



[Go to Product page](#)

Datasheet for ABIN391658

## anti-CYP20A1 antibody (C-Term)

### 3 Images

#### Overview

Quantity:	400 µL
Target:	CYP20A1
Binding Specificity:	AA 364-392, C-Term
Reactivity:	Human
Host:	Rabbit
Clonality:	Polyclonal
Conjugate:	This CYP20A1 antibody is un-conjugated
Application:	Western Blotting (WB), Flow Cytometry (FACS), Immunohistochemistry (Paraffin-embedded Sections) (IHC (p))

#### Product Details

Immunogen:	This CYP20A1 antibody is generated from rabbits immunized with a KLH conjugated synthetic peptide between 364-392 amino acids from the C-terminal region of human CYP20A1.
Clone:	RB17529
Isotype:	Ig Fraction
Purification:	This antibody is prepared by Saturated Ammonium Sulfate (SAS) precipitation followed by dialysis against PBS.

#### Target Details

Target:	CYP20A1
Alternative Name:	CYP20A1 ( <a href="#">CYP20A1 Products</a> )

## Target Details

---

**Background:** CYP20A1 is a member of the cytochrome P450 superfamily of enzymes. The cytochrome P450 proteins are monooxygenases that catalyze many reactions involved in drug metabolism and synthesis of cholesterol, steroids and other lipids. The protein lacks one amino acid of the conserved heme binding site. It also lacks the conserved I-helix motif AGX(D,E)T, suggesting that its substrate may carry its own oxygen.

**Molecular Weight:** 52432

**Gene ID:** 57404

**NCBI Accession:** [NP\\_803882](#)

**UniProt:** [Q6UW02](#)

## Application Details

---

**Application Notes:** WB: 1:1000. IHC-P: 1:50~100. FC: 1:10~50

**Restrictions:** For Research Use only

## Handling

---

**Format:** Liquid

**Buffer:** Purified polyclonal antibody supplied in PBS with 0.09 % (W/V) sodium azide.

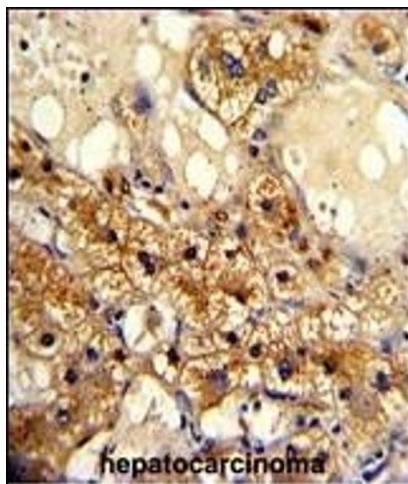
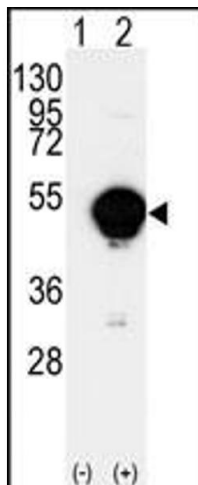
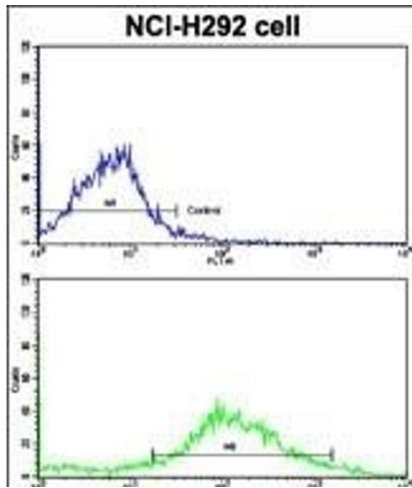
**Preservative:** Sodium azide

**Precaution of Use:** This product contains Sodium azide: a POISONOUS AND HAZARDOUS SUBSTANCE which should be handled by trained staff only.

**Storage:** 4 °C,-20 °C

**Storage Comment:** Maintain refrigerated at 2-8 °C for up to 6 months. For long term storage store at -20 °C in small aliquots to prevent freeze-thaw cycles.

**Expiry Date:** 6 months



### Flow Cytometry

**Image 1.** Flow cytometric analysis of NCI- cells using CYP20A1 Antibody (C-term)(bottom histogram) compared to a negative control cell (top histogram). FITC-conjugated goat-anti-rabbit secondary antibodies were used for the analysis.

### Western Blotting

**Image 2.** Western blot analysis of CYP20A1(arrow) using rabbit polyclonal CYP20A1 Antibody (C-term) (ABIN391658 and ABIN2841569). 293 cell lysates (2 µg/lane) either nontransfected (Lane 1) or transiently transfected with the CYP20A1 gene (Lane 2) (Origene Technologies).

### Immunohistochemistry (Paraffin-embedded Sections)

**Image 3.** Formalin-fixed and paraffin-embedded human hepatocarcinoma with CYP20A1 Antibody (C-term), which was peroxidase-conjugated to the secondary antibody, followed by DAB staining. This data demonstrates the use of this antibody for immunohistochemistry, clinical relevance has not been evaluated.