

Datasheet for ABIN391660
anti-IDH1 antibody (AA 116-143)[Go to Product page](#)

7 Images

Overview

Quantity:	400 µL
Target:	IDH1
Binding Specificity:	AA 116-143
Reactivity:	Human, Mouse
Host:	Rabbit
Clonality:	Polyclonal
Conjugate:	This IDH1 antibody is un-conjugated
Application:	Western Blotting (WB), Flow Cytometry (FACS), Immunofluorescence (IF), Immunohistochemistry (Paraffin-embedded Sections) (IHC (p))

Product Details

Immunogen:	This IDH1 antibody is generated from rabbits immunized with a KLH conjugated synthetic peptide between 116-143 amino acids from the Central region of human IDH1.
Clone:	RB18238
Isotype:	Ig Fraction
Predicted Reactivity:	B, Rat, Sh
Purification:	This antibody is prepared by Saturated Ammonium Sulfate (SAS) precipitation followed by dialysis against PBS.

Target Details

Target:	IDH1
---------	------

Target Details

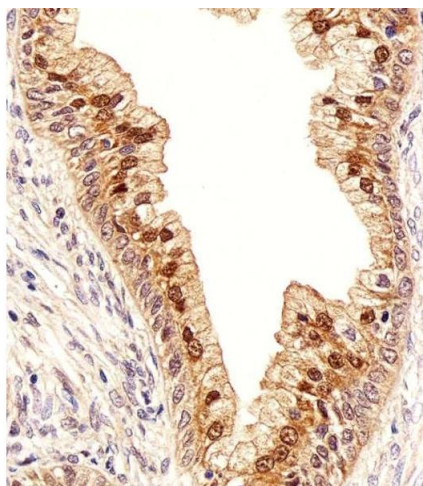
Alternative Name:	IDH1 (IDH1 Products)
Background:	IDH1 belongs to two distinct subclasses. The protein is the NADP(+)-dependent isocitrate dehydrogenase found in the cytoplasm and peroxisomes. This protein contains the PTS-1 peroxisomal targeting signal sequence. The presence of this enzyme in peroxisomes suggests roles in the regeneration of NADPH for intraperoxisomal reductions, such as the conversion of 2, 4-dienoyl-CoAs to 3-enoyl-CoAs, as well as in peroxisomal reactions that consume 2-oxoglutarate, namely the alpha-hydroxylation of phytanic acid. The cytoplasmic enzyme serves a significant role in cytoplasmic NADPH production.
Molecular Weight:	46659
Gene ID:	3417
NCBI Accession:	NP_001269315 , NP_001269316 , NP_005887
UniProt:	O75874
Pathways:	Warburg Effect

Application Details

Application Notes:	IF: 1:10~50. WB: 1:1000. WB: 1:1000. IHC-P: 1:100. IHC-P: 1:50~100. FC: 1:10~50
Restrictions:	For Research Use only

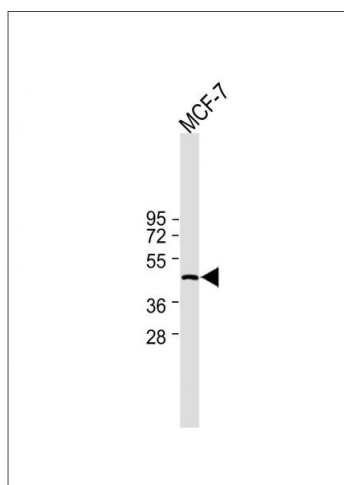
Handling

Format:	Liquid
Buffer:	Purified polyclonal antibody supplied in PBS with 0.09 % (W/V) sodium azide.
Preservative:	Sodium azide
Precaution of Use:	This product contains Sodium azide: a POISONOUS AND HAZARDOUS SUBSTANCE which should be handled by trained staff only.
Storage:	4 °C, -20 °C
Storage Comment:	Maintain refrigerated at 2-8 °C for up to 6 months. For long term storage store at -20 °C in small aliquots to prevent freeze-thaw cycles.
Expiry Date:	6 months



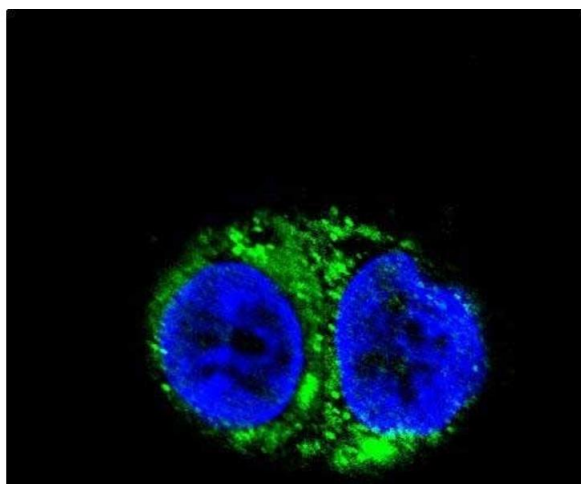
Immunohistochemistry (Paraffin-embedded Sections)

Image 1. Immunohistochemical analysis of paraffin-embedded H. prostate section using IDH1 Antibody (Center) (ABIN391660 and ABIN2841571). (ABIN391660 and ABIN2841571) was diluted at 1:100 dilution. A peroxidase-conjugated goat anti-rabbit IgG at 1:400 dilution was used as the secondary antibody, followed by DAB staining.



Western Blotting

Image 2. All lanes : Anti-IDH1 Antibody (Center) at 1:2000 dilution Lane 1: MCF-7 whole cell lysate Lysates/proteins at 20 µg per lane. Secondary Goat Anti-Mouse IgG/A/M(H/L), Peroxidase conjugated at 1/2000 dilution. Observed band size : 47 kDa Blocking/Dilution buffer: 5 % NFDm/TBST.



Immunofluorescence

Image 3. Confocal immunofluorescent analysis of IDH1 Antibody (Center) (ABIN391660 and ABIN2841571) with HepG2 cell followed by Alexa Fluor 488-conjugated goat anti-rabbit IgG (green). DAPI was used to stain the cell nuclear (blue).

Please check the [product details page](#) for more images. Overall 7 images are available for ABIN391660.