



[Go to Product page](#)

Datasheet for ABIN391663  
**anti-IGHA1 antibody (C-Term)**

4 Images

### Overview

Quantity:	400 µL
Target:	IGHA1
Binding Specificity:	AA 257-286, C-Term
Reactivity:	Human
Host:	Rabbit
Clonality:	Polyclonal
Conjugate:	This IGHA1 antibody is un-conjugated
Application:	Flow Cytometry (FACS), Western Blotting (WB), Immunohistochemistry (Paraffin-embedded Sections) (IHC (p))

### Product Details

Immunogen:	This IGHA1 antibody is generated from rabbits immunized with a KLH conjugated synthetic peptide between 257-286 amino acids from the C-terminal region of human IGHA1.
Clone:	RB18272
Isotype:	Ig Fraction
Purification:	This antibody is prepared by Saturated Ammonium Sulfate (SAS) precipitation followed by dialysis against PBS.

### Target Details

Target:	IGHA1
Alternative Name:	IGHA1 ( <a href="#">IGHA1 Products</a> )

## Target Details

---

Background:	Ig alpha is the major immunoglobulin class in body secretions. The protein may serve both to defend against local infection and to prevent access of foreign antigens to the general immunologic system.
Molecular Weight:	37655
Gene ID:	3493
UniProt:	<a href="#">P01876</a>

## Application Details

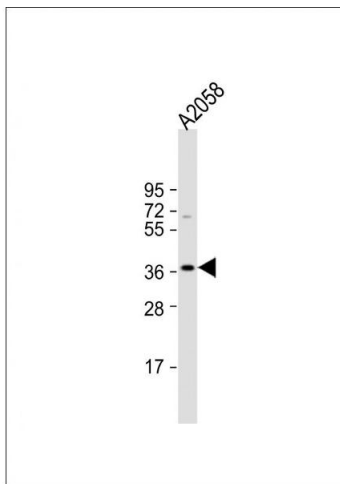
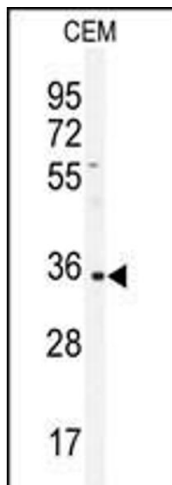
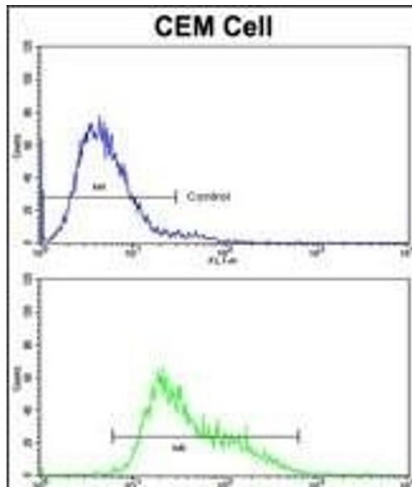
---

Application Notes:	WB: 1:1000. WB: 1:1000. IHC-P: 1:50~100. FC: 1:10~50
Restrictions:	For Research Use only

## Handling

---

Format:	Liquid
Buffer:	Purified polyclonal antibody supplied in PBS with 0.09 % (W/V) sodium azide.
Preservative:	Sodium azide
Precaution of Use:	This product contains Sodium azide: a POISONOUS AND HAZARDOUS SUBSTANCE which should be handled by trained staff only.
Storage:	4 °C,-20 °C
Storage Comment:	Maintain refrigerated at 2-8 °C for up to 6 months. For long term storage store at -20 °C in small aliquots to prevent freeze-thaw cycles.
Expiry Date:	6 months



### Flow Cytometry

**Image 1.** Flow cytometric analysis of CEM cells using IGHA1 Antibody (C-term)(bottom histogram) compared to a negative control cell (top histogram). FITC-conjugated goat-anti-rabbit secondary antibodies were used for the analysis.

### Western Blotting

**Image 2.** Western blot analysis of IGHA1 antibody (C-term) (ABIN391663 and ABIN2841573) in CEM cell line lysates (35 µg/lane). IGHA1 (arrow) was detected using the purified Pab.

### Western Blotting

**Image 3.** Anti-IgA Antibody (C-term) at 1:1000 dilution + whole cell lysate Lysates/proteins at 20 µg per lane. Secondary Goat Anti-Rabbit IgG, (H+L), Peroxidase conjugated at 1/10000 dilution. Predicted band size : 38 kDa Blocking/Dilution buffer: 5 % NFDm/TBST.

Please check the [product details page](#) for more images. Overall 4 images are available for ABIN391663.