

Datasheet for ABIN391665  
**anti-EN2 antibody (C-Term)**[Go to Product page](#)

## 3 Images

## Overview

Quantity:	400 µL
Target:	EN2
Binding Specificity:	AA 243-271, C-Term
Reactivity:	Human, Mouse
Host:	Rabbit
Clonality:	Polyclonal
Conjugate:	This EN2 antibody is un-conjugated
Application:	Western Blotting (WB), Immunofluorescence (IF)

## Product Details

Immunogen:	This EN2 antibody is generated from rabbits immunized with a KLH conjugated synthetic peptide between 243-271 amino acids from the C-terminal region of human EN2.
Clone:	RB18198
Isotype:	Ig Fraction
Predicted Reactivity:	Zf, X, C
Purification:	This antibody is purified through a protein A column, followed by peptide affinity purification.

## Target Details

Target:	EN2
Alternative Name:	EN2 ( <a href="#">EN2 Products</a> )

## Target Details

**Background:** EN2 is thought to have a role in controlling development. In Drosophila, the protein plays an important role during development in segmentation, where it is required for the formation of posterior compartments. Different mutations in the mouse homologs, En1 and En2, produced different developmental defects that frequently are lethal. This protein has been implicated in the control of pattern formation during development of the central nervous system.

**Molecular Weight:** 34211

**Gene ID:** 2020

**NCBI Accession:** [NP\\_001418](#)

**UniProt:** [P19622](#)

## Application Details

**Application Notes:** IF: 1:10~50. WB: 1:1000. WB: 1:1000

**Restrictions:** For Research Use only

## Handling

**Format:** Liquid

**Buffer:** Purified polyclonal antibody supplied in PBS with 0.09 % (W/V) sodium azide.

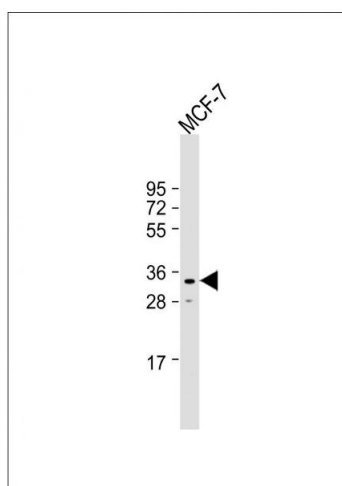
**Preservative:** Sodium azide

**Precaution of Use:** This product contains Sodium azide: a POISONOUS AND HAZARDOUS SUBSTANCE which should be handled by trained staff only.

**Storage:** 4 °C,-20 °C

**Storage Comment:** Maintain refrigerated at 2-8 °C for up to 6 months. For long term storage store at -20 °C in small aliquots to prevent freeze-thaw cycles.

**Expiry Date:** 6 months



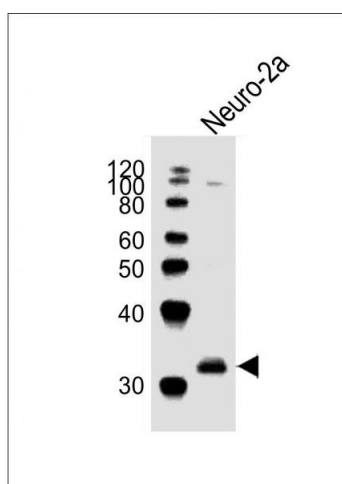
### Western Blotting

**Image 1.** Anti-EN2 Antibody (C-term) at 1:1000 dilution + MCF-7 whole cell lysates Lysates/proteins at 20 µg per lane. Secondary Goat Anti-Rabbit IgG, (H+L), Peroxidase conjugated at 1/10000 dilution. Predicted band size : 34 kDa Blocking/Dilution buffer: 5 % NFDm/TBST.



### Immunofluorescence

**Image 2.** Fluorescent confocal image of HeLa cell stained with EN2 Antibody (C-term) (ABIN391665 and ABIN2841574). HeLa cells were fixed with 4 % PFA (20 min), permeabilized with Triton X-100 (0.1 %, 10 min), then incubated with EN2 primary antibody (1:25, 1 h at 37 °C). For secondary antibody, Alexa Fluor® 488 conjugated donkey anti-rabbit antibody (green) was used (1:400, 50 min at 37 °C). Cytoplasmic actin was counterstained with Alexa Fluor® 555 (red) conjugated Phalloidin (7 units/mL, 1 h at 37 °C). Nuclei were counterstained with DAPI (blue) (10 µg/mL, 10 min). EN2 immunoreactivity is localized to nucleus significantly and Cytoplasm weakly.



### Western Blotting

**Image 3.** Anti-EN2 Antibody (C-term) at 1:1000 dilution + Neuro-2a whole cell lysates Lysates/proteins at 20 µg per lane. Secondary Goat Anti-Rabbit IgG, (H+L), Peroxidase conjugated at 1/10000 dilution Predicted band size : 34 kDa Blocking/Dilution buffer: 5 % NFDm/TBST.