

Datasheet for ABIN391679  
**anti-ALT antibody (N-Term)**[Go to Product page](#)

## 3 Images

## Overview

|                      |  |
|----------------------|--|
| Quantity:            | 400 µL   |
| Target:              | ALT  |
| Binding Specificity: | AA 118-144, N-Term   |
| Reactivity:          | Human, Rat, Mouse  |
| Host:                | Rabbit   |
| Clonality:           | Polyclonal   |
| Conjugate:           | This ALT antibody is un-conjugated   |
| Application:         | Western Blotting (WB), Immunohistochemistry (Paraffin-embedded Sections) (IHC (p)) |

## Product Details

|                       |  |
|-----------------------|--|
| Immunogen:            | This GPT antibody is generated from rabbits immunized with a KLH conjugated synthetic peptide between 118-144 amino acids from the N-terminal region of human GPT. |
| Clone:                | RB20083  |
| Isotype:              | Ig Fraction  |
| Predicted Reactivity: | B  |
| Purification:         | This antibody is prepared by Saturated Ammonium Sulfate (SAS) precipitation followed by dialysis against PBS.  |

## Target Details

|         |     |
|---------|-----|
| Target: | ALT |
|---------|-----|

## Target Details

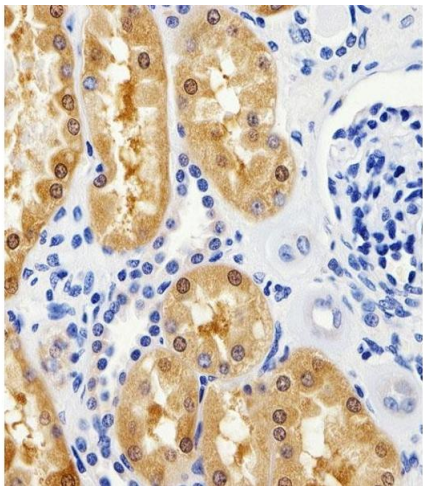
|                   |  |
|-------------------|--|
| Alternative Name: | GPT ( <a href="#">ALT Products</a> )   |
| Background:       | <p>GPT(Glutamate-pyruvate transaminase), also known as alanine aminotransferase, catalyzes the reversible conversion of L-alanine and alpha-ketoglutarate to L-glutamate and pyruvate.</p> <p>This protein has 2 distinct molecular and genetic forms: one cytoplasmic (soluble) (GPT1) and one mitochondrial (GPT2). See ALTQTL1 and ALTQTL2 for information on quantitative trait loci influencing the plasma level of alanine aminotransferase.</p> |
| Molecular Weight: | 54637  |
| Gene ID:          | 2875   |
| NCBI Accession:   | <a href="#">NP_005300</a>  |
| UniProt:          | <a href="#">P24298</a>   |

## Application Details

|                    |  |
|--------------------|--|
| Application Notes: | WB: 1:1000. IHC-P: 1:100. IHC-P: 1:100 |
| Restrictions:      | For Research Use only                  |

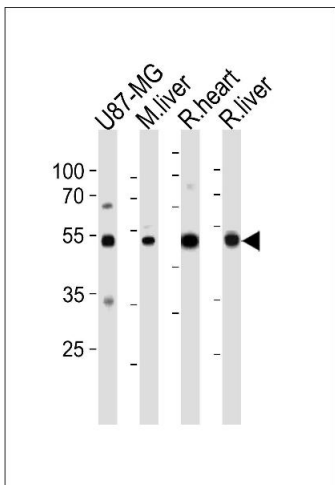
## Handling

|                    |  |
|--------------------|--|
| Format:            | Liquid   |
| Buffer:            | Purified polyclonal antibody supplied in PBS with 0.09 % (W/V) sodium azide.   |
| Preservative:      | Sodium azide   |
| Precaution of Use: | This product contains Sodium azide: a POISONOUS AND HAZARDOUS SUBSTANCE which should be handled by trained staff only.                     |
| Storage:           | 4 °C,-20 °C  |
| Storage Comment:   | Maintain refrigerated at 2-8 °C for up to 6 months. For long term storage store at -20 °C in small aliquots to prevent freeze-thaw cycles. |
| Expiry Date:       | 6 months   |



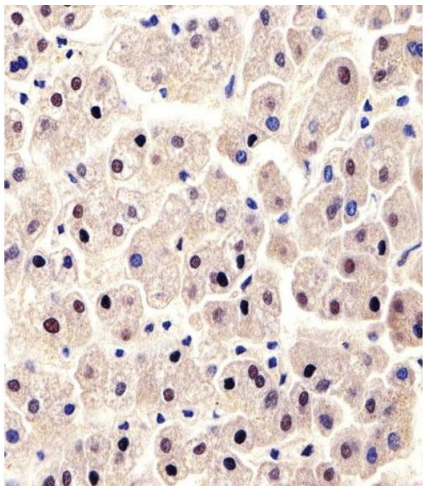
#### Immunohistochemistry (Paraffin-embedded Sections)

**Image 1.** Immunohistochemical analysis of paraffin-embedded H.kidney section using GPT Antibody (N-term ) (ABIN391679 and ABIN2841588). (ABIN391679 and ABIN2841588) was diluted at 1:100 dilution. A peroxidase-conjugated goat anti-rabbit IgG at 1:400 dilution was used as the secondary antibody, followed by DAB staining.



#### Western Blotting

**Image 2.** GPT Antibody (N-term ) (ABIN391679 and ABIN2841588) western blot analysis in U87-MG cell line , mouse liver ,and rat heart and liver tissue lysates (35  $\mu$  g/lane).This demonstrates the GPT antibody detected the GPT protein (arrow).



#### Immunohistochemistry (Paraffin-embedded Sections)

**Image 3.** Immunohistochemical analysis of paraffin-embedded H.liver section using GPT Antibody (N-term ) (ABIN391679 and ABIN2841588). (ABIN391679 and ABIN2841588) was diluted at 1:100 dilution. A peroxidase-conjugated goat anti-rabbit IgG at 1:400 dilution was used as the secondary antibody, followed by DAB staining.