

Datasheet for ABIN391687  
**anti-OPLAH antibody (N-Term)**[Go to Product page](#)

## 3 Images

## Overview

Quantity:	400 µL
Target:	OPLAH
Binding Specificity:	AA 1-30, N-Term
Reactivity:	Human, Mouse
Host:	Rabbit
Clonality:	Polyclonal
Conjugate:	This OPLAH antibody is un-conjugated
Application:	Western Blotting (WB), Immunohistochemistry (Paraffin-embedded Sections) (IHC (p))

## Product Details

Immunogen:	This OPLAH antibody is generated from rabbits immunized with a KLH conjugated synthetic peptide between 1-30 amino acids from the N-terminal region of human OPLAH.
Clone:	RB18531
Isotype:	Ig Fraction
Predicted Reactivity:	Rat
Purification:	This antibody is prepared by Saturated Ammonium Sulfate (SAS) precipitation followed by dialysis against PBS.

## Target Details

Target:	OPLAH
---------	-------

## Target Details

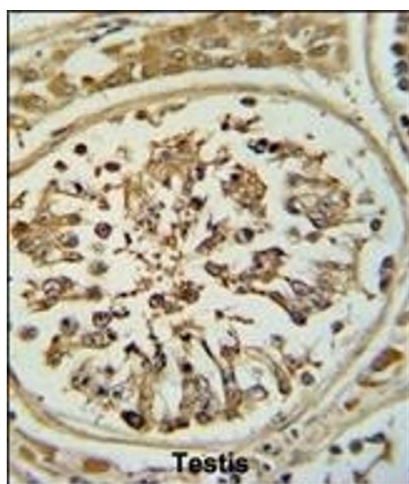
Alternative Name:	OPLAH ( <a href="#">OPLAH Products</a> )
Background:	OPLAH catalyzes the cleavage of 5-oxo-L-proline to form L-glutamate coupled to the hydrolysis of ATP to ADP and inorganic phosphate. $\text{ATP} + 5\text{-oxo-L-proline} + 2 \text{H}_2\text{O} = \text{ADP} + \text{phosphate} + \text{L-glutamate}$ .
Molecular Weight:	137457
Gene ID:	26873
NCBI Accession:	<a href="#">NP_060040</a>
UniProt:	<a href="#">O14841</a>

## Application Details

Application Notes:	WB: 1:1000. WB: 1:1000. IHC-P: 1:50~100
Restrictions:	For Research Use only

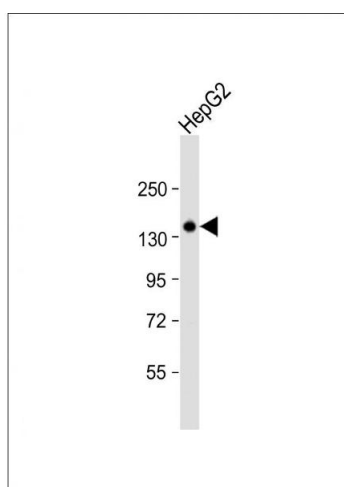
## Handling

Format:	Liquid
Buffer:	Purified polyclonal antibody supplied in PBS with 0.09 % (W/V) sodium azide.
Preservative:	Sodium azide
Precaution of Use:	This product contains Sodium azide: a POISONOUS AND HAZARDOUS SUBSTANCE which should be handled by trained staff only.
Storage:	4 °C,-20 °C
Storage Comment:	Maintain refrigerated at 2-8 °C for up to 6 months. For long term storage store at -20 °C in small aliquots to prevent freeze-thaw cycles.
Expiry Date:	6 months



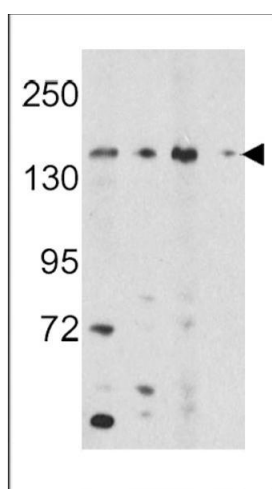
#### Immunohistochemistry (Paraffin-embedded Sections)

**Image 1.** Formalin-fixed and paraffin-embedded human testis tissue reacted with OPLAH Antibody (N-term), which was peroxidase-conjugated to the secondary antibody, followed by DAB staining. This data demonstrates the use of this antibody for immunohistochemistry, clinical relevance has not been evaluated.



#### Western Blotting

**Image 2.** Anti-OPLAH Antibody (N-term) at 1:1000 dilution + HepG2 whole cell lysate Lysates/proteins at 20 µg per lane. Secondary Goat Anti-Rabbit IgG, (H+L), Peroxidase conjugated at 1/10000 dilution. Predicted band size : 137 kDa Blocking/Dilution buffer: 5 % NFDm/TBST.



#### Western Blotting

**Image 3.** Western blot analysis of OPLAH Antibody (N-term) (ABIN391687 and ABIN2841592) in K562, HepG2 cell line lysates and mouse bladder, liver tissue lysates (35 µg/lane). OPLAH (arrow) was detected using the purified Pab.