



Datasheet for ABIN391690
anti-IGFALS antibody (AA 308-335)



[Go to Product page](#)

3 Images

Overview

Quantity:	400 µL
Target:	IGFALS
Binding Specificity:	AA 308-335
Reactivity:	Human, Mouse
Host:	Rabbit
Clonality:	Polyclonal
Conjugate:	This IGFALS antibody is un-conjugated
Application:	Western Blotting (WB), Immunohistochemistry (Paraffin-embedded Sections) (IHC (p)), Flow Cytometry (FACS)

Product Details

Immunogen:	This IGFALS antibody is generated from rabbits immunized with a KLH conjugated synthetic peptide between 308-335 amino acids from the Central region of human IGFALS.
Clone:	RB18270
Isotype:	Ig Fraction
Purification:	This antibody is prepared by Saturated Ammonium Sulfate (SAS) precipitation followed by dialysis against PBS.

Target Details

Target:	IGFALS
Alternative Name:	IGFALS (IGFALS Products)

Target Details

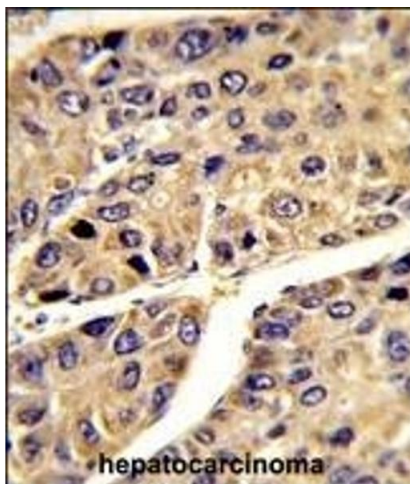
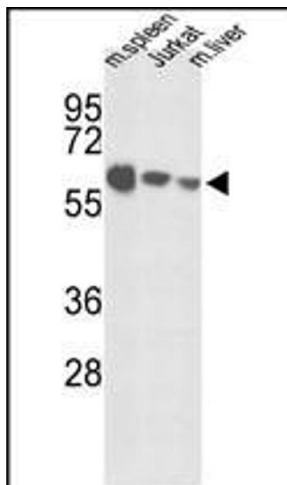
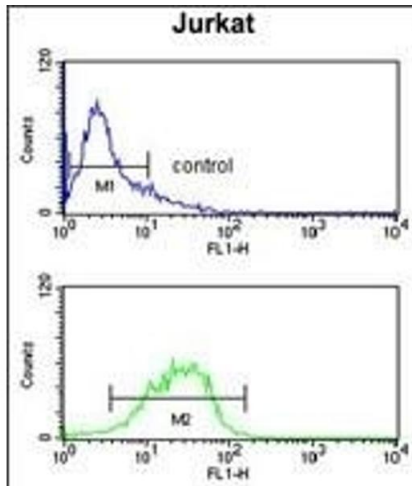
Background:	IGFALS is a serum protein that binds insulin-like growth factors, increasing their half-life and their vascular localization. Production of the protein, which contains twenty leucine-rich repeats, is stimulated by growth hormone. Defects in this protein are a cause of acid-labile subunit deficiency, which manifests itself in a delayed and slow puberty.
Molecular Weight:	66035
Gene ID:	3483
NCBI Accession:	NP_001139478 , NP_004961
UniProt:	P35858

Application Details

Application Notes:	WB: 1:1000. IHC-P: 1:50~100. FC: 1:10~50
Restrictions:	For Research Use only

Handling

Format:	Liquid
Buffer:	Purified polyclonal antibody supplied in PBS with 0.09 % (W/V) sodium azide.
Preservative:	Sodium azide
Precaution of Use:	This product contains Sodium azide: a POISONOUS AND HAZARDOUS SUBSTANCE which should be handled by trained staff only.
Storage:	4 °C, -20 °C
Storage Comment:	Maintain refrigerated at 2-8 °C for up to 6 months. For long term storage store at -20 °C in small aliquots to prevent freeze-thaw cycles.
Expiry Date:	6 months



Flow Cytometry

Image 1. IGFALS Antibody (Center) (ABIN391690 and ABIN2841595) flow cytometry analysis of Jurkat cells (bottom histogram) compared to a negative control cell (top histogram). FITC-conjugated goat-anti-rabbit secondary antibodies were used for the analysis.

Western Blotting

Image 2. Western blot analysis of IGFALS Antibody (Center) (ABIN391690 and ABIN2841595) in mouse spleen tissue, Jurkat cell line and mouse liver tissue lysates (35 µg/lane). IGFALS (arrow) was detected using the purified Pab.

Immunohistochemistry (Paraffin-embedded Sections)

Image 3. Formalin-fixed and paraffin-embedded human hepatocarcinoma reacted with IGFALS Antibody (Center), which was peroxidase-conjugated to the secondary antibody, followed by DAB staining. This data demonstrates the use of this antibody for immunohistochemistry, clinical relevance has not been evaluated.