



[Go to Product page](#)

Datasheet for ABIN391695
anti-PCM1 antibody (C-Term)

3 Images

Overview

Quantity:	400 µL
Target:	PCM1
Binding Specificity:	AA 1816-1845, C-Term
Reactivity:	Human
Host:	Rabbit
Clonality:	Polyclonal
Conjugate:	This PCM1 antibody is un-conjugated
Application:	Western Blotting (WB), Flow Cytometry (FACS), Immunohistochemistry (Paraffin-embedded Sections) (IHC (p))

Product Details

Immunogen:	This PCM-1 antibody is generated from rabbits immunized with a KLH conjugated synthetic peptide between 1816-1845 amino acids from the C-terminal region of human PCM-1.
Clone:	RB18330
Isotype:	Ig Fraction
Purification:	This antibody is purified through a protein A column, followed by peptide affinity purification.

Target Details

Target:	PCM1
Alternative Name:	PCM-1 (PCM1 Products)

Target Details

Background: PCM-1 is required for centrosome assembly and function. This protein is essential for the correct localization of several centrosomal proteins including CEP250, CETN3, PCNT and NEK2. The protein is required to anchor microtubules to the centrosome.

Molecular Weight: 228544

Gene ID: 5108

NCBI Accession: [NP_006188](#)

UniProt: [Q15154](#)

Pathways: [Stem Cell Maintenance](#), [M Phase](#), [Maintenance of Protein Location](#)

Application Details

Application Notes: WB: 1:500-2000. IHC-P: 1:50~100. FC: 1:10~50

Restrictions: For Research Use only

Handling

Format: Liquid

Buffer: Purified polyclonal antibody supplied in PBS with 0.09 % (W/V) sodium azide.

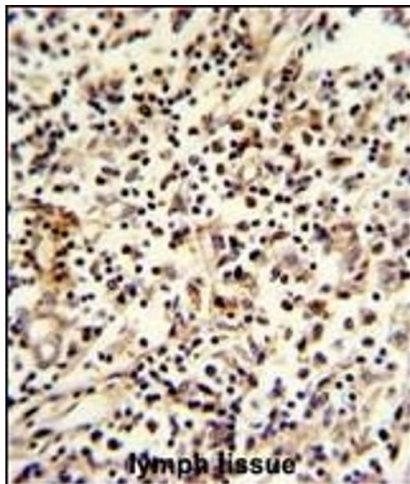
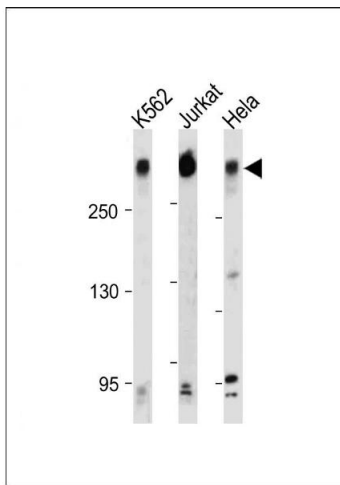
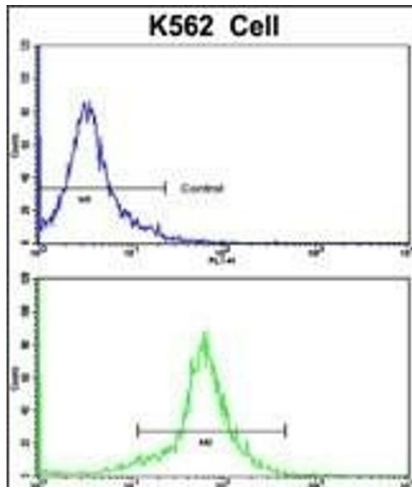
Preservative: Sodium azide

Precaution of Use: This product contains Sodium azide: a POISONOUS AND HAZARDOUS SUBSTANCE which should be handled by trained staff only.

Storage: 4 °C,-20 °C

Storage Comment: Maintain refrigerated at 2-8 °C for up to 6 months. For long term storage store at -20 °C in small aliquots to prevent freeze-thaw cycles.

Expiry Date: 6 months



Flow Cytometry

Image 1. Flow cytometric analysis of K562 cells using PCM-1 Antibody (C-term)(bottom histogram) compared to a negative control cell (top histogram). FITC-conjugated goat-anti-rabbit secondary antibodies were used for the analysis.

Western Blotting

Image 2. All lanes : Anti-PCM-1 Antibody (C-term) at 1:500-2000 dilution Lane 1: K562 whole cell lysate Lane 2: Jurkat whole cell lysate Lane 3: HeLa whole cell lysate Lysates/proteins at 20 µg per lane. Secondary Goat Anti-Rabbit IgG, (H+L), Peroxidase conjugated at 1/10000 dilution. Predicted band size : 229 kDa Blocking/Dilution buffer: 5 % NFDN/TBST.

Immunohistochemistry (Paraffin-embedded Sections)

Image 3. Formalin-fixed and paraffin-embedded human lymph reacted with PCM-1 Antibody (C-term), which was peroxidase-conjugated to the secondary antibody, followed by DAB staining. This data demonstrates the use of this antibody for immunohistochemistry, clinical relevance has not been evaluated.