

Datasheet for ABIN391701

anti-Dermatopontin antibody (AA 102-128)



[Go to Product page](#)

4 Images

Overview

Quantity:	400 µL
Target:	Dermatopontin (DPT)
Binding Specificity:	AA 102-128
Reactivity:	Human
Host:	Rabbit
Clonality:	Polyclonal
Conjugate:	This Dermatopontin antibody is un-conjugated
Application:	Western Blotting (WB), Immunohistochemistry (Paraffin-embedded Sections) (IHC (p)), Flow Cytometry (FACS), Immunofluorescence (IF)

Product Details

Immunogen:	This DPT antibody is generated from rabbits immunized with a KLH conjugated synthetic peptide between 102-128 amino acids from the Central region of human DPT.
Clone:	RB17950
Isotype:	Ig Fraction
Predicted Reactivity:	B, M, Pig
Purification:	This antibody is prepared by Saturated Ammonium Sulfate (SAS) precipitation followed by dialysis against PBS.

Target Details

Target:	Dermatopontin (DPT)
---------	---------------------

Target Details

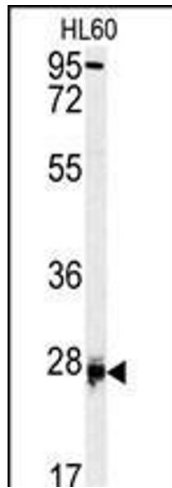
Alternative Name:	DPT (DPT Products)
Background:	DPT is an extracellular matrix protein with possible functions in cell-matrix interactions and matrix assembly. This protein is found in various tissues and many of its tyrosine residues are sulphated. The protein is postulated to modify the behavior of TGF-beta through interaction with decorin.
Molecular Weight:	24005
Gene ID:	1805
NCBI Accession:	NP_001928
UniProt:	Q07507

Application Details

Application Notes:	IF: 1:10~50. WB: 1:1000. IHC-P: 1:50~100. FC: 1:10~50
Restrictions:	For Research Use only

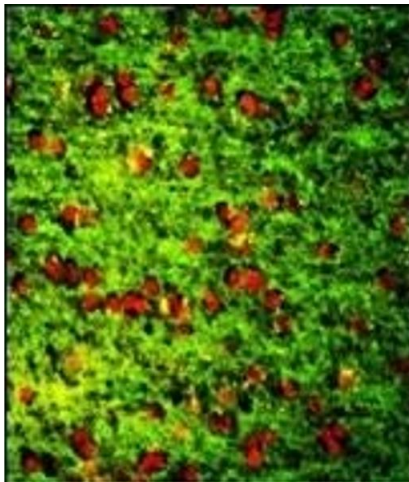
Handling

Format:	Liquid
Buffer:	Purified polyclonal antibody supplied in PBS with 0.09 % (W/V) sodium azide.
Preservative:	Sodium azide
Precaution of Use:	This product contains Sodium azide: a POISONOUS AND HAZARDOUS SUBSTANCE which should be handled by trained staff only.
Storage:	4 °C,-20 °C
Storage Comment:	Maintain refrigerated at 2-8 °C for up to 6 months. For long term storage store at -20 °C in small aliquots to prevent freeze-thaw cycles.
Expiry Date:	6 months



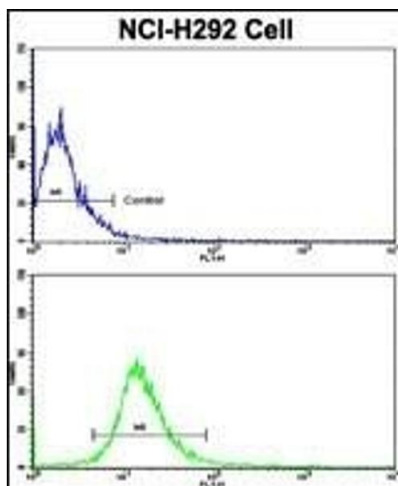
Western Blotting

Image 1. Western blot analysis of DPT antibody (Center) (ABIN391701 and ABIN2841600) in HL60 cell line lysates (35 µg/lane). DPT (arrow) was detected using the purified Pab.



Immunofluorescence

Image 2. Immunofluorescence analysis of DPT Antibody (Center) with paraffin-embedded human brain tissue. 0.05 mg/mL primary antibody was followed by FITC-conjugated goat anti-rabbit IgG (whole molecule). FITC emits green fluorescence. Red counterstaining is PI.



Flow Cytometry

Image 3. Flow cytometric analysis of NCI- cells using DPT Antibody (Center)(bottom histogram) compared to a negative control cell (top histogram). FITC-conjugated goat-anti-rabbit secondary antibodies were used for the analysis.

Please check the [product details page](#) for more images. Overall 4 images are available for ABIN391701.