

Datasheet for ABIN391713
anti-GHRHR antibody (C-Term)[Go to Product page](#)

1 Image

Overview

Quantity:	400 µL
Target:	GHRHR
Binding Specificity:	AA 367-397, C-Term
Reactivity:	Human
Host:	Rabbit
Clonality:	Polyclonal
Conjugate:	This GHRHR antibody is un-conjugated
Application:	Western Blotting (WB)

Product Details

Immunogen:	This GHRHR antibody is generated from rabbits immunized with a KLH conjugated synthetic peptide between 367-397 amino acids from the C-terminal region of human GHRHR.
Clone:	RB18122
Isotype:	Ig Fraction
Purification:	This antibody is prepared by Saturated Ammonium Sulfate (SAS) precipitation followed by dialysis against PBS.

Target Details

Target:	GHRHR
Alternative Name:	GHRHR (GHRHR Products)

Target Details

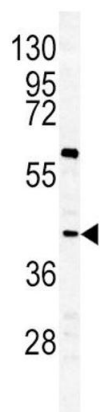
Background:	GHRHR is a receptor for growth hormone-releasing hormone. Binding of this hormone to the receptor leads to synthesis and release of growth hormone. Mutations in GHRHR gene have been associated with isolated growth hormone deficiency (IGHD), also known as Dwarfism of Sindh, a disorder characterized by short stature.
Molecular Weight:	47402
Gene ID:	2692
NCBI Accession:	NP_000814
UniProt:	Q02643
Pathways:	Intracellular Steroid Hormone Receptor Signaling Pathway , Hormone Transport , Regulation of Intracellular Steroid Hormone Receptor Signaling , cAMP Metabolic Process

Application Details

Application Notes:	WB: 1:1000
Restrictions:	For Research Use only

Handling

Format:	Liquid
Buffer:	Purified polyclonal antibody supplied in PBS with 0.09 % (W/V) sodium azide.
Preservative:	Sodium azide
Precaution of Use:	This product contains Sodium azide: a POISONOUS AND HAZARDOUS SUBSTANCE which should be handled by trained staff only.
Storage:	4 °C, -20 °C
Storage Comment:	Maintain refrigerated at 2-8 °C for up to 6 months. For long term storage store at -20 °C in small aliquots to prevent freeze-thaw cycles.
Expiry Date:	6 months



Western Blotting

Image 1. Western blot analysis of GHRHR antibody (C-term) (ABIN391713 and ABIN2841604) in K562 cell line lysates (35 µg/lane). GHRHR (arrow) was detected using the purified Pab.