



[Go to Product page](#)

Datasheet for ABIN391730

## anti-MAPK11 antibody (C-Term)

### 2 Images

#### Overview

Quantity:	400 µL
Target:	MAPK11
Binding Specificity:	AA 334-359, C-Term
Reactivity:	Human, Mouse
Host:	Rabbit
Clonality:	Polyclonal
Conjugate:	This MAPK11 antibody is un-conjugated
Application:	Western Blotting (WB)

#### Product Details

Immunogen:	This MAPK11 antibody is generated from rabbits immunized with a KLH conjugated synthetic peptide between 334-359 amino acids from the C-terminal region of human MAPK11.
Clone:	RB6825
Isotype:	Ig Fraction
Purification:	This antibody is prepared by Saturated Ammonium Sulfate (SAS) precipitation followed by dialysis against PBS.

#### Target Details

Target:	MAPK11
Alternative Name:	P38beta ( <a href="#">MAPK11 Products</a> )

## Target Details

---

**Background:** p38 beta is a member of the MAP kinase subfamily of Ser/Thr protein kinases. MAP kinases act as an integration point for multiple biochemical signals, and are involved in a wide variety of cellular processes such as proliferation, differentiation, transcription regulation and development. This kinase is closely related to p38 MAP kinase, both of which can be activated by changes in osmolarity of the extracellular environment, proinflammatory cytokines and cellular stress. This protein preferentially phosphorylates transcription factor ATF2. It is activated by phosphorylation on threonine and tyrosine by MKK6, and inhibited by pyridinyl-imidazole related compounds. Highest levels of expression are found in the brain and heart, with additional expression in the placenta, lung, liver, skeletal muscle, kidney and pancreas.

**Molecular Weight:** 41357

**NCBI Accession:** [NP\\_002742](#)

**UniProt:** [Q15759](#)

**Pathways:** [MAPK Signaling](#), [Neurotrophin Signaling Pathway](#), [Activation of Innate immune Response](#), [Response to Water Deprivation](#), [Regulation of Muscle Cell Differentiation](#), [ER-Nucleus Signaling](#), [Hepatitis C](#), [Toll-Like Receptors Cascades](#), [Signaling Events mediated by VEGFR1 and VEGFR2](#), [Thromboxane A2 Receptor Signaling](#), [BCR Signaling](#), [S100 Proteins](#)

## Application Details

---

**Application Notes:** WB: 1:1000. WB: 1:1000

**Restrictions:** For Research Use only

## Handling

---

**Format:** Liquid

**Buffer:** Purified polyclonal antibody supplied in PBS with 0.09 % (W/V) sodium azide.

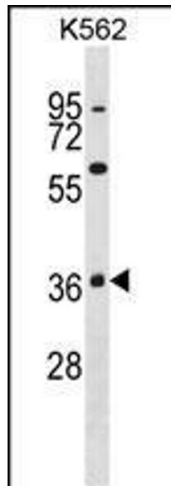
**Preservative:** Sodium azide

**Precaution of Use:** This product contains Sodium azide: a POISONOUS AND HAZARDOUS SUBSTANCE which should be handled by trained staff only.

**Storage:** 4 °C,-20 °C

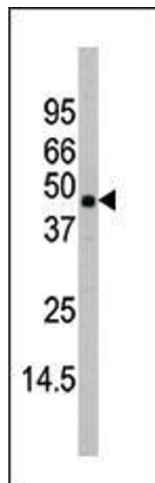
**Storage Comment:** Maintain refrigerated at 2-8 °C for up to 6 months. For long term storage store at -20 °C.

**Expiry Date:** 6 months



#### Western Blotting

**Image 1.** P38beta Antibody (C-term) (ABIN391730 and ABIN2837972) western blot analysis in K562 cell line lysates (35 µg/lane). This demonstrates the P38beta antibody detected the P38beta protein (arrow).



#### Western Blotting

**Image 2.** Western blot analysis of anti-P38beta Antibody (C-term) (ABIN391730 and ABIN2837972) in mouse heart tissue lysates (35 µg/lane). P38beta (arrow) was detected using the purified Pab.