



[Go to Product page](#)

Datasheet for ABIN391762
anti-CDKL1 antibody (C-Term)

4 Images

Overview

Quantity:	400 µL
Target:	CDKL1
Binding Specificity:	AA 285-316, C-Term
Reactivity:	Human, Mouse
Host:	Rabbit
Clonality:	Polyclonal
Conjugate:	This CDKL1 antibody is un-conjugated
Application:	Western Blotting (WB), Immunohistochemistry (Paraffin-embedded Sections) (IHC (p))

Product Details

Immunogen:	This CDKL1 antibody is generated from rabbits immunized with a KLH conjugated synthetic peptide between 285-316 amino acids from the C-terminal region of human CDKL1.
Clone:	RB3517
Isotype:	Ig Fraction
Purification:	This antibody is purified through a protein A column, followed by peptide affinity purification.

Target Details

Target:	CDKL1
Alternative Name:	CDKL1 (CDKL1 Products)
Background:	This gene product is a member of a large family of CDC2-related serine/threonine protein

Target Details

kinases. It accumulates primarily in the nucleus. Alternative splice variants encoding different protein isoforms have been described, but their full-length nature has not been determined.

Molecular Weight: 41803

Gene ID: 8814

NCBI Accession: [NP_004187](#)

UniProt: [Q00532](#)

Application Details

Application Notes: WB: 1:1000. WB: 1:1000. WB: 1:1000. IHC-P: 1:50~100

Restrictions: For Research Use only

Handling

Format: Liquid

Buffer: Purified polyclonal antibody supplied in PBS with 0.09 % (W/V) sodium azide.

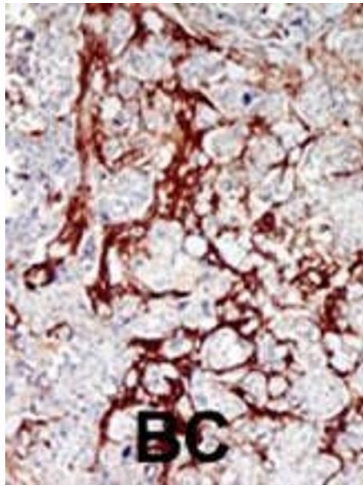
Preservative: Sodium azide

Precaution of Use: This product contains Sodium azide: a POISONOUS AND HAZARDOUS SUBSTANCE which should be handled by trained staff only.

Storage: 4 °C,-20 °C

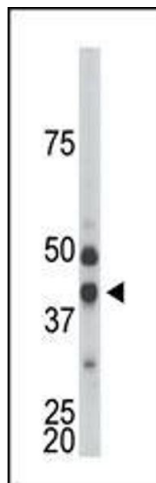
Storage Comment: Maintain refrigerated at 2-8 °C for up to 6 months. For long term storage store at -20 °C in small aliquots to prevent freeze-thaw cycles.

Expiry Date: 6 months



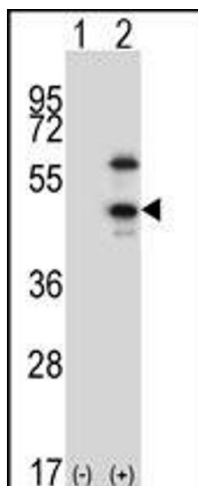
Immunohistochemistry (Paraffin-embedded Sections)

Image 1. Formalin-fixed and paraffin-embedded human cancer tissue reacted with the primary antibody, which was peroxidase-conjugated to the secondary antibody, followed by DAB staining. This data demonstrates the use of this antibody for immunohistochemistry, clinical relevance has not been evaluated. BC = breast carcinoma, HC = hepatocarcinoma.



Western Blotting

Image 2. The anti-CDKL1 Pab (ABIN391762 and ABIN2841627) is used in Western blot to detect CDKL1 in mouse kidney tissue lysate.



Western Blotting

Image 3. Western blot analysis of CDKL1 (arrow) using rabbit polyclonal CDKL1 Antibody (ABIN391762 and ABIN2841627). 293 cell lysates (2 µg/lane) either nontransfected (Lane 1) or transiently transfected (Lane 2) with the CDKL1 gene.

Please check the [product details page](#) for more images. Overall 4 images are available for ABIN391762.