

Datasheet for ABIN391766  
**anti-CLK2 antibody (N-Term)**[Go to Product page](#)

1 Image

2 Publications

## Overview

Quantity:	400 µL
Target:	CLK2
Binding Specificity:	AA 1-30, N-Term
Reactivity:	Human
Host:	Rabbit
Clonality:	Polyclonal
Conjugate:	This CLK2 antibody is un-conjugated
Application:	Western Blotting (WB)

## Product Details

Immunogen:	This CLK2 antibody is generated from rabbits immunized with a KLH conjugated synthetic peptide between 1-30 amino acids from the N-terminal region of human CLK2.
Clone:	RB3205
Isotype:	Ig Fraction
Predicted Reactivity:	M
Purification:	This antibody is prepared by Saturated Ammonium Sulfate (SAS) precipitation followed by dialysis against PBS.

## Target Details

Target:	CLK2
---------	------

## Target Details

Alternative Name:	CLK2 ( <a href="#">CLK2 Products</a> )
Background:	This gene encodes a member of the CLK family of dual specificity protein kinases. CLK family members have shown to interact with, and phosphorylate, serine- and arginine-rich (SR) proteins of the spliceosomal complex, which is a part of the regulatory mechanism that enables the SR proteins to control RNA splicing. This protein kinase is involved in the regulation of several cellular processes and may serve as a link between cell cycle progression, apoptosis, and telomere length regulation.
Molecular Weight:	60090
Gene ID:	1196
NCBI Accession:	<a href="#">NP_003984</a>
UniProt:	<a href="#">P49760</a>
Pathways:	<a href="#">Regulation of Carbohydrate Metabolic Process</a>

## Application Details

Application Notes:	WB: 1:1000
Restrictions:	For Research Use only

## Handling

Format:	Liquid
Buffer:	Purified polyclonal antibody supplied in PBS with 0.09 % (W/V) sodium azide.
Preservative:	Sodium azide
Precaution of Use:	This product contains Sodium azide: a POISONOUS AND HAZARDOUS SUBSTANCE which should be handled by trained staff only.
Storage:	4 °C,-20 °C
Storage Comment:	Maintain refrigerated at 2-8 °C for up to 6 months. For long term storage store at -20 °C in small aliquots to prevent freeze-thaw cycles.
Expiry Date:	6 months

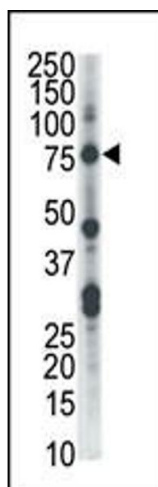
## Publications

Product cited in:	Lin, Liu, Sun, Yuan, Zhang, Chen: "Establishment and characterization of a tamoxifen-mediated
-------------------	---

reversible immortalized mouse dental papilla cell line." in: **In vitro cellular & developmental biology. Animal**, Vol. 49, Issue 2, pp. 114-21, (2013) ([PubMed](#)).

Kaushik, Arias, Kwon, Lopez, Athonvarangkul, Sahu, Schwartz, Pessin, Singh: "Loss of autophagy in hypothalamic POMC neurons impairs lipolysis." in: **EMBO reports**, Vol. 13, Issue 3, pp. 258-65, (2012) ([PubMed](#)).

## Images



### Western Blotting

**Image 1.** Western blot analysis of anti-CLK2 Pab (ABIN391766 and ABIN2841630) in HL-60 cell lysate. CLK2 (arrow) was detected using purified Pab. Secondary HRP-anti-rabbit was used for signal visualization with chemiluminescence.