



[Go to Product page](#)

Datasheet for ABIN391777

anti-HIPK2 antibody (AA 437-468)

2 Images

Overview

Quantity:	400 µL
Target:	HIPK2
Binding Specificity:	AA 437-468
Reactivity:	Human
Host:	Rabbit
Clonality:	Polyclonal
Conjugate:	This HIPK2 antibody is un-conjugated
Application:	Western Blotting (WB), Immunohistochemistry (Paraffin-embedded Sections) (IHC (p))

Product Details

Immunogen:	This HIPK2 antibody is generated from rabbits immunized with a KLH conjugated synthetic peptide between 437-468 amino acids from the center region of human HIPK2.
Clone:	RB10364
Isotype:	Ig Fraction
Predicted Reactivity:	M
Purification:	This antibody is purified through a protein A column, followed by peptide affinity purification.

Target Details

Target:	HIPK2
Alternative Name:	HIPK2 (HIPK2 Products)

Target Details

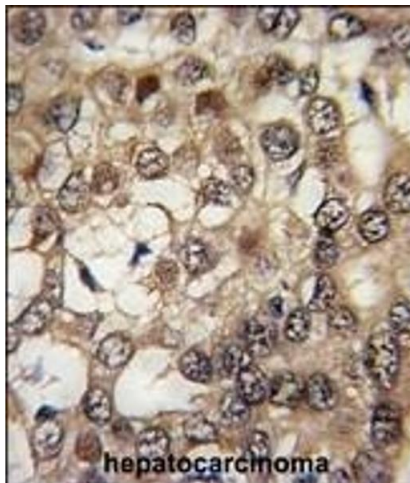
Background:	HIPK2, a member of the KIPK subfamily of Ser/Thr protein kinases, phosphorylates homeodomain transcription factors and may play a role as a corepressor for homeodomain transcription factors. This nuclear protein has been shown to interact with TRADD. It is highly expressed in neuronal tissues, heart and kidney, and weakly expressed in a ubiquitous way. HIPK2 is a target for sumoylation, and when conjugated it is directed to nuclear speckles.
Molecular Weight:	130966
Gene ID:	28996
NCBI Accession:	NP_001106710 , NP_073577
UniProt:	Q9H2X6
Pathways:	Cell Division Cycle

Application Details

Application Notes:	WB: 1:1000. IHC-P: 1:10~50
Restrictions:	For Research Use only

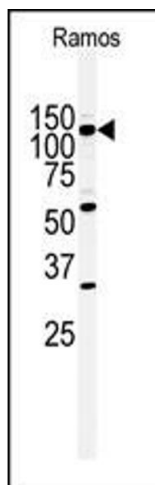
Handling

Format:	Liquid
Buffer:	Purified polyclonal antibody supplied in PBS with 0.09 % (W/V) sodium azide.
Preservative:	Sodium azide
Precaution of Use:	This product contains Sodium azide: a POISONOUS AND HAZARDOUS SUBSTANCE which should be handled by trained staff only.
Storage:	4 °C, -20 °C
Storage Comment:	Maintain refrigerated at 2-8 °C for up to 6 months. For long term storage store at -20 °C in small aliquots to prevent freeze-thaw cycles.
Expiry Date:	6 months



Immunohistochemistry (Paraffin-embedded Sections)

Image 1. Formalin-fixed and paraffin-embedded human hepatocarcinoma tissue reacted with HIPK2 Antibody (Center) (ABIN391777 and ABIN2841636) , which was peroxidase-conjugated to the secondary antibody, followed by DAB staining. This data demonstrates the use of this antibody for immunohistochemistry, clinical relevance has not been evaluated.



Western Blotting

Image 2. Western blot analysis of anti-HIPK2 Antibody (Center) (ABIN391777 and ABIN2841636) in Ramos cell line lysates (35 µg/lane). HIPK2(arrow) was detected using the purified Pab.