

Datasheet for ABIN391794

anti-SRPK1 antibody (N-Term)**3** Images[Go to Product page](#)

Overview

Quantity:	400 µL
Target:	SRPK1
Binding Specificity:	AA 1-30, N-Term
Reactivity:	Human
Host:	Rabbit
Clonality:	Polyclonal
Conjugate:	This SRPK1 antibody is un-conjugated
Application:	Western Blotting (WB), Flow Cytometry (FACS), Immunohistochemistry (Paraffin-embedded Sections) (IHC (p))

Product Details

Immunogen:	This SRPK1 antibody is generated from rabbits immunized with a KLH conjugated synthetic peptide between 1-30 amino acids from the N-terminal region of human SRPK1.
Clone:	RB3355
Isotype:	Ig Fraction
Purification:	This antibody is prepared by Saturated Ammonium Sulfate (SAS) precipitation followed by dialysis against PBS.

Target Details

Target:	SRPK1
Alternative Name:	SRPK1 (SRPK1 Products)

Target Details

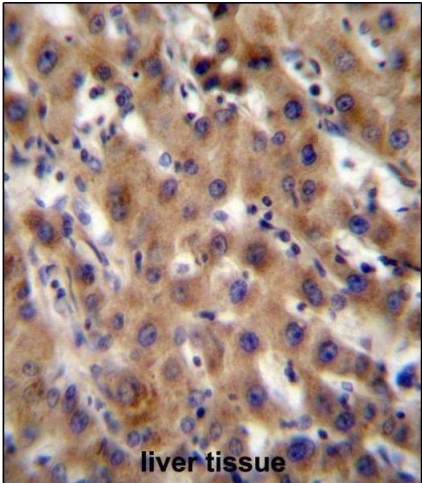
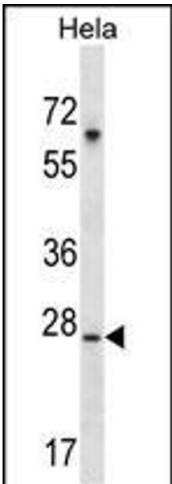
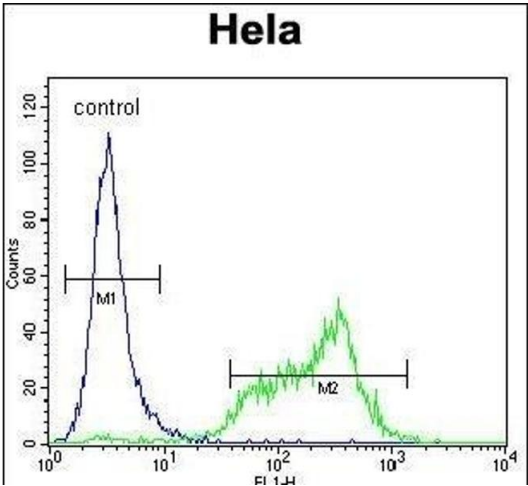
Background:	This gene encodes a serine/arginine protein kinase specific for the SR (serine/arginine-rich domain) family of splicing factors. The protein localizes to the nucleus and the cytoplasm. It is thought to play a role in regulation of both constitutive and alternative splicing by regulating intracellular localization of splicing factors. A second alternatively spliced transcript variant for this gene has been described, but its full length nature has not been determined.
Molecular Weight:	74325
Gene ID:	6732
NCBI Accession:	NP_003128
UniProt:	Q96SB4
Pathways:	Toll-Like Receptors Cascades

Application Details

Application Notes:	WB: 1:1000. IHC-P: 1:10~50. FC: 1:10~50
Restrictions:	For Research Use only

Handling

Format:	Liquid
Buffer:	Purified polyclonal antibody supplied in PBS with 0.09 % (W/V) sodium azide.
Preservative:	Sodium azide
Precaution of Use:	This product contains Sodium azide: a POISONOUS AND HAZARDOUS SUBSTANCE which should be handled by trained staff only.
Storage:	4 °C, -20 °C
Storage Comment:	Maintain refrigerated at 2-8 °C for up to 6 months. For long term storage store at -20 °C in small aliquots to prevent freeze-thaw cycles.
Expiry Date:	6 months



Flow Cytometry

Image 1. SRPK1 Antibody (N-term) (ABIN391794 and ABIN2841649) flow cytometric analysis of Hela cells (right histogram) compared to a negative control cell (left histogram). FITC-conjugated goat-anti-rabbit secondary antibodies were used for the analysis.

Western Blotting

Image 2. SRPK1 Antibody (M1) (ABIN391794 and ABIN2841649) western blot analysis in Hela cell line lysates (35 μ g/lane). This demonstrates the SRPK1 antibody detected the SRPK1 protein (arrow).

Immunohistochemistry (Paraffin-embedded Sections)

Image 3. SRPK1 Antibody (N-term) (ABIN391794 and ABIN2841649) immunohistochemistry analysis in formalin fixed and paraffin embedded human liver tissue followed by peroxidase conjugation of the secondary antibody and DAB staining. This data demonstrates the use of SRPK1 Antibody (N-term) for immunohistochemistry. Clinical relevance has not been evaluated.