



[Go to Product page](#)

Datasheet for ABIN391806  
**anti-AARS2 antibody (AA 366-394)**

3 Images

### Overview

Quantity:	400 µL
Target:	AARS2
Binding Specificity:	AA 366-394
Reactivity:	Human
Host:	Rabbit
Clonality:	Polyclonal
Conjugate:	This AARS2 antibody is un-conjugated
Application:	Western Blotting (WB), Immunohistochemistry (Paraffin-embedded Sections) (IHC (p)), Flow Cytometry (FACS)

### Product Details

Immunogen:	This AARS2 antibody is generated from rabbits immunized with a KLH conjugated synthetic peptide between 366-394 amino acids from the Central region of human AARS2.
Clone:	RB14632
Isotype:	Ig Fraction
Purification:	This antibody is prepared by Saturated Ammonium Sulfate (SAS) precipitation followed by dialysis against PBS.

### Target Details

Target:	AARS2
Alternative Name:	AARS2 ( <a href="#">AARS2 Products</a> )

## Target Details

---

Background:	Alanyl-tRNA synthetase 2 (AARS2) is an enzyme that catalyzes the chemical reaction: ATP + L-alanine + tRNAAla <--> AMP + diphosphate + L-alanyl-tRNAAla. This enzyme participates in alanine and aspartate metabolism and aminoacyl-tRNA biosynthesis.
Molecular Weight:	107340
Gene ID:	57505
NCBI Accession:	<a href="#">NP_065796</a>
UniProt:	<a href="#">Q5JTZ9</a>

## Application Details

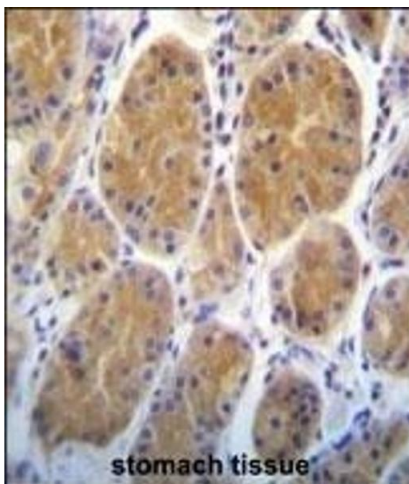
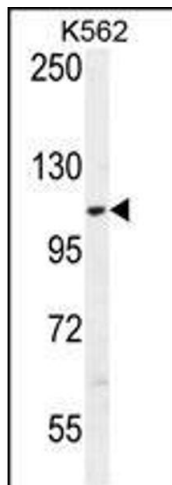
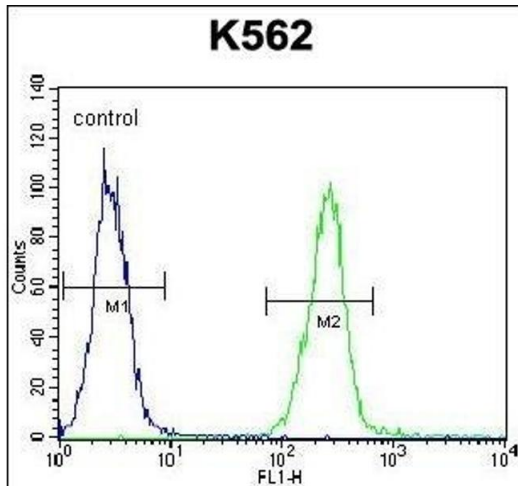
---

Application Notes:	WB: 1:1000. IHC-P: 1:10~50. FC: 1:10~50
Restrictions:	For Research Use only

## Handling

---

Format:	Liquid
Buffer:	Purified polyclonal antibody supplied in PBS with 0.09 % (W/V) sodium azide.
Preservative:	Sodium azide
Precaution of Use:	This product contains Sodium azide: a POISONOUS AND HAZARDOUS SUBSTANCE which should be handled by trained staff only.
Storage:	4 °C, -20 °C
Storage Comment:	Maintain refrigerated at 2-8 °C for up to 6 months. For long term storage store at -20 °C in small aliquots to prevent freeze-thaw cycles.
Expiry Date:	6 months



### Flow Cytometry

**Image 1.** RS2 Antibody (Center) (ABIN391806 and ABIN2837974) flow cytometric analysis of K562 cells (right histogram) compared to a negative control cell (left histogram). FITC-conjugated goat-anti-rabbit secondary antibodies were used for the analysis.

### Western Blotting

**Image 2.** RS2 Antibody (Center) (ABIN391806 and ABIN2837974) western blot analysis in K562 cell line lysates (35 µg/lane). This demonstrates the RS2 antibody detected the RS2 protein (arrow).

### Immunohistochemistry (Paraffin-embedded Sections)

**Image 3.** RS2 Antibody (Center) (ABIN391806 and ABIN2837974) immunohistochemistry analysis in formalin fixed and paraffin embedded human stomach tissue followed by peroxidase conjugation of the secondary antibody and DAB staining. This data demonstrates the use of RS2 Antibody (Center) for immunohistochemistry. Clinical relevance has not been evaluated.