

Datasheet for ABIN391811  
**anti-BBS4 antibody (AA 337-369)**

## 2 Images

[Go to Product page](#)

## Overview

Quantity:	400 µL
Target:	BBS4
Binding Specificity:	AA 337-369
Reactivity:	Human
Host:	Rabbit
Clonality:	Polyclonal
Application:	Western Blotting (WB)

## Product Details

Immunogen:	This BBS4 antibody is generated from rabbits immunized with a KLH conjugated synthetic peptide between 337-369 amino acids from the Central region of human BBS4.
Clone:	RB14682
Isotype:	Ig Fraction
Purification:	This antibody is prepared by Saturated Ammonium Sulfate (SAS) precipitation followed by dialysis against PBS.

## Target Details

Target:	BBS4
Alternative Name:	BBS4 ( <a href="#">BBS4 Products</a> )
Background:	BBS4 contains tetratricopeptide repeats (TPR), similar to O-linked N-acetylglucosamine transferase. Mutations in the gene encoding this protein have been observed in patients with

## Target Details

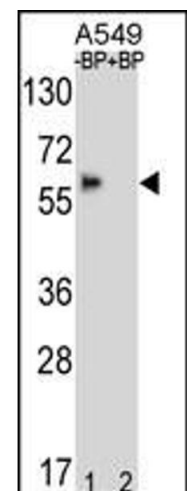
	Bardet-Biedl syndrome type 4. BBS4 may play a role in pigmentary retinopathy, obesity, polydactyly, renal malformation and mental retardation.
Molecular Weight:	58282
Gene ID:	585
NCBI Accession:	<a href="#">NP_001239607</a> , <a href="#">NP_149017</a>
UniProt:	<a href="#">Q96RK4</a>
Pathways:	<a href="#">Hedgehog Signaling</a> , <a href="#">Tube Formation</a> , <a href="#">Maintenance of Protein Location</a>

## Application Details

Application Notes:	WB: 1:1000. WB: 1:1000
Restrictions:	For Research Use only

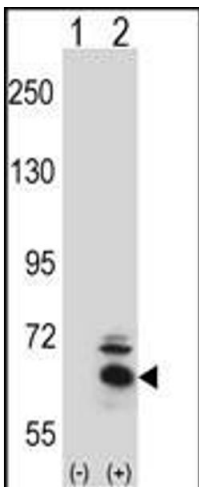
## Handling

Format:	Liquid
Buffer:	Purified polyclonal antibody supplied in PBS with 0.09 % (W/V) sodium azide.
Preservative:	Sodium azide
Precaution of Use:	This product contains Sodium azide: a POISONOUS AND HAZARDOUS SUBSTANCE which should be handled by trained staff only.
Storage:	4 °C, -20 °C
Storage Comment:	Maintain refrigerated at 2-8 °C for up to 6 months. For long term storage store at -20 °C in small aliquots to prevent freeze-thaw cycles.
Expiry Date:	6 months



#### Western Blotting

**Image 1.** Western blot analysis of BBS4 Antibody (Center) Pab (ABIN391811 and ABIN2841661) pre-incubated without (lane 1) and with (lane 2) blocking peptide in A549 cell line lysate. BBS4 Antibody (Center) (arrow) was detected using the purified Pab.



#### Western Blotting

**Image 2.** Western blot analysis of BBS4 (arrow) using rabbit polyclonal BBS4 Antibody (Center) (ABIN391811 and ABIN2841661). 293 cell lysates (2 µg/lane) either nontransfected (Lane 1) or transiently transfected (Lane 2) with the BBS4 gene.