



Datasheet for ABIN391824
anti-NCOA1 antibody (N-Term)



[Go to Product page](#)

1 Image

Overview

Quantity:	400 µL
Target:	NCOA1
Binding Specificity:	AA 186-214, N-Term
Reactivity:	Human
Host:	Rabbit
Clonality:	Polyclonal
Conjugate:	This NCOA1 antibody is un-conjugated
Application:	Western Blotting (WB)

Product Details

Immunogen:	This SRC1 antibody is generated from rabbits immunized with a KLH conjugated synthetic peptide between 186-214 amino acids from the N-terminal region of human SRC1.
Clone:	RB14365
Isotype:	Ig Fraction
Predicted Reactivity:	Pig
Purification:	This antibody is prepared by Saturated Ammonium Sulfate (SAS) precipitation followed by dialysis against PBS.

Target Details

Target:	NCOA1
---------	-------

Target Details

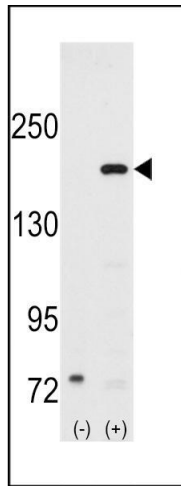
Alternative Name:	SRC1 (NCOA1 Products)
Background:	SRC1 acts as a transcriptional coactivator for steroid and nuclear hormone receptors. It is a member of the p160/steroid receptor coactivator (SRC) family and like other family members has histone acetyltransferase activity and contains a nuclear localization signal, as well as bHLH and PAS domains. This protein binds nuclear receptors directly and stimulates the transcriptional activities in a hormone-dependent fashion.
Molecular Weight:	156757
Gene ID:	8648
NCBI Accession:	NP_003734 , NP_671756 , NP_671766
UniProt:	Q15788
Pathways:	Intracellular Steroid Hormone Receptor Signaling Pathway , Nuclear Hormone Receptor Binding , Chromatin Binding , Regulation of Lipid Metabolism by PPARalpha

Application Details

Application Notes:	WB: 1:1000
Restrictions:	For Research Use only

Handling

Format:	Liquid
Buffer:	Purified polyclonal antibody supplied in PBS with 0.09 % (W/V) sodium azide.
Preservative:	Sodium azide
Precaution of Use:	This product contains Sodium azide: a POISONOUS AND HAZARDOUS SUBSTANCE which should be handled by trained staff only.
Storage:	4 °C,-20 °C
Storage Comment:	Maintain refrigerated at 2-8 °C for up to 6 months. For long term storage store at -20 °C in small aliquots to prevent freeze-thaw cycles.
Expiry Date:	6 months



Western Blotting

Image 1. Western blot analysis of SRC1 (arrow) using rabbit polyclonal SRC1 Antibody (N-term) (ABIN391824 and ABIN2841669). 293 cell lysates (2 μ g/lane) either nontransfected (Lane 1) or transiently transfected with the SRC1 gene (Lane 2) (Origene Technologies).