



[Go to Product page](#)

Datasheet for ABIN391842
anti-CLOCK antibody (AA 215-249)

2 Images

Overview

Quantity:	400 µL
Target:	CLOCK
Binding Specificity:	AA 215-249
Reactivity:	Human
Host:	Rabbit
Clonality:	Polyclonal
Conjugate:	This CLOCK antibody is un-conjugated
Application:	Western Blotting (WB), Immunohistochemistry (Paraffin-embedded Sections) (IHC (p))

Product Details

Immunogen:	This CLOCK antibody is generated from rabbits immunized with a KLH conjugated synthetic peptide between 215-249 amino acids from the Central region of human CLOCK.
Clone:	RB14279
Isotype:	Ig Fraction
Predicted Reactivity:	M, Rat
Purification:	This antibody is prepared by Saturated Ammonium Sulfate (SAS) precipitation followed by dialysis against PBS.

Target Details

Target:	CLOCK
---------	-------

Target Details

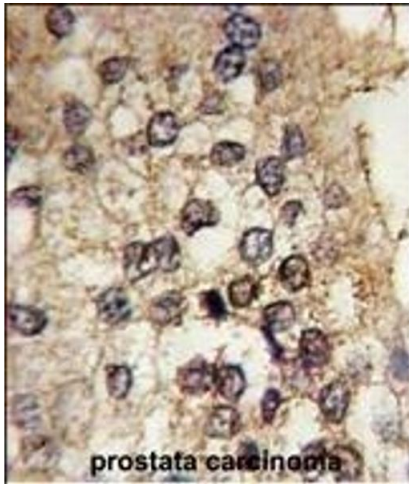
Alternative Name:	CLOCK (CLOCK Products)
Background:	<p>CLOCK belongs to the basic helix-loop-helix (bHLH) family of transcription factors. Polymorphisms within this protein have been associated with circadian rhythm sleep disorders. A similar protein in mice is a circadian regulator that acts as a transcription factor and forms a heterodimer with aryl hydrocarbon receptor nuclear translocator-like to activate transcription of mouse period 1.</p>
Molecular Weight:	95304
Gene ID:	9575
NCBI Accession:	NP_001254772 , NP_004889
UniProt:	O15516
Pathways:	Regulation of Lipid Metabolism by PPARalpha , Photoperiodism

Application Details

Application Notes:	WB: 1:1000. IHC-P: 1:10~50
Restrictions:	For Research Use only

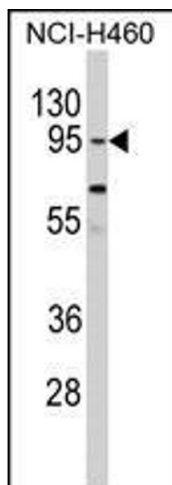
Handling

Format:	Liquid
Buffer:	Purified polyclonal antibody supplied in PBS with 0.09 % (W/V) sodium azide.
Preservative:	Sodium azide
Precaution of Use:	This product contains Sodium azide: a POISONOUS AND HAZARDOUS SUBSTANCE which should be handled by trained staff only.
Storage:	4 °C,-20 °C
Storage Comment:	Maintain refrigerated at 2-8 °C for up to 6 months. For long term storage store at -20 °C in small aliquots to prevent freeze-thaw cycles.
Expiry Date:	6 months



Immunohistochemistry (Paraffin-embedded Sections)

Image 1. Formalin-fixed and paraffin-embedded human prostata carcinoma tissue reacted with CLOCK antibody (Center) (ABIN391842 and ABIN2841680) , which was peroxidase-conjugated to the secondary antibody, followed by DAB staining. This data demonstrates the use of this antibody for immunohistochemistry, clinical relevance has not been evaluated.



Western Blotting

Image 2. Western blot analysis of CLOCK Antibody (Center) (ABIN391842 and ABIN2841680) in NCI- cell line lysates (35 µg/lane). CLOCK (arrow) was detected using the purified Pab.