

Datasheet for ABIN391843

**anti-CLIC5 antibody****2** Images[Go to Product page](#)

## Overview

Quantity:	400 µL
Target:	CLIC5
Reactivity:	Human
Host:	Rabbit
Clonality:	Polyclonal
Conjugate:	This CLIC5 antibody is un-conjugated
Application:	Western Blotting (WB), Immunohistochemistry (Paraffin-embedded Sections) (IHC (p))

## Product Details

Immunogen:	This CLIC5 antibody is generated from rabbits immunized with human recombinant CLIC5 protein.
Clone:	RB14724
Isotype:	Ig Fraction
Purification:	This antibody is prepared by Saturated Ammonium Sulfate (SAS) precipitation followed by dialysis against PBS.

## Target Details

Target:	CLIC5
Alternative Name:	CLIC5 ( <a href="#">CLIC5 Products</a> )
Background:	Chloride intracellular channels are involved in chloride ion transport within various subcellular compartments. CLIC5 specifically associates with the cytoskeleton of placenta microvilli.

## Target Details

Molecular Weight:	46503
Gene ID:	53405
NCBI Accession:	<a href="#">NP_001107558</a> , <a href="#">NP_001242952</a> , <a href="#">NP_058625</a>
UniProt:	<a href="#">Q9NZA1</a>
Pathways:	<a href="#">Sensory Perception of Sound</a>

## Application Details

Application Notes:	WB: 1:1000. IHC-P: 1:10~50
Restrictions:	For Research Use only

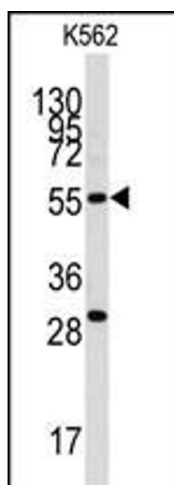
## Handling

Format:	Liquid
Buffer:	Purified polyclonal antibody supplied in PBS with 0.09 % (W/V) sodium azide.
Preservative:	Sodium azide
Precaution of Use:	This product contains Sodium azide: a POISONOUS AND HAZARDOUS SUBSTANCE which should be handled by trained staff only.
Storage:	4 °C, -20 °C
Storage Comment:	Maintain refrigerated at 2-8 °C for up to 6 months. For long term storage store at -20 °C in small aliquots to prevent freeze-thaw cycles.
Expiry Date:	6 months



#### Immunohistochemistry (Paraffin-embedded Sections)

**Image 1.** Formalin-fixed and paraffin-embedded human colon carcinoma tissue reacted with CLIC5 antibody (ABIN391843 and ABIN2841681), which was peroxidase-conjugated to the secondary antibody, followed by DAB staining. This data demonstrates the use of this antibody for immunohistochemistry, clinical relevance has not been evaluated.



#### Western Blotting

**Image 2.** Western blot analysis of anti-CLIC5 Antibody (ABIN391843 and ABIN2841681) in K562 cell line lysates (35 µg/lane). CLIC5 (arrow) was detected using the purified Pab.