



[Go to Product page](#)

Datasheet for ABIN391857

## anti-E2F1 antibody (AA 310-344)

1 Image

3 Publications

### Overview

Quantity:	400 µL
Target:	E2F1
Binding Specificity:	AA 310-344
Reactivity:	Human
Host:	Rabbit
Clonality:	Polyclonal
Conjugate:	This E2F1 antibody is un-conjugated
Application:	Western Blotting (WB)

### Product Details

Immunogen:	This E2F1 antibody is generated from rabbits immunized with a KLH conjugated synthetic peptide between 310-344 amino acids from human E2F1.
Clone:	RB08111
Isotype:	Ig Fraction
Purification:	This antibody is purified through a protein A column, followed by peptide affinity purification.

### Target Details

Target:	E2F1
Alternative Name:	E2F1 ( <a href="#">E2F1 Products</a> )
Background:	E2F1 is a member of the E2F family of transcription factors. The E2F family plays a crucial role

## Target Details

---

in the control of cell cycle and action of tumor suppressor proteins and is also a target of the transforming proteins of small DNA tumor viruses. The E2F proteins contain several evolutionally conserved domains found in most members of the family. These domains include a DNA binding domain, a dimerization domain which determines interaction with the differentiation regulated transcription factor proteins (DP), a transactivation domain enriched in acidic amino acids, and a tumor suppressor protein association domain which is embedded within the transactivation domain. This protein and another two members, E2F2 and E2F3, have an additional cyclin binding domain. This protein binds preferentially to retinoblastoma protein pRB in a cell-cycle dependent manner. It can mediate both cell proliferation and p53-dependent/independent apoptosis.

---

Molecular Weight: 46920

---

Gene ID: 1869

---

NCBI Accession: [NP\\_005216](#)

---

UniProt: [Q01094](#)

---

Pathways: [p53 Signaling](#), [Cell Division Cycle](#), [Mitotic G1-G1/S Phases](#), [DNA Replication](#), [M Phase](#), [Autophagy](#)

## Application Details

---

---

Application Notes: WB: 1:1000

---

Restrictions: For Research Use only

## Handling

---

---

Format: Liquid

---

Buffer: Purified polyclonal antibody supplied in PBS with 0.09 % (W/V) sodium azide.

---

Preservative: Sodium azide

---

Precaution of Use: This product contains Sodium azide: a POISONOUS AND HAZARDOUS SUBSTANCE which should be handled by trained staff only.

---

Storage: 4 °C, -20 °C

---

Storage Comment: Maintain refrigerated at 2-8 °C for up to 6 months. For long term storage store at -20 °C in small aliquots to prevent freeze-thaw cycles.

---

Expiry Date: 6 months

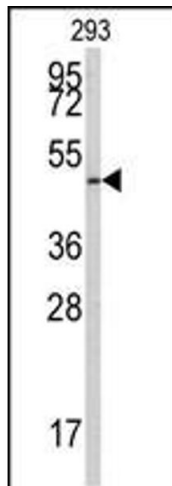
## Publications

---

Product cited in: Chen, Hou, Fan, Jin, Wang: "Sonic hedgehog protein regulates fibroblast growth factor 8 expression in metanephric explant culture from BALB/c mice: Possible mechanisms associated with renal morphogenesis." in: **Molecular medicine reports**, Vol. 14, Issue 4, pp. 2929-36, (2017) ([PubMed](#)).

## Images

---



### Western Blotting

**Image 1.** Western blot analysis of anti-E2F1 Antibody (ABIN391857 and ABIN2841688) in 293 cell line lysates (35 µg/lane). E2F1 (arrow) was detected using the purified Pab.