

Datasheet for ABIN391859
anti-KREMEN1 antibody (N-Term)

2 Images

[Go to Product page](#)

Overview

Quantity:	400 µL
Target:	KREMEN1
Binding Specificity:	AA 53-82, N-Term
Reactivity:	Human
Host:	Rabbit
Clonality:	Polyclonal
Conjugate:	This KREMEN1 antibody is un-conjugated
Application:	Western Blotting (WB), Flow Cytometry (FACS)

Product Details

Immunogen:	This KREMEN1 antibody is generated from rabbits immunized with a KLH conjugated synthetic peptide between 53-82 amino acids from the N-terminal region of human KREMEN1.
Clone:	RB10586
Isotype:	Ig Fraction
Predicted Reactivity:	M
Purification:	This antibody is prepared by Saturated Ammonium Sulfate (SAS) precipitation followed by dialysis against PBS.

Target Details

Target:	KREMEN1
---------	---------

Target Details

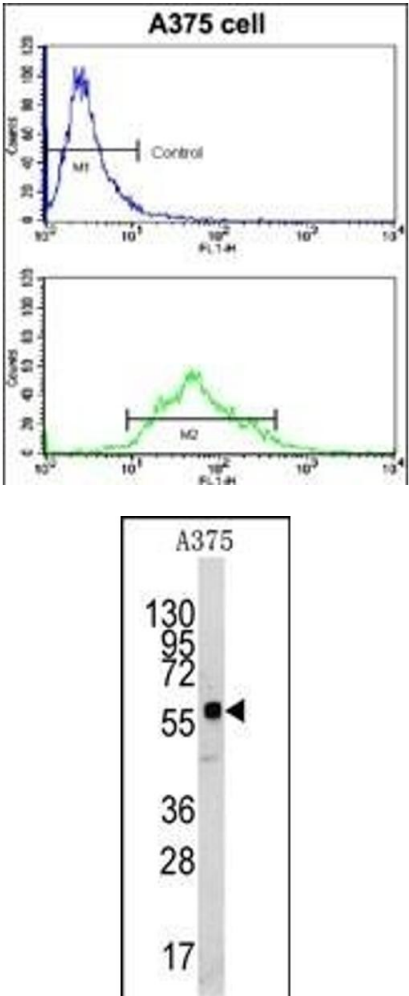
Alternative Name:	KREMEN1 (KREMEN1 Products)
Background:	KREMEN1 is a high-affinity dickkopf homolog 1 (DKK1) transmembrane receptor that functionally cooperates with DKK1 to block wingless (WNT)/beta-catenin signaling. This protein is a component of a membrane complex that modulates canonical WNT signaling through lipoprotein receptor-related protein 6 (LRP6). It contains extracellular kringle, WSC, and CUB domains.
Molecular Weight:	51744
Gene ID:	83999
NCBI Accession:	NP_001034659 , NP_114434
UniProt:	Q96MU8
Pathways:	WNT Signaling

Application Details

Application Notes:	WB: 1:1000. FC: 1:10~50
Restrictions:	For Research Use only

Handling

Format:	Liquid
Buffer:	Purified polyclonal antibody supplied in PBS with 0.09 % (W/V) sodium azide.
Preservative:	Sodium azide
Precaution of Use:	This product contains Sodium azide: a POISONOUS AND HAZARDOUS SUBSTANCE which should be handled by trained staff only.
Storage:	4 °C,-20 °C
Storage Comment:	Maintain refrigerated at 2-8 °C for up to 6 months. For long term storage store at -20 °C in small aliquots to prevent freeze-thaw cycles.
Expiry Date:	6 months



Flow Cytometry

Image 1. Flow cytometric analysis of cells using KREMEN1 Antibody (N-term) (bottom histogram) compared to a negative control cell (top histogram). FITC-conjugated goat-anti-rabbit secondary antibodies were used for the analysis.

Western Blotting

Image 2. Western blot analysis of anti-KREMEN1 Antibody (N-term) (ABIN391859 and ABIN2841690) in cell line lysates (35 µg/lane).KREMEN1(arrow) was detected using the purified Pab.