



[Go to Product page](#)

Datasheet for ABIN391876
anti-AXL antibody (N-Term)

3 Images

Overview

Quantity:	400 µL
Target:	AXL
Binding Specificity:	AA 13-44, N-Term
Reactivity:	Human
Host:	Rabbit
Clonality:	Polyclonal
Application:	Western Blotting (WB), Flow Cytometry (FACS), Immunohistochemistry (Paraffin-embedded Sections) (IHC (p))

Product Details

Immunogen:	This AXL antibody is generated from rabbits immunized with a KLH conjugated synthetic peptide between 13-44 amino acids from the N-terminal region of human AXL.
Clone:	RB1481
Isotype:	Ig Fraction
Purification:	This antibody is prepared by Saturated Ammonium Sulfate (SAS) precipitation followed by dialysis against PBS.

Target Details

Target:	AXL
Alternative Name:	AXL (AXL Products)
Background:	AXL, a member of the AXL/UFO subfamily of Tyr protein kinases, may function as a signal

Target Details

transducer between specific cell types of mesodermal origin. This Type I membrane protein has transforming potential in patients with chronic myeloproliferative disorder or chronic myelocytic leukemia. The protein contains 2 putative fibronectin type III domains and 2 putative immunoglobulin-like C2-type domains.

Molecular Weight: 98337

Gene ID: 558

NCBI Accession: [NP_001690](#), [NP_068713](#)

UniProt: [P30530](#)

Pathways: [RTK Signaling](#), [Cellular Response to Molecule of Bacterial Origin](#)

Application Details

Application Notes: WB: 1:1000. IHC-P: 1:50~100. FC: 1:10~50

Restrictions: For Research Use only

Handling

Format: Liquid

Buffer: Purified polyclonal antibody supplied in PBS with 0.09 % (W/V) sodium azide.

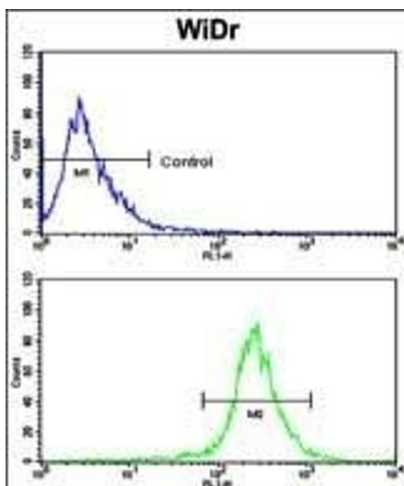
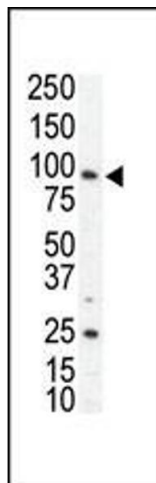
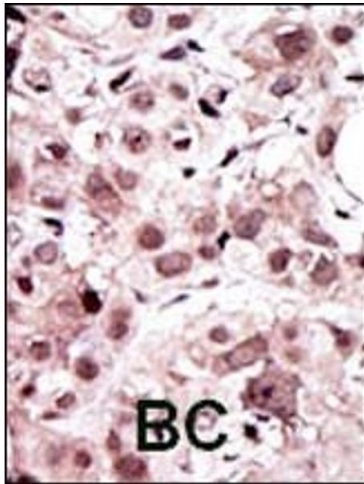
Preservative: Sodium azide

Precaution of Use: This product contains Sodium azide: a POISONOUS AND HAZARDOUS SUBSTANCE which should be handled by trained staff only.

Storage: 4 °C,-20 °C

Storage Comment: Maintain refrigerated at 2-8 °C for up to 6 months. For long term storage store at -20 °C in small aliquots to prevent freeze-thaw cycles.

Expiry Date: 6 months



Immunohistochemistry (Paraffin-embedded Sections)

Image 1. Formalin-fixed and paraffin-embedded human cancer tissue reacted with the primary antibody, which was peroxidase-conjugated to the secondary antibody, followed by AEC staining. This data demonstrates the use of this antibody for immunohistochemistry, clinical relevance has not been evaluated. BC = breast carcinoma, HC = hepatocarcinoma.

Western Blotting

Image 2. Western blot analysis of anti-AXL N-term Pab (ABIN391876 and ABIN2841696) in SKBR3 cell lysate. AXL (arrow) was detected using purified Pab. Secondary HRP-anti-rabbit was used for signal visualization with chemiluminescence.

Flow Cytometry

Image 3. Flow cytometric analysis of WiDr cells using AXL Antibody (N-term) (bottom histogram) compared to a negative control cell (top histogram). FITC-conjugated goat-anti-rabbit secondary antibodies were used for the analysis.