

Datasheet for ABIN391877
anti-AXL antibody (C-Term)

2 Images

1 Publication

[Go to Product page](#)

Overview

Quantity:	400 µL
Target:	AXL
Binding Specificity:	AA 863-894, C-Term
Reactivity:	Human
Host:	Rabbit
Clonality:	Polyclonal
Application:	Western Blotting (WB), Immunohistochemistry (Paraffin-embedded Sections) (IHC (p))

Product Details

Immunogen:	This AXL antibody is generated from rabbits immunized with a KLH conjugated synthetic peptide between 863-894 amino acids from the C-terminal region of human AXL.
Clone:	RB1483
Isotype:	Ig Fraction
Purification:	This antibody is prepared by Saturated Ammonium Sulfate (SAS) precipitation followed by dialysis against PBS.

Target Details

Target:	AXL
Alternative Name:	AXL (AXL Products)
Background:	AXL, a member of the AXL/UFO subfamily of Tyr protein kinases, may function as a signal transducer between specific cell types of mesodermal origin. This Type I membrane protein

Target Details

	has transforming potential in patients with chronic myeloproliferative disorder or chronic myelocytic leukemia. The protein contains 2 putative fibronectin type III domains and 2 putative immunoglobulin-like C2-type domains.
Molecular Weight:	98337
Gene ID:	558
NCBI Accession:	NP_001690 , NP_068713
UniProt:	P30530
Pathways:	RTK Signaling , Cellular Response to Molecule of Bacterial Origin

Application Details

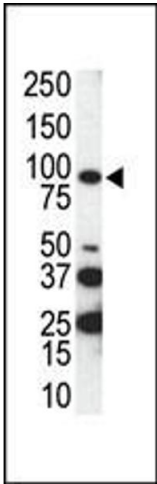
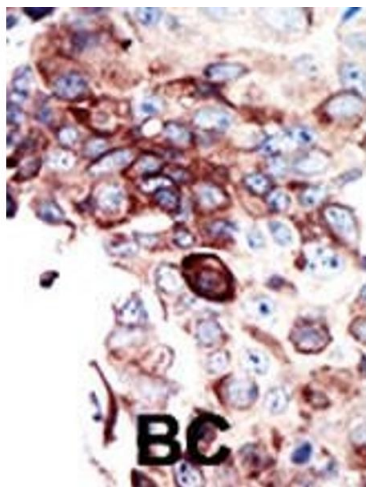
Application Notes:	WB: 1:1000. IHC-P: 1:50~100
Restrictions:	For Research Use only

Handling

Format:	Liquid
Buffer:	Purified polyclonal antibody supplied in PBS with 0.09 % (W/V) sodium azide.
Preservative:	Sodium azide
Precaution of Use:	This product contains Sodium azide: a POISONOUS AND HAZARDOUS SUBSTANCE which should be handled by trained staff only.
Handling Advice:	Avoid freeze-thaw cycles.
Storage:	4 °C, -20 °C
Storage Comment:	Maintain refrigerated at 2-8 °C for up to 6 months. For long term storage store at -20 °C in small aliquots.
Expiry Date:	6 months

Publications

Product cited in:	Hu, Liu, Liu, Zheng, Liu, Luo, Gao, Zhao, Zou: "Role of axl in preeclamptic EPCs functions." in: Journal of Huazhong University of Science and Technology. Medical sciences = Hua zhong ke ji da xue xue bao. Yi xue Ying De wen ban = Huazhong keji daxue xuebao. Yixue Yingdewen ban , Vol. 36, Issue 3, pp. 395-401, (2017) (PubMed).
-------------------	---



Immunohistochemistry (Paraffin-embedded Sections)

Image 1. Formalin-fixed and paraffin-embedded human cancer tissue reacted with the primary antibody, which was peroxidase-conjugated to the secondary antibody, followed by DAB staining. This data demonstrates the use of this antibody for immunohistochemistry, clinical relevance has not been evaluated. BC = breast carcinoma, HC = hepatocarcinoma.

Western Blotting

Image 2. Western blot analysis of anti-AXL C-term Pab (ABIN391877 and ABIN2841697) in SKBR3 cell lysate. AXL (arrow) was detected using purified Pab. Secondary HRP-anti-rabbit was used for signal visualization with chemiluminescence.