

Datasheet for ABIN391881
anti-LUM antibody (N-Term)

3 Images

1 Publication

[Go to Product page](#)

Overview

Quantity:	400 µL
Target:	LUM
Binding Specificity:	AA 64-91, N-Term
Reactivity:	Human, Mouse
Host:	Rabbit
Clonality:	Polyclonal
Conjugate:	This LUM antibody is un-conjugated
Application:	Western Blotting (WB), Flow Cytometry (FACS), Immunohistochemistry (Paraffin-embedded Sections) (IHC (p))

Product Details

Immunogen:	This LUM antibody is generated from rabbits immunized with a KLH conjugated synthetic peptide between 64-91 amino acids from the N-terminal region of human LUM.
Clone:	RB18422
Isotype:	Ig Fraction
Predicted Reactivity:	Rat
Purification:	This antibody is prepared by Saturated Ammonium Sulfate (SAS) precipitation followed by dialysis against PBS.

Target Details

Target:	LUM
---------	-----

Target Details

Alternative Name:	LUM (LUM Products)
Background:	LUM is a member of the small leucine-rich proteoglycan (SLRP) family that includes decorin, biglycan, fibromodulin, keratocan, epiphykan, and osteoglycin. In these bifunctional molecules, this protein moiety binds collagen fibrils and the highly charged hydrophilic glycosaminoglycans regulate interfibrillar spacings. The protein is the major keratan sulfate proteoglycan of the cornea but is also distributed in interstitial collagenous matrices throughout the body. Lumican may regulate collagen fibril organization and circumferential growth, corneal transparency, and epithelial cell migration and tissue repair.
Molecular Weight:	38429
Gene ID:	4060
NCBI Accession:	NP_002336
UniProt:	P51884
Pathways:	Glycosaminoglycan Metabolic Process

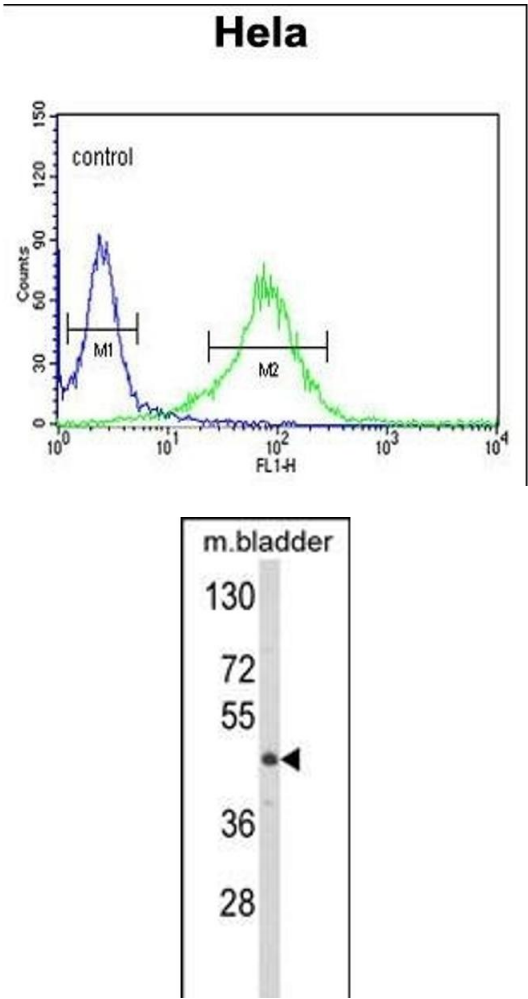
Application Details

Application Notes:	WB: 1:1000. IHC-P: 1:50~100. FC: 1:10~50
Restrictions:	For Research Use only

Handling

Format:	Liquid
Buffer:	Purified polyclonal antibody supplied in PBS with 0.09 % (W/V) sodium azide.
Preservative:	Sodium azide
Precaution of Use:	This product contains Sodium azide: a POISONOUS AND HAZARDOUS SUBSTANCE which should be handled by trained staff only.
Storage:	4 °C, -20 °C
Storage Comment:	Maintain refrigerated at 2-8 °C for up to 6 months. For long term storage store at -20 °C in small aliquots to prevent freeze-thaw cycles.
Expiry Date:	6 months

Product cited in: Chen, Hou, Fan, Jin, Wang: "Sonic hedgehog protein regulates fibroblast growth factor 8 expression in metanephric explant culture from BALB/c mice: Possible mechanisms associated with renal morphogenesis." in: **Molecular medicine reports**, Vol. 14, Issue 4, pp. 2929-36, (2017) ([PubMed](#)).

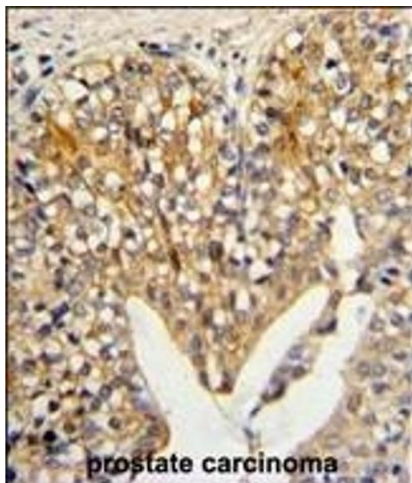


Flow Cytometry

Image 1. LUM Antibody (N-term) (ABIN391881 and ABIN2841701) flow cytometric analysis of Hela cells (right histogram) compared to a negative control cell (left histogram). FITC-conjugated goat-anti-rabbit secondary antibodies were used for the analysis.

Western Blotting

Image 2. Western blot analysis of LUM Antibody (N-term) (ABIN391881 and ABIN2841701) in mouse bladder tissue lysates (35 µg/lane). LUM (arrow) was detected using the purified Pab.



Immunohistochemistry (Paraffin-embedded Sections)

Image 3. Formalin-fixed and paraffin-embedded human prostate carcinoma reacted with LUM Antibody (N-term), which was peroxidase-conjugated to the secondary antibody, followed by DAB staining. This data demonstrates the use of this antibody for immunohistochemistry, clinical relevance has not been evaluated.