

Datasheet for ABIN391893  
**anti-EPH Receptor A5 antibody (C-Term)****2** Images**1** Publication[Go to Product page](#)

## Overview

Quantity:	400 µL
Target:	EPH Receptor A5 (EPHA5)
Binding Specificity:	AA 942-972, C-Term
Reactivity:	Human, Mouse
Host:	Rabbit
Clonality:	Polyclonal
Conjugate:	This EPH Receptor A5 antibody is un-conjugated
Application:	Western Blotting (WB), Immunohistochemistry (Paraffin-embedded Sections) (IHC (p))

## Product Details

Immunogen:	This EphA5 antibody is generated from rabbits immunized with a KLH conjugated synthetic peptide between 942-972 amino acids from the C-terminal region of human EphA5.
Clone:	RB1658
Isotype:	Ig Fraction
Purification:	This antibody is prepared by Saturated Ammonium Sulfate (SAS) precipitation followed by dialysis against PBS.

## Target Details

Target:	EPH Receptor A5 (EPHA5)
Alternative Name:	EphA5 ( <a href="#">EPHA5 Products</a> )

## Target Details

Background:	Protein kinases are enzymes that transfer a phosphate group from a phosphate donor, generally the $\gamma$ phosphate of ATP, onto an acceptor amino acid in a substrate protein. By this basic mechanism, protein kinases mediate most of the signal transduction in eukaryotic cells, regulating cellular metabolism, transcription, cell cycle progression, cytoskeletal rearrangement and cell movement, apoptosis, and differentiation. With more than 500 gene products, the protein kinase family is one of the largest families of proteins in eukaryotes. The family has been classified in 8 major groups based on sequence comparison of their tyrosine (PTK) or serine/threonine (STK) kinase catalytic domains. The tyrosine kinase (TK) group is mainly involved in the regulation of cell-cell interactions such as differentiation, adhesion, motility and death. There are currently about 90 TK genes sequenced, 58 are of receptor protein TK (e.g. EGFR, EPH, FGFR, PDGFR, TRK, and VEGFR families), and 32 of cytosolic TK (e.g. ABL, FAK, JAK, and SRC families).
Molecular Weight:	114803
Gene ID:	2044
NCBI Accession:	<a href="#">NP_004430</a> , <a href="#">NP_872272</a>
UniProt:	<a href="#">P54756</a>
Pathways:	<a href="#">RTK Signaling</a>

## Application Details

Application Notes:	WB: 1:1000. IHC-P: 1:50~100
Restrictions:	For Research Use only

## Handling

Format:	Liquid
Buffer:	Purified polyclonal antibody supplied in PBS with 0.09 % (W/V) sodium azide.
Preservative:	Sodium azide
Precaution of Use:	This product contains Sodium azide: a POISONOUS AND HAZARDOUS SUBSTANCE which should be handled by trained staff only.
Storage:	4 °C, -20 °C
Storage Comment:	Maintain refrigerated at 2-8 °C for up to 6 months. For long term storage store at -20 °C in small aliquots to prevent freeze-thaw cycles.

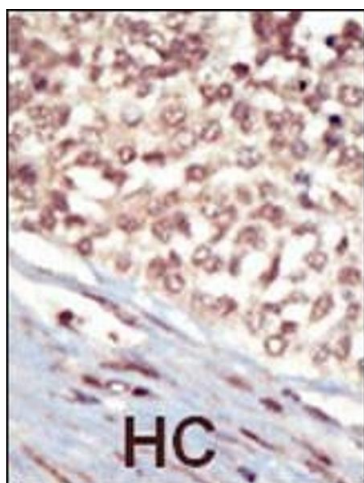
## Handling

Expiry Date: 6 months

## Publications

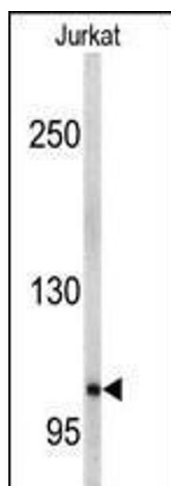
- Product cited in: Abdelalim, Masuda, Tooyama: "Expression of natriuretic peptide-activated guanylate cyclases by cholinergic and dopaminergic amacrine cells of the rat retina." in: **Peptides**, Vol. 29, Issue 4, pp. 622-8, (2008) ([PubMed](#)).
- Dams, Van Acker, Gustin, Vereycken, Bunkens, Holemans, Smeulders, Clayton, Ohagen, Hertogs: "A time-resolved fluorescence assay to identify small-molecule inhibitors of HIV-1 fusion." in: **Journal of biomolecular screening**, Vol. 12, Issue 6, pp. 865-74, (2007) ([PubMed](#)).
- Tomescot, Leschik, Bellamy, Dubois, Messas, Bruneval, Desnos, Hagège, Amit, Itskovitz, Menasché, Pucéat: "Differentiation in vivo of cardiac committed human embryonic stem cells in postmyocardial infarcted rats." in: **Stem cells (Dayton, Ohio)**, Vol. 25, Issue 9, pp. 2200-5, (2007) ([PubMed](#)).

## Images



### Immunohistochemistry (Paraffin-embedded Sections)

**Image 1.** Formalin-fixed and paraffin-embedded human cancer tissue reacted with the primary antibody, which was peroxidase-conjugated to the secondary antibody, followed by AEC staining. This data demonstrates the use of this antibody for immunohistochemistry, clinical relevance has not been evaluated. BC = breast carcinoma, HC = hepatocarcinoma.



#### Western Blotting

**Image 2.** Western blot analysis of anti-EphA5 Antibody (C-term) (ABIN391893 and ABIN2841712) in Jurkat cell line lysates (35 µg/lane). EPHA5(arrow) was detected using the purified Pab.