



[Go to Product page](#)

Datasheet for ABIN391910
anti-PHACTR2 antibody (N-Term)

2 Images

Overview

Quantity:	400 µL
Target:	PHACTR2
Binding Specificity:	AA 169-198, N-Term
Reactivity:	Human
Host:	Rabbit
Clonality:	Polyclonal
Conjugate:	This PHACTR2 antibody is un-conjugated
Application:	Western Blotting (WB), Immunohistochemistry (Paraffin-embedded Sections) (IHC (p))

Product Details

Immunogen:	This PHACTR2 antibody is generated from rabbits immunized with a KLH conjugated synthetic peptide between 169-198 amino acids from the N-terminal region of human PHACTR2.
Clone:	RB18550
Isotype:	Ig Fraction
Purification:	This antibody is prepared by Saturated Ammonium Sulfate (SAS) precipitation followed by dialysis against PBS.

Target Details

Target:	PHACTR2
Alternative Name:	PHACTR2 (PHACTR2 Products)

Target Details

Molecular Weight:	69700
Gene ID:	9749
NCBI Accession:	NP_001093634 , NP_001093635 , NP_001093636 , NP_055536
UniProt:	O75167

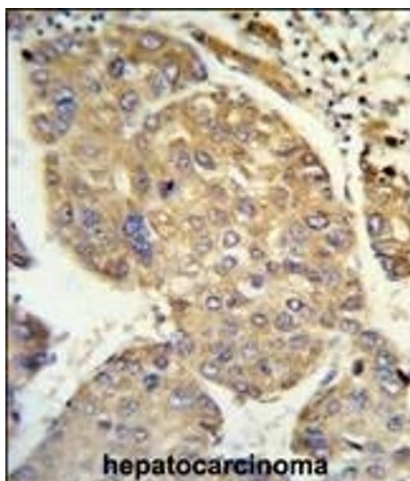
Application Details

Application Notes:	WB: 1:1000. IHC-P: 1:50~100
Restrictions:	For Research Use only

Handling

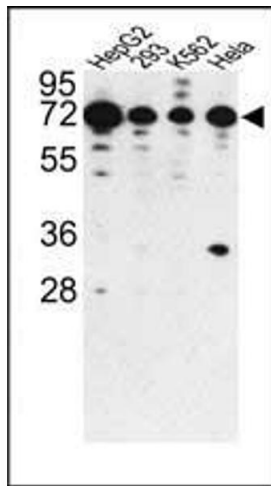
Format:	Liquid
Buffer:	Purified polyclonal antibody supplied in PBS with 0.09 % (W/V) sodium azide.
Preservative:	Sodium azide
Precaution of Use:	This product contains Sodium azide: a POISONOUS AND HAZARDOUS SUBSTANCE which should be handled by trained staff only.
Storage:	4 °C,-20 °C
Storage Comment:	Maintain refrigerated at 2-8 °C for up to 6 months. For long term storage store at -20 °C in small aliquots to prevent freeze-thaw cycles.
Expiry Date:	6 months

Images



Immunohistochemistry (Paraffin-embedded Sections)

Image 1. Formalin-fixed and paraffin-embedded human hepatocarcinoma reacted with PHACTR2 Antibody (N-term), which was peroxidase-conjugated to the secondary antibody, followed by DAB staining. This data demonstrates the use of this antibody for immunohistochemistry, clinical relevance has not been evaluated.



Western Blotting

Image 2. Western blot analysis of PHACTR2 antibody (N-term) (ABIN391910 and ABIN2841724) in HepG2, 293, K562 and HeLa cell line lysates (35 µg/lane). PHACTR2 (arrow) was detected using the purified Pab.