



[Go to Product page](#)

Datasheet for ABIN391925

anti-POLDIP2 antibody (C-Term)

3 Images

Overview

Quantity:	400 µL
Target:	POLDIP2
Binding Specificity:	AA 320-349, C-Term
Reactivity:	Human, Mouse
Host:	Rabbit
Clonality:	Polyclonal
Conjugate:	This POLDIP2 antibody is un-conjugated
Application:	Western Blotting (WB), Flow Cytometry (FACS)

Product Details

Immunogen:	This POLDIP2 antibody is generated from rabbits immunized with a KLH conjugated synthetic peptide between 320-349 amino acids from the C-terminal region of human POLDIP2.
Clone:	RB18579
Isotype:	Ig Fraction
Purification:	This antibody is prepared by Saturated Ammonium Sulfate (SAS) precipitation followed by dialysis against PBS.

Target Details

Target:	POLDIP2
Alternative Name:	POLDIP2 (POLDIP2 Products)

Target Details

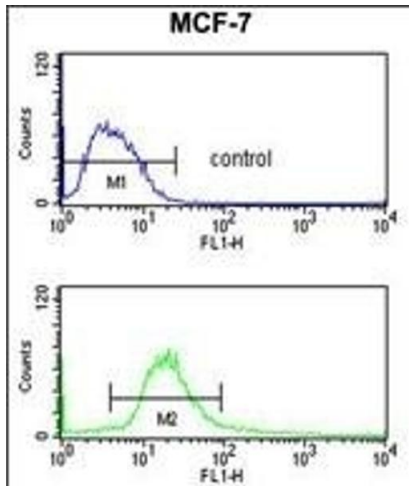
Background:	POLDIP2 is a protein that interacts with the DNA polymerase delta p50 subunit. This protein also interacts with proliferating cell nuclear antigen. Some transcripts of POLDIP2 gene overlap in a tail-to-tail orientation with the gene for tumor necrosis factor, alpha-induced protein 1 (TNFAIP1).
Gene ID:	26073
NCBI Accession:	NP_056399
UniProt:	Q9Y2S7

Application Details

Application Notes:	WB: 1:1000. WB: 1:1000. FC: 1:10~50
Restrictions:	For Research Use only

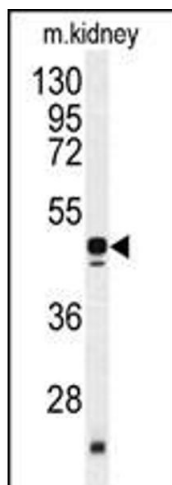
Handling

Format:	Liquid
Buffer:	Purified polyclonal antibody supplied in PBS with 0.09 % (W/V) sodium azide.
Preservative:	Sodium azide
Precaution of Use:	This product contains Sodium azide: a POISONOUS AND HAZARDOUS SUBSTANCE which should be handled by trained staff only.
Storage:	4 °C,-20 °C
Storage Comment:	Maintain refrigerated at 2-8 °C for up to 6 months. For long term storage store at -20 °C in small aliquots to prevent freeze-thaw cycles.
Expiry Date:	6 months



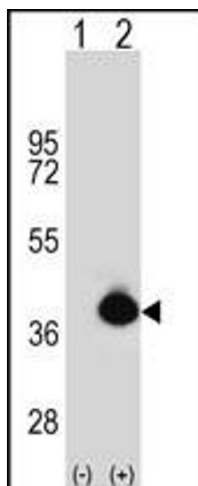
Flow Cytometry

Image 1. POLDIP2 Antibody (C-term) (ABIN391925 and ABIN2841735) flow cytometry analysis of MCF-7 cells (bottom histogram) compared to a negative control cell (top histogram). FITC-conjugated goat-anti-rabbit secondary antibodies were used for the analysis.



Western Blotting

Image 2. Western blot analysis of POLDIP2 antibody (C-term) (ABIN391925 and ABIN2841735) in mouse kidney tissue lysates (35 µg/lane). POLDIP2 (arrow) was detected using the purified Pab.



Western Blotting

Image 3. Western blot analysis of POLDIP2 (arrow) using rabbit polyclonal POLDIP2 Antibody (C-term) (ABIN391925 and ABIN2841735). 293 cell lysates (2 µg/lane) either nontransfected (Lane 1) or transiently transfected (Lane 2) with the POLDIP2 gene.