

Datasheet for ABIN391962
anti-FGFR1 antibody (AA 744-773)



[Go to Product page](#)

1 Image

Overview

Quantity:	400 µL
Target:	FGFR1
Binding Specificity:	AA 744-773
Reactivity:	Human
Host:	Rabbit
Clonality:	Polyclonal
Conjugate:	This FGFR1 antibody is un-conjugated
Application:	Western Blotting (WB)

Product Details

Immunogen:	This FGFR1 antibody is generated from rabbits immunized with a KLH conjugated synthetic peptide between 744-773 amino acids from human FGFR1.
Clone:	RB11274
Isotype:	Ig Fraction
Predicted Reactivity:	Rat
Purification:	This antibody is purified through a protein A column, followed by peptide affinity purification.

Target Details

Target:	FGFR1
Alternative Name:	FGFR1 (FGFR1 Products)

Target Details

Background: FGFR1 is a member of the fibroblast growth factor receptor family, where amino acid sequence is highly conserved between members and throughout evolution. FGFR family members differ from one another in their ligand affinities and tissue distribution. A full-length representative protein consists of an extracellular region, composed of three immunoglobulin-like domains, a single hydrophobic membrane-spanning segment and a cytoplasmic tyrosine kinase domain. The extracellular portion of the protein interacts with fibroblast growth factors, setting in motion a cascade of downstream signals, ultimately influencing mitogenesis and differentiation. This particular family member binds both acidic and basic fibroblast growth factors and is involved in limb induction. Mutations in this gene can lead to Pfeiffer syndrome and Jackson-Weiss syndrome.

Molecular Weight: 91868

Gene ID: 2260

NCBI Accession: [NP_001167534](#), [NP_001167535](#), [NP_001167536](#), [NP_001167537](#), [NP_001167538](#), [NP_056934](#), [NP_075593](#), [NP_075594](#), [NP_075598](#)

UniProt: [P11362](#)

Pathways: [RTK Signaling](#), [Fc-epsilon Receptor Signaling Pathway](#), [EGFR Signaling Pathway](#), [Neurotrophin Signaling Pathway](#), [Sensory Perception of Sound](#), [Stem Cell Maintenance](#), [S100 Proteins](#)

Application Details

Application Notes: WB: 1:1000

Restrictions: For Research Use only

Handling

Format: Liquid

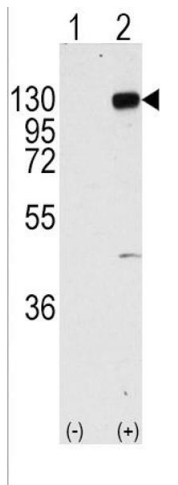
Buffer: Purified polyclonal antibody supplied in PBS with 0.09 % (W/V) sodium azide.

Preservative: Sodium azide

Precaution of Use: This product contains Sodium azide: a POISONOUS AND HAZARDOUS SUBSTANCE which should be handled by trained staff only.

Storage: 4 °C, -20 °C

Storage Comment: Maintain refrigerated at 2-8 °C for up to 6 months. For long term storage store at -20 °C in small aliquots to prevent freeze-thaw cycles.



Western Blotting

Image 1. Western blot analysis of FGFR1 (arrow) using rabbit polyclonal FGFR1 Antibody (R). 293 cell lysates (2 μ g/lane) either nontransfected (Lane 1) or transiently transfected with the FGFR1 gene (Lane 2) (Origene Technologies).