

Datasheet for ABIN391964
anti-FGFR1 antibody (AA 132-161)[Go to Product page](#)

2 Images

Overview

Quantity:	400 µL
Target:	FGFR1
Binding Specificity:	AA 132-161
Reactivity:	Human
Host:	Rabbit
Clonality:	Polyclonal
Conjugate:	This FGFR1 antibody is un-conjugated
Application:	Western Blotting (WB)

Product Details

Immunogen:	This FGFR1 antibody is generated from rabbits immunized with a KLH conjugated synthetic peptide between 132-161 amino acids from human FGFR1.
Clone:	RB12705
Isotype:	Ig Fraction
Purification:	This antibody is purified through a protein A column, followed by peptide affinity purification.

Target Details

Target:	FGFR1
Alternative Name:	FGFR1 (FGFR1 Products)
Background:	FGFR1 is a member of the fibroblast growth factor receptor family, where amino acid sequence

Target Details

is highly conserved between members and throughout evolution. FGFR family members differ from one another in their ligand affinities and tissue distribution. A full-length representative protein consists of an extracellular region, composed of three immunoglobulin-like domains, a single hydrophobic membrane-spanning segment and a cytoplasmic tyrosine kinase domain. The extracellular portion of the protein interacts with fibroblast growth factors, setting in motion a cascade of downstream signals, ultimately influencing mitogenesis and differentiation. This particular family member binds both acidic and basic fibroblast growth factors and is involved in limb induction. Mutations in this gene can lead to Pfeiffer syndrome and Jackson-Weiss syndrome.

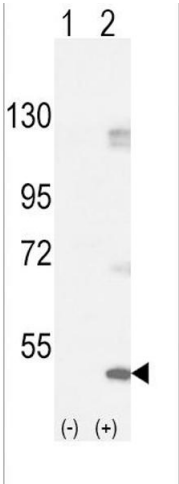
Molecular Weight:	91868
Gene ID:	2260
NCBI Accession:	NP_001167534 , NP_001167535 , NP_001167536 , NP_001167537 , NP_001167538 , NP_056934 , NP_075593 , NP_075594 , NP_075598
UniProt:	P11362
Pathways:	RTK Signaling , Fc-epsilon Receptor Signaling Pathway , EGFR Signaling Pathway , Neurotrophin Signaling Pathway , Sensory Perception of Sound , Stem Cell Maintenance , S100 Proteins

Application Details

Application Notes:	WB: 1:1000. WB: 1:1000
Restrictions:	For Research Use only

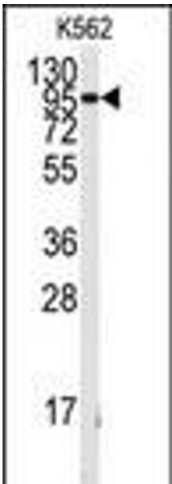
Handling

Format:	Liquid
Buffer:	Purified polyclonal antibody supplied in PBS with 0.09 % (W/V) sodium azide.
Preservative:	Sodium azide
Precaution of Use:	This product contains Sodium azide: a POISONOUS AND HAZARDOUS SUBSTANCE which should be handled by trained staff only.
Storage:	4 °C, -20 °C
Storage Comment:	Maintain refrigerated at 2-8 °C for up to 6 months. For long term storage store at -20 °C in small aliquots to prevent freeze-thaw cycles.
Expiry Date:	6 months



Western Blotting

Image 1. Western blot analysis of FGFR1 (arrow) using rabbit polyclonal FGFR1-p h. 293 cell lysates (2 µg/lane) either nontransfected (Lane 1) or transiently transfected with the FGFR1 gene (Lane 2).



Western Blotting

Image 2. Western blot analysis of anti-FGFR1 Antibody h in K562 cell line lysates (35 µg/lane).FGFR1 (arrow) was detected using the purified Pab.