



[Go to Product page](#)

Datasheet for ABIN391967  
**anti-FGFR2 antibody (N-Term)**

4 Images

Overview

Quantity:	400 µL
Target:	FGFR2
Binding Specificity:	AA 7-37, N-Term
Reactivity:	Human
Host:	Rabbit
Clonality:	Polyclonal
Conjugate:	This FGFR2 antibody is un-conjugated
Application:	Western Blotting (WB), Flow Cytometry (FACS), Immunofluorescence (IF)

Product Details

Immunogen:	This FGFR2 antibody is generated from rabbits immunized with a KLH conjugated synthetic peptide between 7-37 amino acids from the N-terminal region of human FGFR2.
Clone:	RB15689
Isotype:	Ig Fraction
Predicted Reactivity:	M
Purification:	This antibody is prepared by Saturated Ammonium Sulfate (SAS) precipitation followed by dialysis against PBS.

Target Details

Target:	FGFR2
---------	-------

## Target Details

---

Alternative Name: [FGFR2 \(FGFR2 Products\)](#)

---

Background: FGFR2 is a member of the fibroblast growth factor receptor family, where amino acid sequence is highly conserved between members and throughout evolution. FGFR family members differ from one another in their ligand affinities and tissue distribution. A full-length representative protein consists of an extracellular region, composed of three immunoglobulin-like domains, a single hydrophobic membrane-spanning segment and a cytoplasmic tyrosine kinase domain. The extracellular portion of the protein interacts with fibroblast growth factors, setting in motion a cascade of downstream signals, ultimately influencing mitogenesis and differentiation. This particular family member is a high-affinity receptor for acidic, basic and/or keratinocyte growth factor, depending on the isoform. Mutations in the gene for FGFR2 are associated with many craniosynostotic syndromes and bone malformations. The genomic organization of the gene encompasses 20 exons. Alternative splicing in multiple exons, including those encoding the Ig-like domains, the transmembrane region and the carboxyl terminus, results in varied isoforms which differ in structure and specificity. Isoform 1 has equal affinity for aFGF and bFGF but does not bind KGF.

---

Molecular Weight: 92025

---

Gene ID: 2263

---

NCBI Accession: [NP\\_000132](#), [NP\\_001138385](#), [NP\\_001138386](#), [NP\\_001138387](#), [NP\\_001138388](#), [NP\\_001138389](#), [NP\\_001138390](#), [NP\\_001138391](#), [NP\\_075259](#), [NP\\_075418](#)

---

UniProt: [P21802](#)

---

Pathways: [RTK Signaling](#), [Fc-epsilon Receptor Signaling Pathway](#), [EGFR Signaling Pathway](#), [Neurotrophin Signaling Pathway](#), [Regulation of Muscle Cell Differentiation](#), [Skeletal Muscle Fiber Development](#), [Growth Factor Binding](#)

---

## Application Details

---

Application Notes: IF: 1:10~50. WB: 1:1000. WB: 1:1000. FC: 1:10~50

---

Restrictions: For Research Use only

---

## Handling

---

Format: Liquid

---

Buffer: Purified polyclonal antibody supplied in PBS with 0.09 % (W/V) sodium azide.

---

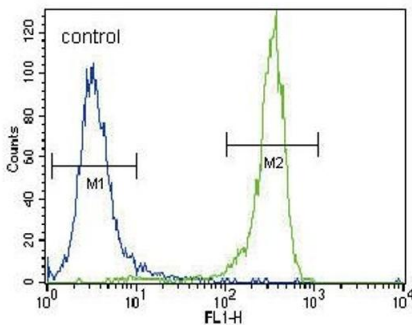
Preservative: Sodium azide

---

## Handling

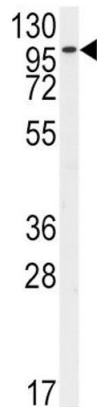
Precaution of Use:	This product contains Sodium azide: a POISONOUS AND HAZARDOUS SUBSTANCE which should be handled by trained staff only.
Storage:	4 °C,-20 °C
Storage Comment:	Maintain refrigerated at 2-8 °C for up to 6 months. For long term storage store at -20 °C in small aliquots to prevent freeze-thaw cycles.
Expiry Date:	6 months

## Images



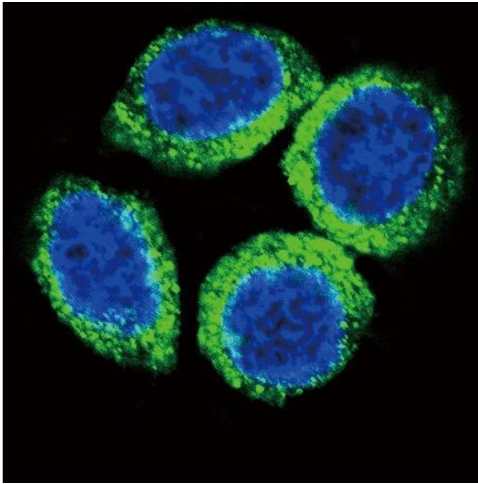
### Flow Cytometry

**Image 1.** FGFR2 Antibody (N-term R22) (ABIN391967 and ABIN2841763) flow cytometric analysis of NCI- cells (right histogram) compared to a negative control cell (left histogram). FITC-conjugated goat-anti-rabbit secondary antibodies were used for the analysis.



### Western Blotting

**Image 2.** Western blot analysis of anti-FGFR2 Antibody (N-term R22) (ABIN391967 and ABIN2841763) in HeLa cell line lysates (35 µg/lane). FGFR2 (arrow) was detected using the purified Pab.



### Immunofluorescence

**Image 3.** Confocal immunofluorescent analysis of FGFR2 Antibody (N-term R22) (ABIN391967 and ABIN2841763) with HeLa cells followed by Alexa Fluor 488-conjugated goat anti-rabbit IgG (green). DAPI was used to stain the cell nuclei (blue).

Please check the [product details page](#) for more images. Overall 4 images are available for ABIN391967.