

Datasheet for ABIN392011
anti-CPE antibody (C-Term)

2 Images

[Go to Product page](#)

Overview

Quantity:	400 µL
Target:	CPE
Binding Specificity:	AA 381-412, C-Term
Reactivity:	Human, Mouse
Host:	Rabbit
Clonality:	Polyclonal
Conjugate:	This CPE antibody is un-conjugated
Application:	Western Blotting (WB)

Product Details

Immunogen:	This CPE antibody is generated from rabbits immunized with a KLH conjugated synthetic peptide between 381-412 amino acids from the C-terminal region of human CPE.
Clone:	RB18869
Isotype:	Ig Fraction
Predicted Reactivity:	B, Pr
Purification:	This antibody is prepared by Saturated Ammonium Sulfate (SAS) precipitation followed by dialysis against PBS.

Target Details

Target:	CPE
---------	-----

Target Details

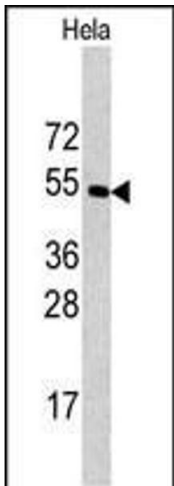
Alternative Name:	CPE (CPE Products)
Background:	CPE is a carboxypeptidase that cleaves C-terminal amino acid residues and is involved in the biosynthesis of peptide hormones and neurotransmitters, including insulin. It is a peripheral membrane protein. The protein specifically binds regulated secretory pathway proteins, including prohormones, but not constitutively secreted proteins. Mutations in CPE gene are implicated in type II diabetes.
Molecular Weight:	53151
Gene ID:	1363
NCBI Accession:	NP_001864
UniProt:	P16870
Pathways:	Peptide Hormone Metabolism, Synaptic Membrane

Application Details

Application Notes:	WB: 1:1000. WB: 1:1000
Restrictions:	For Research Use only

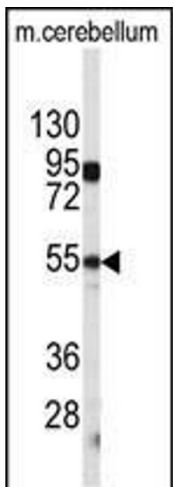
Handling

Format:	Liquid
Buffer:	Purified polyclonal antibody supplied in PBS with 0.09 % (W/V) sodium azide.
Preservative:	Sodium azide
Precaution of Use:	This product contains Sodium azide: a POISONOUS AND HAZARDOUS SUBSTANCE which should be handled by trained staff only.
Storage:	4 °C,-20 °C
Storage Comment:	Maintain refrigerated at 2-8 °C for up to 6 months. For long term storage store at -20 °C in small aliquots to prevent freeze-thaw cycles.
Expiry Date:	6 months



Western Blotting

Image 1. Western blot analysis of CPE antibody (C-term) (ABIN392011 and ABIN2841790) in HeLa cell line lysates (35 µg/lane). CPE (arrow) was detected using the purified Pab.



Western Blotting

Image 2. Western blot analysis of CPE antibody (C-term) (ABIN392011 and ABIN2841790) in mouse cerebellum tissue lysates (35 µg/lane). CPE (arrow) was detected using the purified Pab.