



[Go to Product page](#)

Datasheet for ABIN392021

anti-MUSK antibody

3 Images

Overview

Quantity:	400 µL
Target:	MUSK
Reactivity:	Human, Mouse
Host:	Rabbit
Clonality:	Polyclonal
Application:	Western Blotting (WB), Flow Cytometry (FACS), Immunofluorescence (IF)

Product Details

Immunogen:	This MUSK antibody is generated from rabbits immunized with human MUSK recombinant protein.
Clone:	RB14743
Isotype:	Ig Fraction
Purification:	This antibody is prepared by Saturated Ammonium Sulfate (SAS) precipitation followed by dialysis against PBS.

Target Details

Target:	MUSK
Alternative Name:	MUSK (MUSK Products)
Background:	MuSK activates signaling cascades responsible for many aspects of synapse formation, including the organization of the postsynaptic membrane, synapse-specific transcription, and presynaptic differentiation. MuSK also mediates agrin-induced aggregation of acetylcholine

Target Details

receptors at the mature vertebrate neuromuscular junction and also during synapse formation. It has been shown that a majority of AChR Ab-seronegative myasthenia gravis patients possess serum autoantibodies against MuSK.

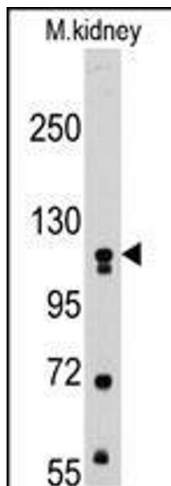
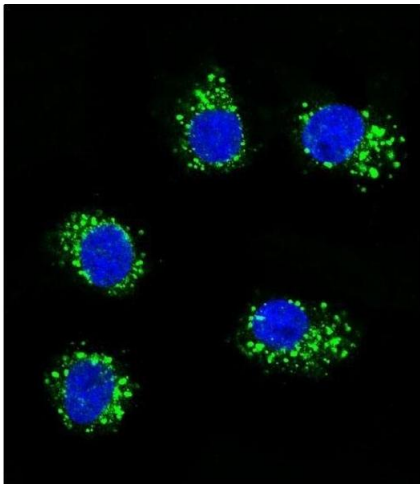
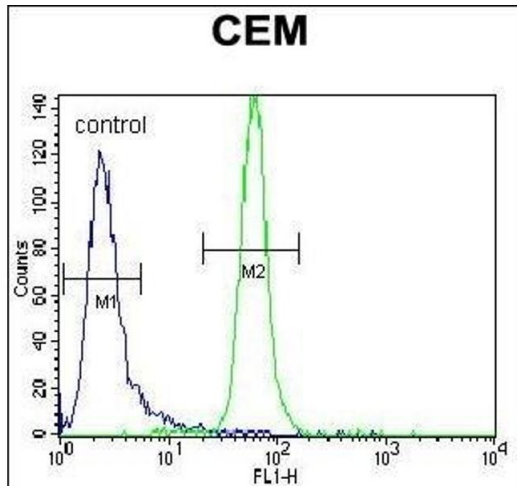
Molecular Weight:	97056
Gene ID:	4593
NCBI Accession:	NP_001159752 , NP_001159753 , NP_005583
UniProt:	O15146
Pathways:	RTK Signaling , Regulation of Muscle Cell Differentiation , Synaptic Membrane , Regulation of Cell Size , Skeletal Muscle Fiber Development

Application Details

Application Notes:	IF: 1:10~50. WB: 1:1000. FC: 1:10~50
Restrictions:	For Research Use only

Handling

Format:	Liquid
Buffer:	Purified polyclonal antibody supplied in PBS with 0.09 % (W/V) sodium azide.
Preservative:	Sodium azide
Precaution of Use:	This product contains Sodium azide: a POISONOUS AND HAZARDOUS SUBSTANCE which should be handled by trained staff only.
Storage:	4 °C,-20 °C
Storage Comment:	Maintain refrigerated at 2-8 °C for up to 6 months. For long term storage store at -20 °C in small aliquots to prevent freeze-thaw cycles.
Expiry Date:	6 months



Flow Cytometry

Image 1. MUSK Antibody (ABIN392021 and ABIN2841797) flow cytometric analysis of CEM cells (right histogram) compared to a negative control cell (left histogram). FITC-conjugated goat-anti-rabbit secondary antibodies were used for the analysis.

Immunofluorescence

Image 2. Confocal immunofluorescent analysis of MUSK Antibody (ABIN392021 and ABIN2841797) with MDA-M cell followed by Alexa Fluor 488-conjugated goat anti-rabbit IgG (green). DAPI was used to stain the cell nuclear (blue).

Western Blotting

Image 3. Western blot analysis of anti-MUSK Pab (ABIN392021 and ABIN2841797) in mouse kidney tissue lysates (35 µg/lane). MUSK (arrow) was detected using the purified Pab.