

Datasheet for ABIN392022

anti-PDGfra antibody (C-Term)



[Go to Product page](#)

4 Images

Overview

Quantity:	400 µL
Target:	PDGFRA
Binding Specificity:	AA 1048-1077, C-Term
Reactivity:	Human, Mouse
Host:	Rabbit
Clonality:	Polyclonal
Conjugate:	This PDGFRA antibody is un-conjugated
Application:	Western Blotting (WB), Immunohistochemistry (Paraffin-embedded Sections) (IHC (p)), Flow Cytometry (FACS)

Product Details

Immunogen:	This PDGFRA antibody is generated from rabbits immunized with a KLH conjugated synthetic peptide between 1048-1077 amino acids from the C-terminal region of human PDGFRA.
Clone:	RB2005-2006
Isotype:	Ig Fraction
Predicted Reactivity:	C, Rat
Purification:	This antibody is prepared by Saturated Ammonium Sulfate (SAS) precipitation followed by dialysis against PBS.

Target Details

Target:	PDGFRA
---------	--------

Target Details

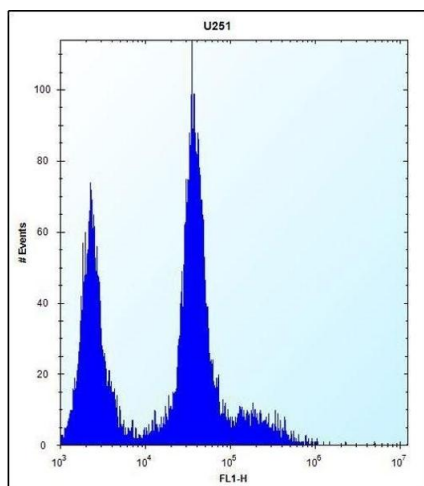
Alternative Name:	PDGFRA (PDGFRA Products)
Background:	PDGFRA is a cell surface tyrosine kinase receptor for members of the platelet-derived growth factor family. These growth factors are mitogens for cells of mesenchymal origin. The identity of the growth factor bound to a receptor monomer determines whether the functional receptor is a homodimer or a heterodimer, composed of both platelet-derived growth factor receptor alpha and beta polypeptides. Studies in knockout mice, where homozygosity is lethal, indicate that the alpha form of the platelet-derived growth factor receptor is particularly important for kidney development since mice heterozygous for the receptor exhibit defective kidney phenotypes.
Molecular Weight:	122670
Gene ID:	5156
NCBI Accession:	NP_006197
UniProt:	P16234
Pathways:	RTK Signaling , Fc-epsilon Receptor Signaling Pathway , EGFR Signaling Pathway , Neurotrophin Signaling Pathway , Platelet-derived growth Factor Receptor Signaling

Application Details

Application Notes:	WB: 1:1000. WB: 1:1000. IHC-P: 1:50~100. FC: 1:10~50
Restrictions:	For Research Use only

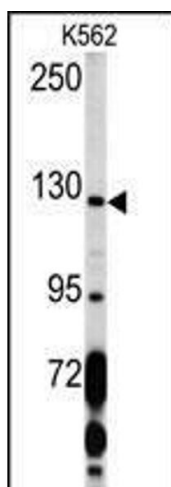
Handling

Format:	Liquid
Buffer:	Purified polyclonal antibody supplied in PBS with 0.09 % (W/V) sodium azide.
Preservative:	Sodium azide
Precaution of Use:	This product contains Sodium azide: a POISONOUS AND HAZARDOUS SUBSTANCE which should be handled by trained staff only.
Storage:	4 °C,-20 °C
Storage Comment:	Maintain refrigerated at 2-8 °C for up to 6 months. For long term storage store at -20 °C in small aliquots to prevent freeze-thaw cycles.
Expiry Date:	6 months



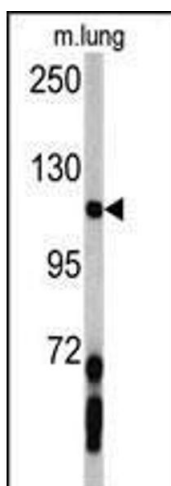
Flow Cytometry

Image 1. PDGFRA Antibody (C-term) (ABIN392022 and ABIN2841798) flow cytometric analysis of cells (right histogram) compared to a negative control cell (left histogram). FITC-conjugated goat-anti-rabbit secondary antibodies were used for the analysis.



Western Blotting

Image 2. Western blot analysis of PDGFRA Antibody (C-term) (ABIN392022 and ABIN2841798) in K562 cell line lysates (35 μ g/lane). PDGFRA (arrow) was detected using the purified Pab.



Western Blotting

Image 3. Western blot analysis of PDGFRA antibody (C-term) (ABIN392022 and ABIN2841798) in mouse lung tissue lysates (35 μ g/lane). PDGFRA (arrow) was detected using the purified Pab.

Please check the [product details page](#) for more images. Overall 4 images are available for ABIN392022.