

Datasheet for ABIN392037
anti-PDGFR antibody (C-Term)[Go to Product page](#)

4 Images

Overview

Quantity:	400 µL
Target:	PDGFR
Binding Specificity:	AA 328-357, C-Term
Reactivity:	Human
Host:	Rabbit
Clonality:	Polyclonal
Application:	Western Blotting (WB), Immunohistochemistry (Paraffin-embedded Sections) (IHC (p))

Product Details

Immunogen:	This PDGFR antibody is generated from rabbits immunized with a KLH conjugated synthetic peptide between 328-357 amino acids from the C-terminal region of human PDGFR.
Clone:	RB2001
Isotype:	Ig Fraction
Purification:	This antibody is prepared by Saturated Ammonium Sulfate (SAS) precipitation followed by dialysis against PBS.

Target Details

Target:	PDGFR
Alternative Name:	PDGFR (PDGFR Products)
Background:	PDGFR bears significant sequence similarity to the ligand binding domain of platelet-derived growth factor receptor beta. Mutations in the PDGFR gene, or deletion of a chromosomal

Target Details

segment containing this gene, are associated with sporadic hepatocellular carcinomas, colorectal cancers, and non-small cell lung cancers. This suggests PDGFRL may function as a tumor suppressor.

Molecular Weight: 41861

Gene ID: 5157

NCBI Accession: [NP_006198](#)

UniProt: [Q15198](#)

Pathways: [Platelet-derived growth Factor Receptor Signaling](#)

Application Details

Application Notes: WB: 1:1000. WB: 1:1000. IHC-P: 1:50~100. IHC-P: 1:50~100

Restrictions: For Research Use only

Handling

Format: Liquid

Buffer: Purified polyclonal antibody supplied in PBS with 0.09 % (W/V) sodium azide.

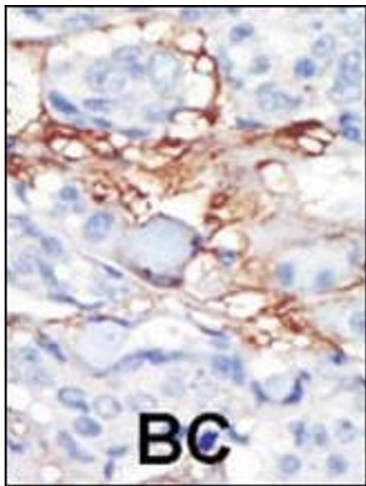
Preservative: Sodium azide

Precaution of Use: This product contains Sodium azide: a POISONOUS AND HAZARDOUS SUBSTANCE which should be handled by trained staff only.

Storage: 4 °C,-20 °C

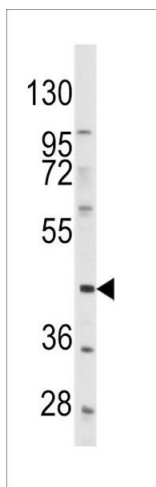
Storage Comment: Maintain refrigerated at 2-8 °C for up to 6 months. For long term storage store at -20 °C in small aliquots to prevent freeze-thaw cycles.

Expiry Date: 6 months



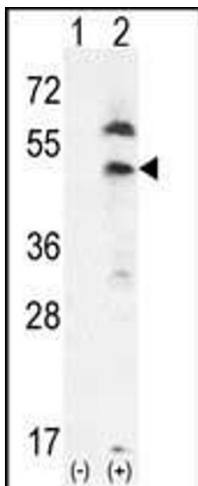
Immunohistochemistry (Paraffin-embedded Sections)

Image 1. Formalin-fixed and paraffin-embedded human cancer tissue reacted with the primary antibody, which was peroxidase-conjugated to the secondary antibody, followed by DAB staining. This data demonstrates the use of this antibody for immunohistochemistry, clinical relevance has not been evaluated. BC = breast carcinoma, HC = hepatocarcinoma.



Western Blotting

Image 2. Western blot analysis of anti-PDGFRL Antibody (C-term) (ABIN392037 and ABIN2841805) in HeLa cell line lysates (35 µg/lane). PDGFRL (arrow) was detected using the purified Pab.



Western Blotting

Image 3. Western blot analysis of PDGFRL (arrow) using rabbit polyclonal PDGFRL- (ABIN392037 and ABIN2841805). 293 cell lysates (2 µg/lane) either nontransfected (Lane 1) or transiently transfected (Lane 2) with the PDGFRL gene.

Please check the [product details page](#) for more images. Overall 4 images are available for ABIN392037.