

Datasheet for ABIN392040

anti-Ret Proto-Oncogene antibody (N-Term)**2** Images[Go to Product page](#)

Overview

Quantity:	400 µL
Target:	Ret Proto-Oncogene (RET)
Binding Specificity:	AA 13-44, N-Term
Reactivity:	Human
Host:	Rabbit
Clonality:	Polyclonal
Application:	Western Blotting (WB), Flow Cytometry (FACS)

Product Details

Immunogen:	This RET antibody is generated from rabbits immunized with a KLH conjugated synthetic peptide between 13-44 amino acids from the N-terminal region of human RET.
Clone:	RB01516
Isotype:	Ig Fraction
Purification:	This antibody is prepared by Saturated Ammonium Sulfate (SAS) precipitation followed by dialysis against PBS.

Target Details

Target:	Ret Proto-Oncogene (RET)
Alternative Name:	RET (RET Products)
Background:	RET, a member of the cadherin superfamily, is one of the receptor tyrosine kinases, which are cell-surface molecules that transduce signals for cell growth and differentiation. This protein

Target Details

plays a crucial role in neural crest development, and the gene can undergo oncogenic activation in vivo and in vitro by cytogenetic rearrangement. Mutations i are associated with the disorders multiple endocrine neoplasia, type IIA, multiple endocrine neoplasia, type IIB, Hirschsprung disease, and medullary thyroid carcinoma.

Molecular Weight: 124319

Gene ID: 5979

NCBI Accession: [NP_065681](#), [NP_066124](#)

UniProt: [P07949](#)

Pathways: [RTK Signaling](#), [Dopaminergic Neurogenesis](#), [Regulation of Cell Size](#), [Tube Formation](#)

Application Details

Application Notes: WB: 1:1000. FC: 1:10~50

Restrictions: For Research Use only

Handling

Format: Liquid

Buffer: Purified polyclonal antibody supplied in PBS with 0.09 % (W/V) sodium azide.

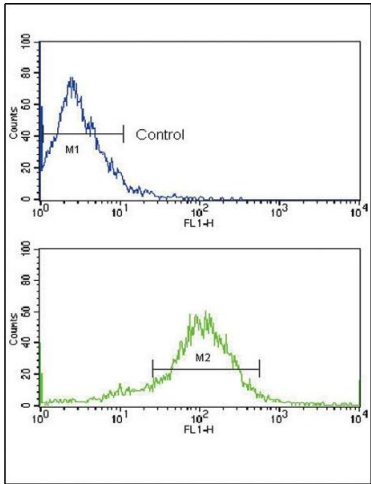
Preservative: Sodium azide

Precaution of Use: This product contains Sodium azide: a POISONOUS AND HAZARDOUS SUBSTANCE which should be handled by trained staff only.

Storage: 4 °C,-20 °C

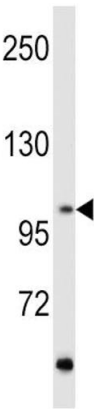
Storage Comment: Maintain refrigerated at 2-8 °C for up to 6 months. For long term storage store at -20 °C in small aliquots to prevent freeze-thaw cycles.

Expiry Date: 6 months



Flow Cytometry

Image 1. Flow cytometric analysis of MCF-7 cells using RET Antibody (N-term Q28) (bottom histogram) compared to a negative control (top histogram). FITC-conjugated goat-anti-rabbit secondary antibodies were used for the analysis.



Western Blotting

Image 2. Western blot analysis of hRET-G28 (ABIN392040 and ABIN2841808) in MCF7 cell line lysates (35 µg/lane). RET (arrow) was detected using the purified Pab.