

Datasheet for ABIN392041

anti-Ret Proto-Oncogene antibody (C-Term)**2** Images**1** Publication[Go to Product page](#)

Overview

Quantity:	400 µL
Target:	Ret Proto-Oncogene (RET)
Binding Specificity:	AA 1012-1042, C-Term
Reactivity:	Human
Host:	Rabbit
Clonality:	Polyclonal
Application:	Western Blotting (WB), Immunohistochemistry (Paraffin-embedded Sections) (IHC (p))

Product Details

Immunogen:	This RET antibody is generated from rabbits immunized with a KLH conjugated synthetic peptide between 1012-1042 amino acids from the C-terminal region of human RET.
Clone:	RB01561
Isotype:	Ig Fraction
Purification:	This antibody is prepared by Saturated Ammonium Sulfate (SAS) precipitation followed by dialysis against PBS.

Target Details

Target:	Ret Proto-Oncogene (RET)
Alternative Name:	RET (RET Products)
Background:	RET, a member of the cadherin superfamily, is one of the receptor tyrosine kinases, which are cell-surface molecules that transduce signals for cell growth and differentiation. This protein

Target Details

plays a crucial role in neural crest development, and the gene can undergo oncogenic activation in vivo and in vitro by cytogenetic rearrangement. Mutations are associated with the disorders multiple endocrine neoplasia, type IIA, multiple endocrine neoplasia, type IIB, Hirschsprung disease, and medullary thyroid carcinoma.

Molecular Weight: 124319

Gene ID: 5979

NCBI Accession: [NP_065681](#), [NP_066124](#)

UniProt: [P07949](#)

Pathways: [RTK Signaling](#), [Dopaminergic Neurogenesis](#), [Regulation of Cell Size](#), [Tube Formation](#)

Application Details

Application Notes: WB: 1:1000. IHC-P: 1:50~100

Restrictions: For Research Use only

Handling

Format: Liquid

Buffer: Purified polyclonal antibody supplied in PBS with 0.09 % (W/V) sodium azide.

Preservative: Sodium azide

Precaution of Use: This product contains Sodium azide: a POISONOUS AND HAZARDOUS SUBSTANCE which should be handled by trained staff only.

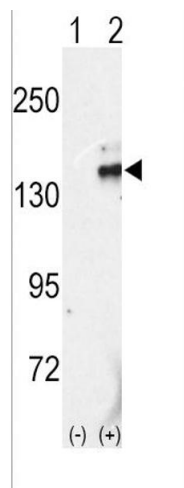
Storage: 4 °C,-20 °C

Storage Comment: Maintain refrigerated at 2-8 °C for up to 6 months. For long term storage store at -20 °C in small aliquots to prevent freeze-thaw cycles.

Expiry Date: 6 months

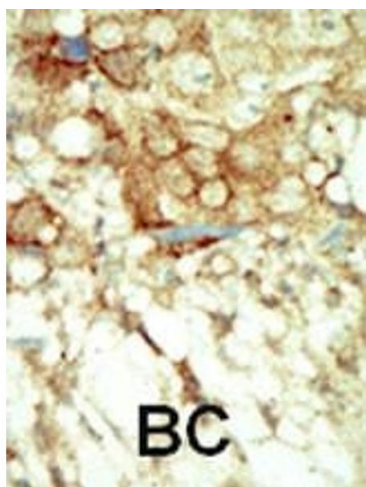
Publications

Product cited in: Wibowo, Chuan, Seth, Cordoba, Lua, Middelberg: "Co-administration of non-carrier nanoparticles boosts antigen immune response without requiring protein conjugation." in: **Vaccine**, Vol. 32, Issue 29, pp. 3664-9, (2014) ([PubMed](#)).



Western Blotting

Image 1. Western blot analysis of RET (arrow) using rabbit polyclonal RET Antibody (C-term) (ABIN392041 and ABIN2841809). 293 cell lysates (2 µg/lane) either nontransfected (Lane 1) or transiently transfected with the RET gene (Lane 2) (Origene Technologies).



Immunohistochemistry (Paraffin-embedded Sections)

Image 2. Formalin-fixed and paraffin-embedded human cancer tissue reacted with the primary antibody, which was peroxidase-conjugated to the secondary antibody, followed by DAB staining. This data demonstrates the use of this antibody for immunohistochemistry, clinical relevance has not been evaluated. BC = breast carcinoma, HC = hepatocarcinoma.