



[Go to Product page](#)

Datasheet for ABIN392070
anti-DOK1 antibody (N-Term)

3 Images

Overview

Quantity:	400 µL
Target:	DOK1
Binding Specificity:	AA 9-39, N-Term
Reactivity:	Human
Host:	Rabbit
Clonality:	Polyclonal
Conjugate:	This DOK1 antibody is un-conjugated
Application:	Western Blotting (WB), Immunohistochemistry (Paraffin-embedded Sections) (IHC (p))

Product Details

Immunogen:	This DOK1 antibody is generated from rabbits immunized with a KLH conjugated synthetic peptide between 9-39 amino acids from the N-terminal region of human DOK1.
Clone:	RB1759-RB1760
Isotype:	Ig Fraction
Predicted Reactivity:	B, M, Rat
Purification:	This antibody is prepared by Saturated Ammonium Sulfate (SAS) precipitation followed by dialysis against PBS.

Target Details

Target:	DOK1
---------	------

Target Details

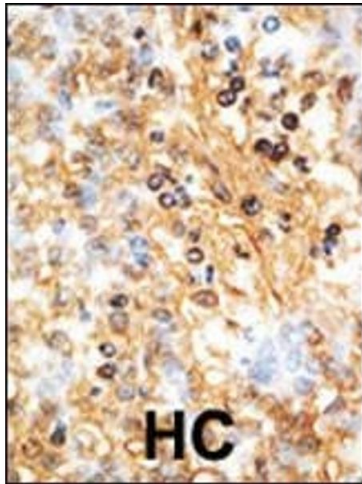
Alternative Name:	DOK1 (DOK1 Products)
Background:	DOK1 is constitutively tyrosine phosphorylated in hematopoietic progenitors isolated from chronic myelogenous leukemia (CML) patients in the chronic phase. It may be a critical substrate for p210(bcr/abl), a chimeric protein whose presence is associated with CML. DOK1 contains a putative pleckstrin homology domain at the amino terminus and ten PXXP SH3 recognition motifs. DOK2 binds p120 (RasGAP) from CML cells. It has been postulated to play a role in mitogenic signaling.
Molecular Weight:	52392
Gene ID:	1796
NCBI Accession:	NP_001184189 , NP_001372
UniProt:	Q99704

Application Details

Application Notes:	WB: 1:1000. WB: 1:1000. IHC-P: 1:50~100
Restrictions:	For Research Use only

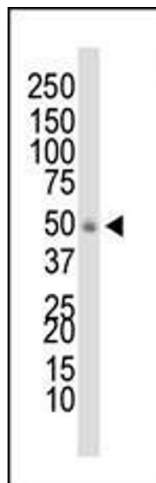
Handling

Format:	Liquid
Buffer:	Purified polyclonal antibody supplied in PBS with 0.09 % (W/V) sodium azide.
Preservative:	Sodium azide
Precaution of Use:	This product contains Sodium azide: a POISONOUS AND HAZARDOUS SUBSTANCE which should be handled by trained staff only.
Storage:	4 °C,-20 °C
Storage Comment:	Maintain refrigerated at 2-8 °C for up to 6 months. For long term storage store at -20 °C in small aliquots to prevent freeze-thaw cycles.
Expiry Date:	6 months



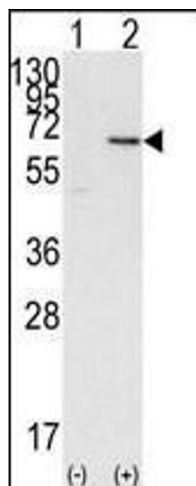
Immunohistochemistry (Paraffin-embedded Sections)

Image 1. Formalin-fixed and paraffin-embedded human cancer tissue reacted with the primary antibody, which was peroxidase-conjugated to the secondary antibody, followed by AEC staining. This data demonstrates the use of this antibody for immunohistochemistry, clinical relevance has not been evaluated. BC = breast carcinoma, HC = hepatocarcinoma.



Western Blotting

Image 2. Western blot analysis of anti-DOK1 Pab (ABIN392070 and ABIN2841833) in HL-60 cell lysate. DOK1 (Arrow) was detected using purified Pab. Secondary HRP-anti-rabbit was used for signal visualization with chemiluminescence.



Western Blotting

Image 3. Western blot analysis of DOK1 (arrow) using DOK1 Antibody (N-term) (ABIN392070 and ABIN2841833). 293 cell lysates (2 µg/lane) either nontransfected (Lane 1) or transiently transfected with the DOK1 gene (Lane 2).