

Datasheet for ABIN392087
anti-BLK antibody (N-Term)



[Go to Product page](#)

4 Images

Overview

Quantity:	400 µL
Target:	BLK
Binding Specificity:	AA 1-30, N-Term
Reactivity:	Human, Mouse
Host:	Rabbit
Clonality:	Polyclonal
Conjugate:	This BLK antibody is un-conjugated
Application:	Western Blotting (WB), Immunohistochemistry (Paraffin-embedded Sections) (IHC (p))

Product Details

Immunogen:	This BLK antibody is generated from rabbits immunized with a KLH conjugated synthetic peptide between 1-30 amino acids from the N-terminal region of human BLK.
Clone:	RB03107
Isotype:	Ig Fraction
Purification:	This antibody is purified through a protein A column, followed by peptide affinity purification.

Target Details

Target:	BLK
Alternative Name:	BLK (BLK Products)
Background:	Protein kinases are enzymes that transfer a phosphate group from a phosphate donor,

Target Details

generally the γ phosphate of ATP, onto an acceptor amino acid in a substrate protein. By this basic mechanism, protein kinases mediate most of the signal transduction in eukaryotic cells, regulating cellular metabolism, transcription, cell cycle progression, cytoskeletal rearrangement and cell movement, apoptosis, and differentiation. With more than 500 gene products, the protein kinase family is one of the largest families of proteins in eukaryotes. The family has been classified in 8 major groups based on sequence comparison of their tyrosine (PTK) or serine/threonine (STK) kinase catalytic domains. The STE group (homologs of yeast Sterile 7, 11, 20 kinases) consists of 50 kinases related to the mitogen-activated protein kinase (MAPK) cascade families (Ste7/MAP2K, Ste11/MAP3K, and Ste20/MAP4K). MAP kinase cascades, consisting of a MAPK and one or more upstream regulatory kinases (MAPKKs) have been best characterized in the yeast pheromone response pathway. Pheromones bind to Ste cell surface receptors and activate yeast MAPK pathway.

Molecular Weight:	57706
Gene ID:	640
NCBI Accession:	NP_001706
UniProt:	P51451
Pathways:	Positive Regulation of Peptide Hormone Secretion , CXCR4-mediated Signaling Events , Thromboxane A2 Receptor Signaling

Application Details

Application Notes:	WB: 1:1000. WB: 1:1000. WB: 1:1000. IHC-P: 1:50~100
Restrictions:	For Research Use only

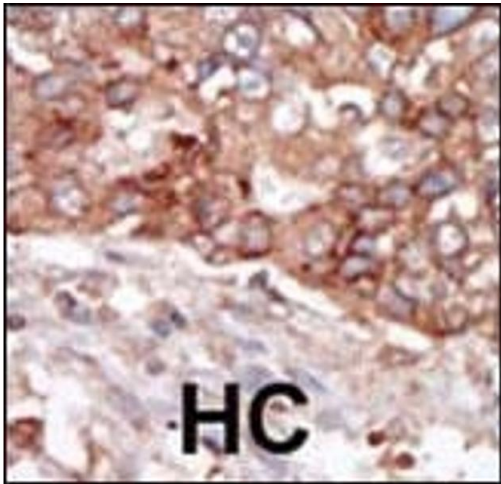
Handling

Format:	Liquid
Buffer:	Purified polyclonal antibody supplied in PBS with 0.09 % (W/V) sodium azide.
Preservative:	Sodium azide
Precaution of Use:	This product contains Sodium azide: a POISONOUS AND HAZARDOUS SUBSTANCE which should be handled by trained staff only.
Storage:	4 °C,-20 °C
Storage Comment:	Maintain refrigerated at 2-8 °C for up to 6 months. For long term storage store at -20 °C in small

aliquots to prevent freeze-thaw cycles.

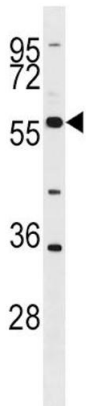
Expiry Date: 6 months

Images



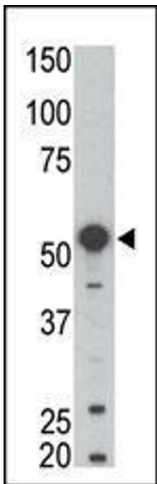
Immunohistochemistry (Paraffin-embedded Sections)

Image 1. Formalin-fixed and paraffin-embedded human cancer tissue reacted with the primary antibody, which was peroxidase-conjugated to the secondary antibody, followed by AEC staining. This data demonstrates the use of this antibody for immunohistochemistry, clinical relevance has not been evaluated. BC = breast carcinoma, HC = hepatocarcinoma.



Western Blotting

Image 2. BLK Antibody (G1) (ABIN392087 and ABIN2841844) western blot analysis in HL-60 cell line lysates (35 µg/lane). This demonstrates the BLK antibody detected the BLK protein (arrow).



Western Blotting

Image 3. Western blot analysis of anti-BLK Pab (ABIN392087 and ABIN2841844) in mouse kidney tissue lysate. BLK (arrow) was detected using purified Pab. Secondary HRP-anti-rabbit was used for signal visualization with chemiluminescence.

Please check the [product details page](#) for more images. Overall 4 images are available for ABIN392087.