

Datasheet for ABIN392088

anti-BMX antibody (AA 212-242)[Go to Product page](#)**2** Images

Overview

Quantity:	400 µL
Target:	BMX
Binding Specificity:	AA 212-242
Reactivity:	Human, Mouse
Host:	Rabbit
Clonality:	Polyclonal
Conjugate:	This BMX antibody is un-conjugated
Application:	Western Blotting (WB), Immunohistochemistry (Paraffin-embedded Sections) (IHC (p))

Product Details

Immunogen:	This BMX antibody is generated from rabbits immunized with a KLH conjugated synthetic peptide between 212-242 amino acids from the Central region of human BMX.
Clone:	RB03116
Isotype:	Ig Fraction
Purification:	This antibody is prepared by Saturated Ammonium Sulfate (SAS) precipitation followed by dialysis against PBS.

Target Details

Target:	BMX
Alternative Name:	BMX (BMX Products)

Target Details

Background: Tyrosine kinases are either receptor molecules, which contain transmembrane and extracellular domains, or nonreceptor proteins, which are located intracellularly. One family of nonreceptor TKs includes the genes TEC (MIM 600583), TXK (MIM 600058), ITK (MIM 186973), and BTK (MIM 300300). All of these proteins are homologs of the Drosophila Src28 TK and contain an SH3 and SH2 domain upstream of the TK domain.[supplied by OMIM]

Molecular Weight: 78011

Gene ID: 660

NCBI Accession: [NP_001712](#), [NP_975010](#)

UniProt: [P51813](#)

Application Details

Application Notes: WB: 1:1000. IHC-P: 1:50~100

Restrictions: For Research Use only

Handling

Format: Liquid

Buffer: Purified polyclonal antibody supplied in PBS with 0.09 % (W/V) sodium azide.

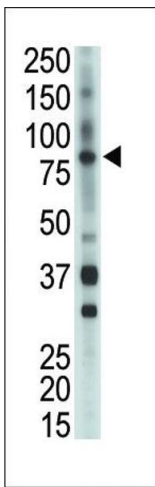
Preservative: Sodium azide

Precaution of Use: This product contains Sodium azide: a POISONOUS AND HAZARDOUS SUBSTANCE which should be handled by trained staff only.

Storage: 4 °C,-20 °C

Storage Comment: Maintain refrigerated at 2-8 °C for up to 6 months. For long term storage store at -20 °C in small aliquots to prevent freeze-thaw cycles.

Expiry Date: 6 months



Immunohistochemistry (Paraffin-embedded Sections)

Image 1. Formalin-fixed and paraffin-embedded human cancer tissue reacted with the primary antibody, which was peroxidase-conjugated to the secondary antibody, followed by AEC staining. This data demonstrates the use of this antibody for immunohistochemistry, clinical relevance has not been evaluated. BC = breast carcinoma, HC = hepatocarcinoma.

Western Blotting

Image 2. The anti-BMX Pab (ABIN392088 and ABIN2841845) is used in Western blot to detect BMX in mouse heart tissue lysate.