

Datasheet for ABIN392089

anti-BTK antibody (AA 209-239)**3** Images[Go to Product page](#)

Overview

Quantity:	400 µL
Target:	BTK
Binding Specificity:	AA 209-239
Reactivity:	Human
Host:	Rabbit
Clonality:	Polyclonal
Conjugate:	This BTK antibody is un-conjugated
Application:	Western Blotting (WB), Immunofluorescence (IF), Immunohistochemistry (Paraffin-embedded Sections) (IHC (p))

Product Details

Immunogen:	This BTK antibody is generated from rabbits immunized with a KLH conjugated synthetic peptide between 209-239 amino acids from the Central region of human BTK.
Clone:	RB03117
Isotype:	Ig Fraction
Purification:	This antibody is prepared by Saturated Ammonium Sulfate (SAS) precipitation followed by dialysis against PBS.

Target Details

Target:	BTK
Alternative Name:	BTK (BTK Products)

Target Details

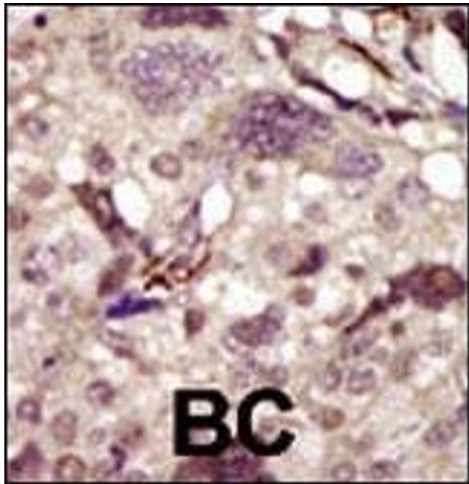
Background:	BTK plays a crucial role in B-cell ontogeny. This protein transiently phosphorylates GTF2I on tyrosine residues in response to B-cell receptor cross-linking. Defects in BTK are the cause of X-linked agammaglobulinemia type 1 (XLA). XLA is a humoral immunodeficiency disease which results in developmental defects in the maturation pathway of B-cells. Affected boys have normal levels of pre-B-cells in their bone marrow but virtually no circulating mature B-lymphocytes. This results in a lack of immunoglobulins of all classes and leads to recurrent bacterial infections like otitis, conjunctivitis, dermatitis, sinusitis or fatal sepsis or meningitis within the first years of life.
Molecular Weight:	76281
Gene ID:	695
NCBI Accession:	NP_000052
UniProt:	Q06187
Pathways:	Fc-epsilon Receptor Signaling Pathway , Hormone Transport , Activation of Innate immune Response , Regulation of Leukocyte Mediated Immunity , Production of Molecular Mediator of Immune Response , Toll-Like Receptors Cascades , BCR Signaling

Application Details

Application Notes:	IF: 1:10~50. WB: 1:1000. IHC-P: 1:50~100
Restrictions:	For Research Use only

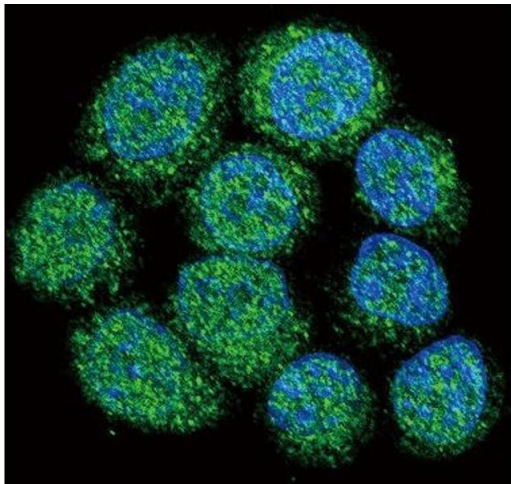
Handling

Format:	Liquid
Buffer:	Purified polyclonal antibody supplied in PBS with 0.09 % (W/V) sodium azide.
Preservative:	Sodium azide
Precaution of Use:	This product contains Sodium azide: a POISONOUS AND HAZARDOUS SUBSTANCE which should be handled by trained staff only.
Storage:	4 °C,-20 °C
Storage Comment:	Maintain refrigerated at 2-8 °C for up to 6 months. For long term storage store at -20 °C in small aliquots to prevent freeze-thaw cycles.
Expiry Date:	6 months



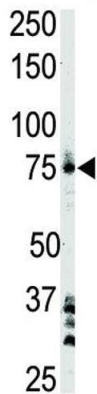
Immunohistochemistry (Paraffin-embedded Sections)

Image 1. Formalin-fixed and paraffin-embedded human cancer tissue reacted with the primary antibody, which was peroxidase-conjugated to the secondary antibody, followed by DAB staining. This data demonstrates the use of this antibody for immunohistochemistry, clinical relevance has not been evaluated. BC = breast carcinoma, HC = hepatocarcinoma.



Immunofluorescence

Image 2. Confocal immunofluorescent analysis of BTK Antibody (Center) (ABIN392089 and ABIN2841846) with 293 cell followed by Alexa Fluor 488-conjugated goat anti-rabbit IgG (green). DAPI was used to stain the cell nuclear (blue).



Western Blotting

Image 3. The anti-BTK Pab (ABIN392089 and ABIN2841846) is used in Western blot to detect BTK in Ramos cell lysate.