



[Go to Product page](#)

Datasheet for ABIN392094  
**anti-FER antibody (C-Term)**

4 Images

Overview

Quantity:	400 µL
Target:	FER
Binding Specificity:	AA 782-811, C-Term
Reactivity:	Human
Host:	Rabbit
Clonality:	Polyclonal
Conjugate:	This FER antibody is un-conjugated
Application:	Western Blotting (WB), Immunofluorescence (IF), Immunohistochemistry (Paraffin-embedded Sections) (IHC (p)), Flow Cytometry (FACS)

Product Details

Immunogen:	This FER antibody is generated from rabbits immunized with a KLH conjugated synthetic peptide between 782-811 amino acids from the C-terminal region of human FER.
Clone:	RB03222
Isotype:	Ig Fraction
Purification:	This antibody is prepared by Saturated Ammonium Sulfate (SAS) precipitation followed by dialysis against PBS.

Target Details

Target:	FER
Alternative Name:	FER ( <a href="#">FER Products</a> )

## Target Details

---

Background:	FER is a member of the FPS/FES family of nontransmembrane receptor tyrosine kinases. It regulates cell-cell adhesion and mediates signaling from the cell surface to the cytoskeleton via growth factor receptors.
Molecular Weight:	94638
Gene ID:	2241
NCBI Accession:	<a href="#">NP_005237</a>
UniProt:	<a href="#">P16591</a>

## Application Details

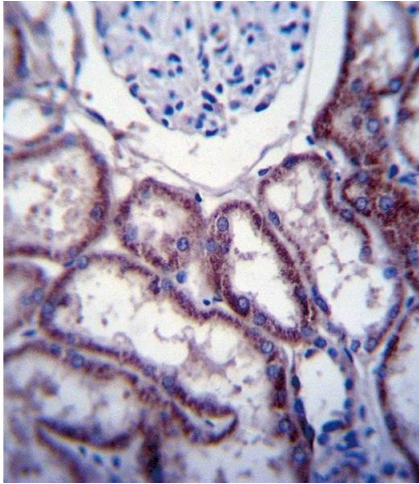
---

Application Notes:	IF: 1:10~50. WB: 1:1000. IHC-P: 1:10~50. FC: 1:10~50
Restrictions:	For Research Use only

## Handling

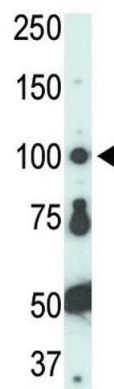
---

Format:	Liquid
Buffer:	Purified polyclonal antibody supplied in PBS with 0.09 % (W/V) sodium azide.
Preservative:	Sodium azide
Precaution of Use:	This product contains Sodium azide: a POISONOUS AND HAZARDOUS SUBSTANCE which should be handled by trained staff only.
Storage:	4 °C, -20 °C
Storage Comment:	Maintain refrigerated at 2-8 °C for up to 6 months. For long term storage store at -20 °C in small aliquots to prevent freeze-thaw cycles.
Expiry Date:	6 months



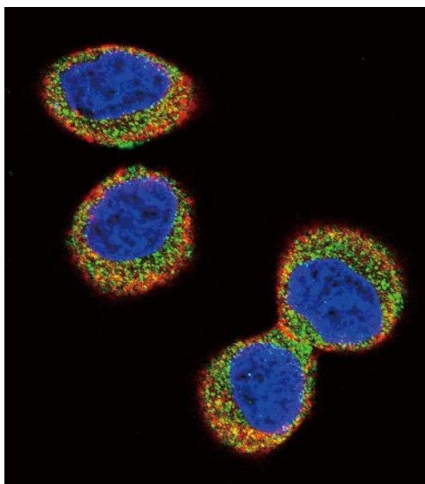
### Immunohistochemistry (Paraffin-embedded Sections)

**Image 1.** FER Antibody (C-term) (ABIN392094 and ABIN2841847) immunohistochemistry analysis in formalin fixed and paraffin embedded human kidney tissue followed by peroxidase conjugation of the secondary antibody and DAB staining. This data demonstrates the use of FER Antibody (C-term) for immunohistochemistry. Clinical relevance has not been evaluated.



### Western Blotting

**Image 2.** The anti-FER Pab (ABIN392094 and ABIN2841847) is used in Western blot to detect FER in HL-60 cell lysate.



### Immunofluorescence

**Image 3.** Confocal immunofluorescent analysis of FER Antibody (C-term) (ABIN392094 and ABIN2841847) with HeLa cell followed by Alexa Fluor 488-conjugated goat anti-rabbit IgG (green). Actin filaments have been labeled with Alexa Fluor 555 phalloidin (red). DAPI was used to stain the cell nuclear (blue).

Please check the [product details page](#) for more images. Overall 4 images are available for ABIN392094.