



Datasheet for ABIN392101
anti-LCK antibody (N-Term)



[Go to Product page](#)

4 Images

Overview

Quantity:	400 µL
Target:	LCK
Binding Specificity:	AA 23-52, N-Term
Reactivity:	Human, Mouse
Host:	Rabbit
Clonality:	Polyclonal
Application:	Western Blotting (WB), Immunofluorescence (IF), Flow Cytometry (FACS), Immunohistochemistry (Paraffin-embedded Sections) (IHC (p))

Product Details

Immunogen:	This LCK antibody is generated from rabbits immunized with a KLH conjugated synthetic peptide between 23-52 amino acids from the N-terminal region of human LCK.
Clone:	RB3088
Isotype:	Ig Fraction
Purification:	This antibody is purified through a protein A column, followed by peptide affinity purification.

Target Details

Target:	LCK
Alternative Name:	LCK (LSK) (LCK Products)
Background:	LSK, which belongs to the SRC subfamily of Tyr protein kinases, may participate in antigen-induced T-cell activation. It binds to phosphatidylinositol 3'-kinase (PI3K) from T lymphocytes

Target Details

through its SH3 domain and to the tyrosine phosphorylated form of KHDRBS1/p70 through its SH2 domain. LSK is bound to the cytoplasmic domain of either CD4 or CD8. This protein is involved in leukemias by a chromosomal translocation t(1,7)(p34,q34) which involves LCK and T-cell receptor beta chain (TCRB) genes.

Molecular Weight: 58001

Gene ID: 3932

NCBI Accession: [NP_001036236](#), [NP_005347](#)

UniProt: [P06239](#)

Pathways: [TCR Signaling](#), [Fc-epsilon Receptor Signaling Pathway](#), [EGFR Signaling Pathway](#), [Neurotrophin Signaling Pathway](#), [Transition Metal Ion Homeostasis](#), [Positive Regulation of Endopeptidase Activity](#), [CXCR4-mediated Signaling Events](#), [Thromboxane A2 Receptor Signaling](#)

Application Details

Application Notes: IF: 1:10~50. WB: 1:1000. IHC-P: 1:50~100. FC: 1:10~50

Restrictions: For Research Use only

Handling

Format: Liquid

Buffer: Purified polyclonal antibody supplied in PBS with 0.09 % (W/V) sodium azide.

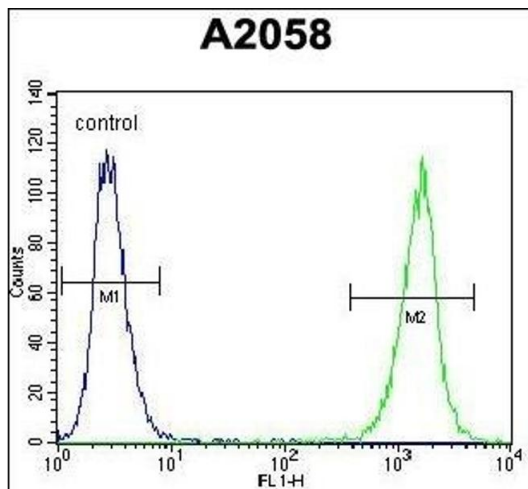
Preservative: Sodium azide

Precaution of Use: This product contains Sodium azide: a POISONOUS AND HAZARDOUS SUBSTANCE which should be handled by trained staff only.

Storage: 4 °C,-20 °C

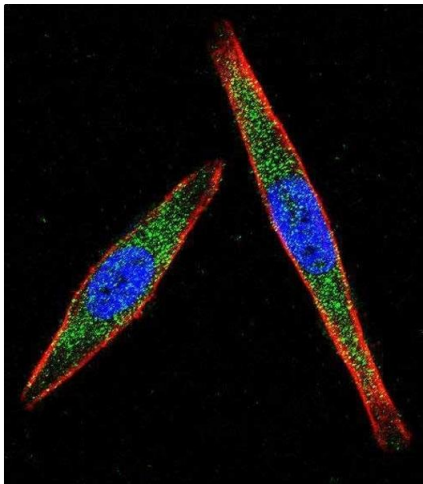
Storage Comment: Maintain refrigerated at 2-8 °C for up to 6 months. For long term storage store at -20 °C in small aliquots to prevent freeze-thaw cycles.

Expiry Date: 6 months



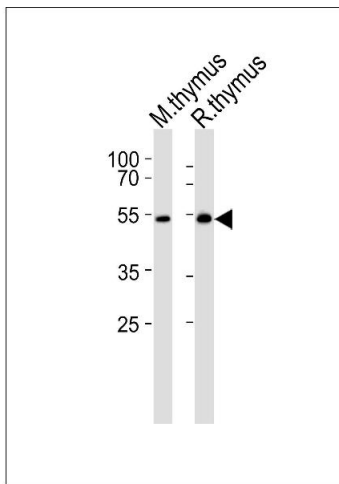
Flow Cytometry

Image 1. LCK Antibody (N-term) (ABIN392101 and ABIN2841855) flow cytometric analysis of cells (right histogram) compared to a negative control cell (left histogram). FITC-conjugated goat-anti-rabbit secondary antibodies were used for the analysis.



Immunofluorescence

Image 2. Confocal immunofluorescent analysis of LCK Antibody (N-term) (ABIN392101 and ABIN2841855) with cell followed by Alexa Fluor 488-conjugated goat anti-rabbit IgG (green). Actin filaments have been labeled with Alexa Fluor 555 phalloidin (red). DAPI was used to stain the cell nuclear (blue).



Western Blotting

Image 3. Western blot analysis of lysates from mouse thymus and rat thymus tissue lysate (from left to right), using LSK Antibody (I37) (ABIN392101 and ABIN2841855). (ABIN392101 and ABIN2841855) was diluted at 1:1000 at each lane. A goat anti-rabbit IgG H&L(HRP) at 1:5000 dilution was used as the secondary antibody. Lysates at 35 µg per lane.

Please check the [product details page](#) for more images. Overall 4 images are available for ABIN392101.