

Datasheet for ABIN392102
anti-LYN antibody (N-Term)

4 Images

[Go to Product page](#)

Overview

Quantity:	400 µL
Target:	LYN
Binding Specificity:	AA 32-62, N-Term
Reactivity:	Human
Host:	Rabbit
Clonality:	Polyclonal
Application:	Western Blotting (WB), Immunohistochemistry (Paraffin-embedded Sections) (IHC (p)), Flow Cytometry (FACS)

Product Details

Immunogen:	This LYN antibody is generated from rabbits immunized with a KLH conjugated synthetic peptide between 32-62 amino acids from the N-terminal region of human LYN.
Clone:	RB03080
Isotype:	Ig Fraction
Purification:	This antibody is prepared by Saturated Ammonium Sulfate (SAS) precipitation followed by dialysis against PBS.

Target Details

Target:	LYN
Alternative Name:	LYN (LYN Products)
Background:	Lyn is a protein tyrosine kinase which is important in cellular signaling. It contains an SH2 and

Target Details

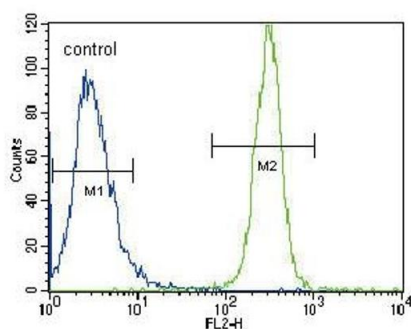
	SH3 domain and has been found to be cleaved after activation of caspases in apoptosis.
Molecular Weight:	58574
Gene ID:	4067
NCBI Accession:	NP_001104567 , NP_002341
UniProt:	P07948
Pathways:	Fc-epsilon Receptor Signaling Pathway , Hormone Transport , Response to Growth Hormone Stimulus , Cellular Response to Molecule of Bacterial Origin , Regulation of Leukocyte Mediated Immunity , Positive Regulation of Immune Effector Process , CXCR4-mediated Signaling Events , Thromboxane A2 Receptor Signaling , Integrin Complex , BCR Signaling

Application Details

Application Notes:	WB: 1:1000. WB: 1:1000. IHC-P: 1:50~100. FC: 1:10~50
Restrictions:	For Research Use only

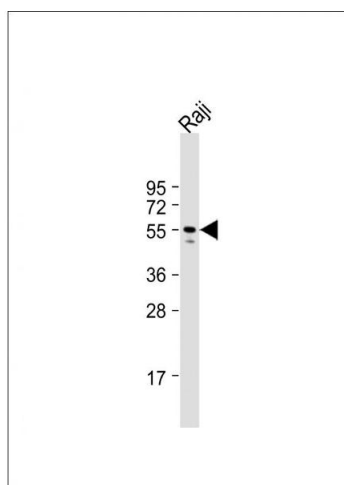
Handling

Format:	Liquid
Buffer:	Purified polyclonal antibody supplied in PBS with 0.09 % (W/V) sodium azide.
Preservative:	Sodium azide
Precaution of Use:	This product contains Sodium azide: a POISONOUS AND HAZARDOUS SUBSTANCE which should be handled by trained staff only.
Storage:	4 °C,-20 °C
Storage Comment:	Maintain refrigerated at 2-8 °C for up to 6 months. For long term storage store at -20 °C in small aliquots to prevent freeze-thaw cycles.
Expiry Date:	6 months



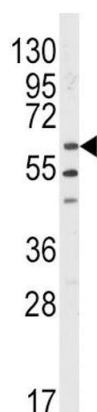
Flow Cytometry

Image 1. LYN Antibody (N-term) (ABIN392102 and ABIN2841856) flow cytometric analysis of Hela cells (right histogram) compared to a negative control (left histogram). FITC-conjugated goat-anti-rabbit secondary antibodies were used for the analysis.



Western Blotting

Image 2. Anti-LYN Antibody (E46) at 1:1000 dilution + Raji whole cell lysate. Lysates/proteins at 20 µg per lane. Secondary Goat Anti-Rabbit IgG, (H+L), Peroxidase conjugated at 1/10000 dilution. Predicted band size : 59 kDa. Blocking/Dilution buffer: 5 % NFDM/TBST.



Western Blotting

Image 3. Western blot analysis of anti-LYN Antibody (N-term) (ABIN392102 and ABIN2841856) in HL60 cell line lysates (35 µg/lane). LYN (arrow) was detected using the purified Pab.

Please check the [product details page](#) for more images. Overall 4 images are available for ABIN392102.