

Datasheet for ABIN392120
anti-STK38L antibody (C-Term)



[Go to Product page](#)

2 Images

Overview

Quantity:	400 µL
Target:	STK38L
Binding Specificity:	AA 408-437, C-Term
Reactivity:	Human
Host:	Rabbit
Clonality:	Polyclonal
Application:	Western Blotting (WB)

Product Details

Immunogen:	This STK38L antibody is generated from rabbits immunized with a KLH conjugated synthetic peptide between 408-437 amino acids from the C-terminal region of human STK38L.
Clone:	RB9195
Isotype:	Ig Fraction
Predicted Reactivity:	M
Purification:	This antibody is prepared by Saturated Ammonium Sulfate (SAS) precipitation followed by dialysis against PBS.

Target Details

Target:	STK38L
Alternative Name:	STK38L (STK38L Products)

Target Details

Background: STK38L contains 12 protein kinase catalytic subdomains and a potential bipartite nuclear localization signal. Northern blot analysis revealed expression of a 3.9-kb transcript in all tissues tested, with the possible exception of adult brain. Highest expression was in peripheral blood leukocytes. Immunoblot and immunofluorescence microscopy demonstrated predominantly nuclear expression of a 55-kD protein.

Molecular Weight: 54003

Gene ID: 23012

NCBI Accession: [NP_055815](#)

UniProt: [Q9Y2H1](#)

Application Details

Application Notes: WB: 1:1000. WB: 1:1000

Restrictions: For Research Use only

Handling

Format: Liquid

Buffer: Purified polyclonal antibody supplied in PBS with 0.09 % (W/V) sodium azide.

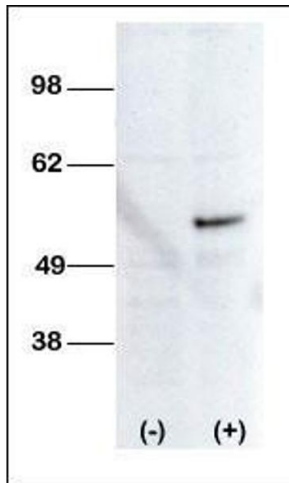
Preservative: Sodium azide

Precaution of Use: This product contains Sodium azide: a POISONOUS AND HAZARDOUS SUBSTANCE which should be handled by trained staff only.

Storage: 4 °C,-20 °C

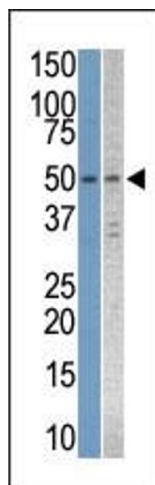
Storage Comment: Maintain refrigerated at 2-8 °C for up to 6 months. For long term storage store at -20 °C in small aliquots to prevent freeze-thaw cycles.

Expiry Date: 6 months



Western Blotting

Image 1. Western blot analysis of anti-STK38L Pab (ABIN392120 and ABIN2841867) transiently transfected HEK-293 cell line lysate (1 µg/lane). STK38L pab (arrow) was detected using the purified Pab



Western Blotting

Image 2. The anti-STK38L Pab (ABIN392120 and ABIN2841867) is used in Western blot to detect STK38L in Jurkat and T47D cell line lysates.