

Datasheet for ABIN392121

anti-STYK1 antibody (N-Term)**2** Images[Go to Product page](#)

Overview

Quantity:	400 µL
Target:	STYK1
Binding Specificity:	AA 31-64, N-Term
Reactivity:	Human, Mouse
Host:	Rabbit
Clonality:	Polyclonal
Conjugate:	This STYK1 antibody is un-conjugated
Application:	Western Blotting (WB)

Product Details

Immunogen:	This STYK1 antibody is generated from rabbits immunized with a KLH conjugated synthetic peptide between 31-64 amino acids from the N-terminal region of human STYK1.
Clone:	RB9197
Isotype:	Ig Fraction
Purification:	This antibody is prepared by Saturated Ammonium Sulfate (SAS) precipitation followed by dialysis against PBS.

Target Details

Target:	STYK1
Alternative Name:	STYK1 (STYK1 Products)

Target Details

Background: STYK1, a probable tyrosine protein-kinase, which has strong transforming capabilities on a variety of cell lines. When overexpressed, it can also induce tumor cell invasion as well as metastasis in distant organs. May act by activating both MAP kinase and phosphatidylinositol 3'-kinases (PI3K) pathways. It is widely expressed, highly expressed in brain, placenta and prostate. STYK1 is expressed in tumor cells such as hepatoma cells LO2, cervix carcinoma cells HeLa, ovary cancer cells Ho8910 and chronic myelogenous leukemia cells K562, but not in other tumor cells such as epidermoid carcinoma.

Molecular Weight: 47577

Gene ID: 55359

NCBI Accession: [NP_060893](#)

UniProt: [Q6J9G0](#)

Application Details

Application Notes: WB: 1:1000. WB: 1:1000

Restrictions: For Research Use only

Handling

Format: Liquid

Buffer: Purified polyclonal antibody supplied in PBS with 0.09 % (W/V) sodium azide.

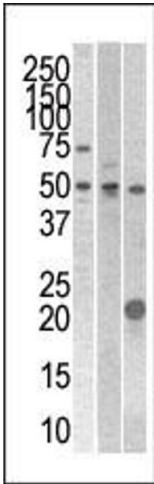
Preservative: Sodium azide

Precaution of Use: This product contains Sodium azide: a POISONOUS AND HAZARDOUS SUBSTANCE which should be handled by trained staff only.

Storage: 4 °C,-20 °C

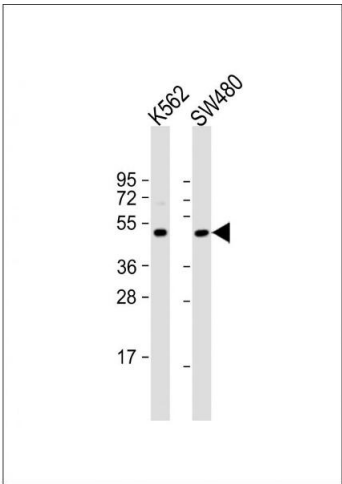
Storage Comment: Maintain refrigerated at 2-8 °C for up to 6 months. For long term storage store at -20 °C in small aliquots to prevent freeze-thaw cycles.

Expiry Date: 6 months



Western Blotting

Image 1. The anti- STYK1 Pab (ABIN392121 and ABIN2837982) is used in Western blot to detect STYK1 in 293 , CEM (center), and mouse kidney cell line/tissue lysates.



Western Blotting

Image 2. All lanes : Anti-STYK1 Antibody (N-term) at 1:1000 dilution Lane 1: K562 whole cell lysate Lane 2: S whole cell lysate Lysates/proteins at 20 µg per lane. Secondary Goat Anti-Rabbit IgG, (H+L), Peroxidase conjugated at 1/10000 dilution. Predicted band size : 48 kDa Blocking/Dilution buffer: 5 % NFDM/TBST.