

Datasheet for ABIN392141  
**anti-PDX1 antibody (C-Term)**

## 2 Images

[Go to Product page](#)

## Overview

Quantity:	400 µL
Target:	PDX1
Binding Specificity:	AA 186-215, C-Term
Reactivity:	Human
Host:	Rabbit
Clonality:	Polyclonal
Conjugate:	This PDX1 antibody is un-conjugated
Application:	Western Blotting (WB), Immunofluorescence (IF)

## Product Details

Immunogen:	This IPF antibody is generated from rabbits immunized with a KLH conjugated synthetic peptide between 186-215 amino acids from the C-terminal region of human IPF.
Clone:	RB10579
Isotype:	Ig Fraction
Purification:	This antibody is prepared by Saturated Ammonium Sulfate (SAS) precipitation followed by dialysis against PBS.

## Target Details

Target:	PDX1
Alternative Name:	IPF ( <a href="#">PDX1 Products</a> )

## Target Details

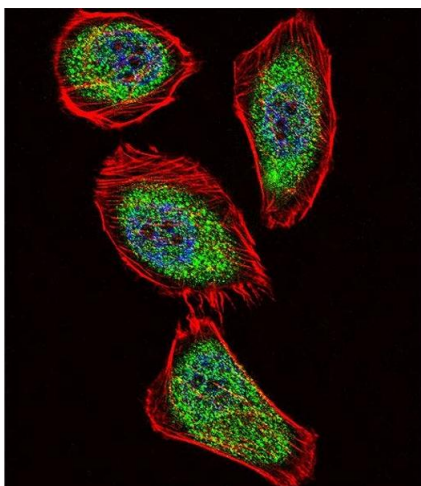
Background:	IPF is a transcriptional activator of several genes, including insulin, somatostatin, glucokinase, islet amyloid polypeptide, and glucose transporter type 2. This nuclear protein is involved in the early development of the pancreas and plays a major role in glucose-dependent regulation of insulin gene expression. Defects in this gene are a cause of pancreatic agenesis, which can lead to early-onset insulin-dependent diabetes mellitus (NIDDM), as well as maturity onset diabetes of the young type 4 (MODY4).
Molecular Weight:	30771
Gene ID:	3651
NCBI Accession:	<a href="#">NP_000200</a>
UniProt:	<a href="#">P52945</a>
Pathways:	<a href="#">Nuclear Receptor Transcription Pathway</a> , <a href="#">Positive Regulation of Peptide Hormone Secretion</a> , <a href="#">Steroid Hormone Mediated Signaling Pathway</a> , <a href="#">Hormone Transport</a> , <a href="#">Carbohydrate Homeostasis</a> , <a href="#">Chromatin Binding</a> , <a href="#">Maintenance of Protein Location</a>

## Application Details

Application Notes:	IF: 1:10~50. WB: 1:1000
Restrictions:	For Research Use only

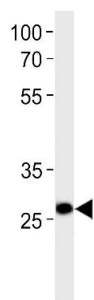
## Handling

Format:	Liquid
Buffer:	Purified polyclonal antibody supplied in PBS with 0.09 % (W/V) sodium azide.
Preservative:	Sodium azide
Precaution of Use:	This product contains Sodium azide: a POISONOUS AND HAZARDOUS SUBSTANCE which should be handled by trained staff only.
Storage:	4 °C, -20 °C
Storage Comment:	Maintain refrigerated at 2-8 °C for up to 6 months. For long term storage store at -20 °C in small aliquots to prevent freeze-thaw cycles.
Expiry Date:	6 months



### Immunofluorescence

**Image 1.** Fluorescent confocal image of cell stained with IPF Antibody (C-term) (ABIN392141 and ABIN2841873). cells were fixed with 4 % PFA (20 min), permeabilized with Triton X-100 (0.1 %, 10 min), then incubated with IPF primary antibody (1:25, 1 h at 37 °C). For secondary antibody, Alexa Fluor® 488 conjugated donkey anti-rabbit antibody (green) was used (1:400, 50 min at 37 °C). Cytoplasmic actin was counterstained with Alexa Fluor® 555 (red) conjugated Phalloidin (7 units/mL, 1 h at 37 °C). Nuclei were counterstained with DAPI (blue) (10 µg/mL, 10 min). IPF immunoreactivity is localized to Cytoplasm and Nucleus significantly.



### Western Blotting

**Image 2.** Ipf Antibody (C-term) (ABIN392141 and ABIN2841873) western blot analysis in U-937 cell line lysates (35 µg/lane). This demonstrates the Ipf antibody detected the Ipf protein (arrow).