

Datasheet for ABIN392151
anti-PRKRA antibody (AA 225-252)

3 Images

[Go to Product page](#)

Overview

Quantity:	400 µL
Target:	PRKRA
Binding Specificity:	AA 225-252
Reactivity:	Human
Host:	Rabbit
Clonality:	Polyclonal
Application:	Western Blotting (WB), Immunohistochemistry (Paraffin-embedded Sections) (IHC (p)), Flow Cytometry (FACS)

Product Details

Immunogen:	This PRKRA antibody is generated from rabbits immunized with a KLH conjugated synthetic peptide between 225-252 amino acids from human PRKRA.
Clone:	RB16261
Isotype:	Ig Fraction
Predicted Reactivity:	B, Rat
Purification:	This antibody is purified through a protein A column, followed by peptide affinity purification.

Target Details

Target:	PRKRA
Alternative Name:	PRKRA (PRKRA Products)

Target Details

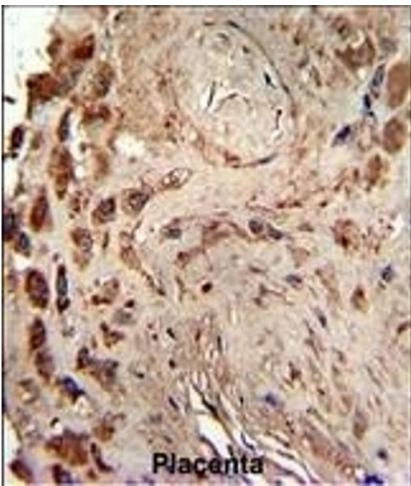
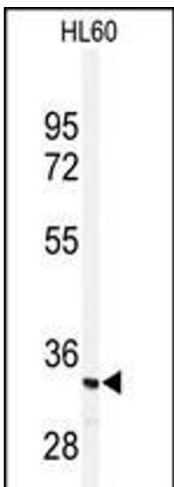
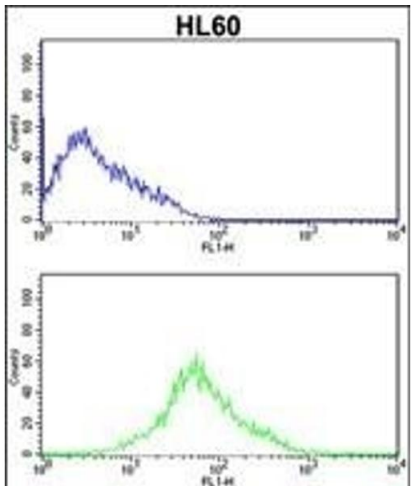
Background:	PRKRA appears to have a pro-apoptotic function that may be suppressed in the presence of growth factor. It activates EIF2AK2 in the absence of double-stranded RNA (dsRNA).
Molecular Weight:	34404
Gene ID:	8575
NCBI Accession:	NP_001132989 , NP_001132990 , NP_003681
UniProt:	O75569
Pathways:	Regulatory RNA Pathways

Application Details

Application Notes:	WB: 1:1000. IHC-P: 1:50~100. FC: 1:10~50
Restrictions:	For Research Use only

Handling

Format:	Liquid
Buffer:	Purified polyclonal antibody supplied in PBS with 0.09 % (W/V) sodium azide.
Preservative:	Sodium azide
Precaution of Use:	This product contains Sodium azide: a POISONOUS AND HAZARDOUS SUBSTANCE which should be handled by trained staff only.
Storage:	4 °C, -20 °C
Storage Comment:	Maintain refrigerated at 2-8 °C for up to 6 months. For long term storage store at -20 °C in small aliquots to prevent freeze-thaw cycles.
Expiry Date:	6 months



Flow Cytometry

Image 1. PRKRA Antibody (ABIN392151 and ABIN2841876) flow cytometric analysis of HL60 cells (bottom histogram) compared to a negative control cell (top histogram). FITC-conjugated goat-anti-rabbit secondary antibodies were used for the analysis.

Western Blotting

Image 2. Western blot analysis of anti-PRKRA Antibody (ABIN392151 and ABIN2841876) in HL60 cell line lysates (35 µg/lane). PRKRA (arrow) was detected using the purified Pab.

Immunohistochemistry (Paraffin-embedded Sections)

Image 3. Formalin-fixed and paraffin-embedded human placenta reacted with PRKRA Antibody, which was peroxidase-conjugated to the secondary antibody, followed by DAB staining. This data demonstrates the use of this antibody for immunohistochemistry, clinical relevance has not been evaluated.