

Datasheet for ABIN392154
anti-ANTXR1 antibody (AA 358-386)



[Go to Product page](#)

2 Images

Overview

Quantity:	400 µL
Target:	ANTXR1
Binding Specificity:	AA 358-386
Reactivity:	Human
Host:	Rabbit
Clonality:	Polyclonal
Application:	Western Blotting (WB), Immunohistochemistry (Paraffin-embedded Sections) (IHC (p))

Product Details

Immunogen:	This ANTXR1 antibody is generated from rabbits immunized with a KLH conjugated synthetic peptide between 358-386 amino acids from human ANTXR1.
Clone:	RB15324
Isotype:	Ig Fraction
Predicted Reactivity:	M, Rat
Purification:	This antibody is purified through a protein A column, followed by peptide affinity purification.

Target Details

Target:	ANTXR1
Alternative Name:	ANTXR1 (ANTXR1 Products)
Background:	ANTXR1 is a type I transmembrane protein and is a tumor-specific endothelial marker that has

Target Details

been implicated in colorectal cancer. This protein has been shown to also be a docking protein or receptor for Bacillus anthracis toxin, the causative agent of the disease, anthrax. The binding of the protective antigen (PA) component, of the tripartite anthrax toxin, to this receptor protein mediates delivery of toxin components to the cytosol of cells. Once inside the cell, the other two components of anthrax toxin, edema factor (EF) and lethal factor (LF) disrupt normal cellular processes.

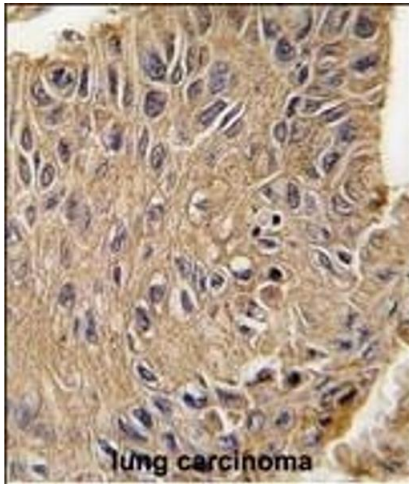
Molecular Weight:	62789
Gene ID:	84168
NCBI Accession:	NP_060623 , NP_115584 , NP_444262
UniProt:	Q9H6X2

Application Details

Application Notes:	WB: 1:1000. IHC-P: 1:10~50
Restrictions:	For Research Use only

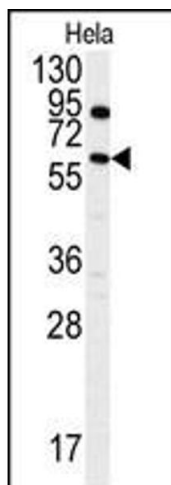
Handling

Format:	Liquid
Buffer:	Purified polyclonal antibody supplied in PBS with 0.09 % (W/V) sodium azide.
Preservative:	Sodium azide
Precaution of Use:	This product contains Sodium azide: a POISONOUS AND HAZARDOUS SUBSTANCE which should be handled by trained staff only.
Storage:	4 °C, -20 °C
Storage Comment:	Maintain refrigerated at 2-8 °C for up to 6 months. For long term storage store at -20 °C in small aliquots to prevent freeze-thaw cycles.
Expiry Date:	6 months



Immunohistochemistry (Paraffin-embedded Sections)

Image 1. Formalin-fixed and paraffin-embedded human lung carcinoma tissue reacted with ANTXR1 Antibody (ABIN392154 and ABIN2841879), which was peroxidase-conjugated to the secondary antibody, followed by DAB staining. This data demonstrates the use of this antibody for immunohistochemistry, clinical relevance has not been evaluated.



Western Blotting

Image 2. Western blot analysis of anti-ANTXR1 Antibody (ABIN392154 and ABIN2841879) in HeLa cell line lysates (35 µg/lane). ANTXR1 (arrow) was detected using the purified Pab.