

Datasheet for ABIN392159

anti-KLF10/TIEG1 antibody (N-Term)**3** Images[Go to Product page](#)

Overview

Quantity:	400 µL
Target:	KLF10/TIEG1 (KLF10)
Binding Specificity:	AA 13-40, N-Term
Reactivity:	Human
Host:	Rabbit
Clonality:	Polyclonal
Conjugate:	This KLF10/TIEG1 antibody is un-conjugated
Application:	Western Blotting (WB), Immunohistochemistry (Paraffin-embedded Sections) (IHC (p))

Product Details

Immunogen:	This TIEG antibody is generated from rabbits immunized with a KLH conjugated synthetic peptide between 13-40 amino acids from the N-terminal region of human TIEG.
Clone:	RB14876
Isotype:	Ig Fraction
Purification:	This antibody is purified through a protein A column, followed by peptide affinity purification.

Target Details

Target:	KLF10/TIEG1 (KLF10)
Alternative Name:	TIEG (KLF10 Products)
Background:	TIEG is a transcriptional repressor involved in the regulation of cell growth. TIEG binds to the

Target Details

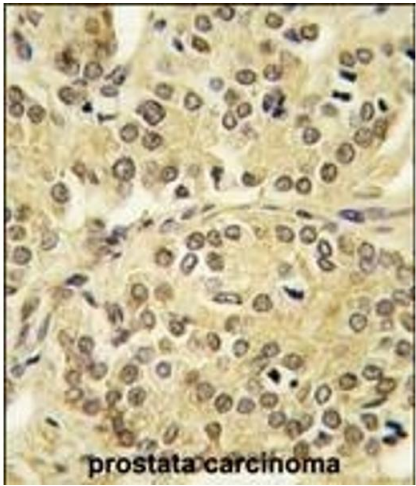
	consensus sequence 5'-GGTGTG-3'and inhibits cell growth.
Molecular Weight:	52555
Gene ID:	7071
NCBI Accession:	NP_001027453 , NP_005646
UniProt:	Q13118
Pathways:	Stem Cell Maintenance

Application Details

Application Notes:	WB: 1:2000. WB: 1:1000. IHC-P: 1:10~50
Restrictions:	For Research Use only

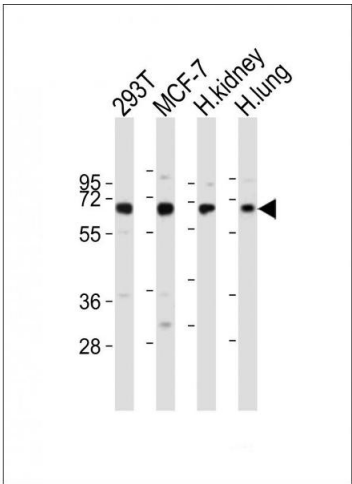
Handling

Format:	Liquid
Buffer:	Purified polyclonal antibody supplied in PBS with 0.09 % (W/V) sodium azide.
Preservative:	Sodium azide
Precaution of Use:	This product contains Sodium azide: a POISONOUS AND HAZARDOUS SUBSTANCE which should be handled by trained staff only.
Storage:	4 °C,-20 °C
Storage Comment:	Maintain refrigerated at 2-8 °C for up to 6 months. For long term storage store at -20 °C in small aliquots to prevent freeze-thaw cycles.
Expiry Date:	6 months



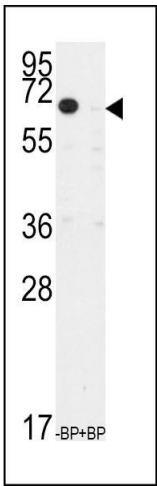
Immunohistochemistry (Paraffin-embedded Sections)

Image 1. Formalin-fixed and paraffin-embedded human prostata carcinoma tissue reacted with TIEG antibody (N-term) (ABIN392159 and ABIN2841880) , which was peroxidase-conjugated to the secondary antibody, followed by DAB staining. This data demonstrates the use of this antibody for immunohistochemistry, clinical relevance has not been evaluated.



Western Blotting

Image 2. All lanes : Anti-TIEG Antibody (N-term) at 1:2000 dilution Lane 1: 293T whole cell lysates Lane 2: MCF-7 whole cell lysates Lane 3: human kidney lysates Lane 4: human lung lysates Lysates/proteins at 20 µg per lane. Secondary Goat Anti-Rabbit IgG, (H+L), Peroxidase conjugated at 1/10000 dilution Predicted band size : 53 kDa Blocking/Dilution buffer: 5 % NFDM/TBST.



Western Blotting

Image 3. Western blot analysis of anti-TIEG Antibody (N-term) (ABIN392159 and ABIN2841880) pre-incubated with and without blocking peptide in CEM cell line lysate. TIEG(N-term)(arrow) was detected using the purified Pab.